

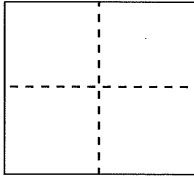
CORNER RECORD

Document Number CR 5425

City of Oakland

County of Alameda, California

Brief Legal Description Pin monument opposite # 6133 Ascot Dr.



CORNER TYPE

Government Corner ☐ Control ☐
Meander ☐ Property ☐
Rancho ☐ Other ☒

Date of Survey 2/06/2012.

COORDINATES (Optional)

N. _____
E. _____
Zone _____ NAD27 ☐ NAD83 ☐
NAD83 Epoch _____
Elev. _____
Vert. Datum: NGVD29 ☐ NAVD88 ☐
Meas. Units: Metric ☐ Imperial ☐

Corner - Left as found ☒ Found and tagged ☐ Established ☐ Reestablished ☐ Rebuilt ☐

Identification and type of corner found: Evidence used to identify or procedure used to establish or reestablish the corner:

City of Oakland pin mounment in standard casting.

See pg 2 for drawing

In compliance with section 8771 of the PLS Act, this corner record is being filed PRIOR to PG & E's underground installations on Ascot Dr.

A description of the physical condition of the monument as found and as set or reset:

The monument was found in good condition.

Ref: City of Oakland Mon Tie Bk 22 pg 23

SURVEYOR'S STATEMENT

This Corner Record was prepared by me or under my direction in conformance with the Professional Land Surveyor's Act on 19. July 2013

Signed [Signature] P.L.S. or R.C.E. No. 4700



COUNTY SURVEYOR'S STATEMENT

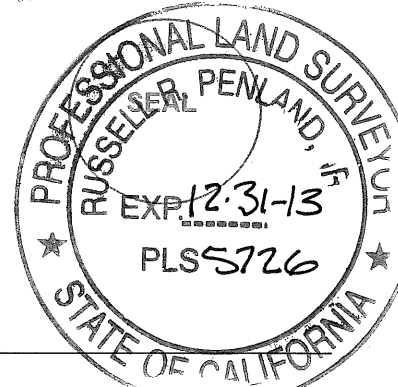
This Corner Record was received

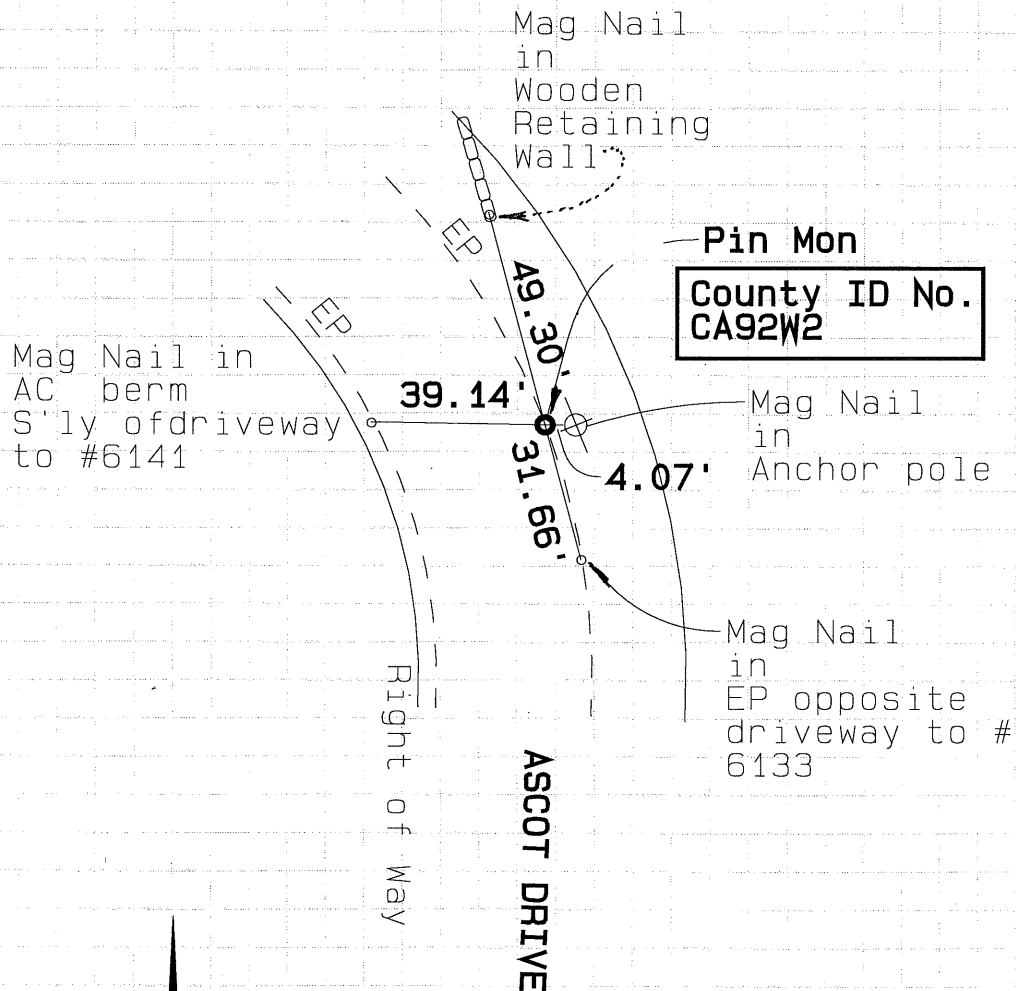
and examined and filed 85-13

Signed [Signature] P.L.S. or R.C.E. No. 5726

Title COUNTY SURVEYOR

County Surveyor's Comment: _____





EP = Edge of Pavement

AC = Asphalt