

CORNER RECORD

Agency Index

BOOK 106 PAGE 93

Document Number

CR 11021

City of OAKLAND

County of

ALAMEDA

, California

Brief Legal Description

CITY OF OAKLAND MONUMENT AS SHOWN UPON MONUMENT MAP 1509B470_136 AND MELROSE ACRES (6-MAPS-46) IN MORCOM PLACE 150' ± NORTHEASTERLY OF MORCOM AVENUE.

CORNER TYPE**COORDINATES (Optional)**RANCHO
SAN
ANTONIO
(AM PERALTA)Government Corner ☐

Control



Elevation

Meander ☐

Property



Units

Metric ☐U.S. Survey Foot ☒Rancho ☐

Other



Horizontal Datum

CCS 83

Zone 3

Epoch Date

Date of Survey 2/9/2018

Vertical Datum

☐ Complies with Public Resources Code §§8801-8819☐ Complies with Public Resources Code §§8890-8902

PLS Act Ref:



8765(d)



8771



8773



Other:

Corner/
Monument:

Left as found



Established



Rebuilt



Pre-Construction



Found and tagged



Reestablished



Referenced



Post-Construction

Narrative of corner identified and monument as found, set, reset, replaced, or removed:

☒ See sheet #2 for description(s):

FOUND MONUMENT THAT COULD BE DAMAGED OR DESTROYED BY A PROPOSED GAS LINE CONSTRUCTION PROJECT. MONUMENT WAS REFERENCED AS SHOWN ON PAGE 2 OF 2.

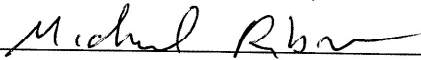
THE PURPOSE OF THIS CORNER RECORD IS TO PRESERVE THE LOCATION OF THE MONUMENT PRIOR TO CONSTRUCTION. NO ATTEMPT WAS MADE TO DETERMINE THE RELATIONSHIP BETWEEN THE MONUMENT AND PROPERTY LINES, RIGHT-OF-WAY LINES, CENTERLINES OR OTHER MONUMENTS.

SURVEYOR'S STATEMENTThis Corner Record was prepared by me or under my direction in conformance with the Professional Land Surveyors' Act on MARCH 27, 2018

Signed

P.L.S. or P.C.E. No. 8911**COUNTY SURVEYOR'S STATEMENT**This Corner Record was received 14 FEBRUARY 2018and examined and filed 24 APRIL 2018

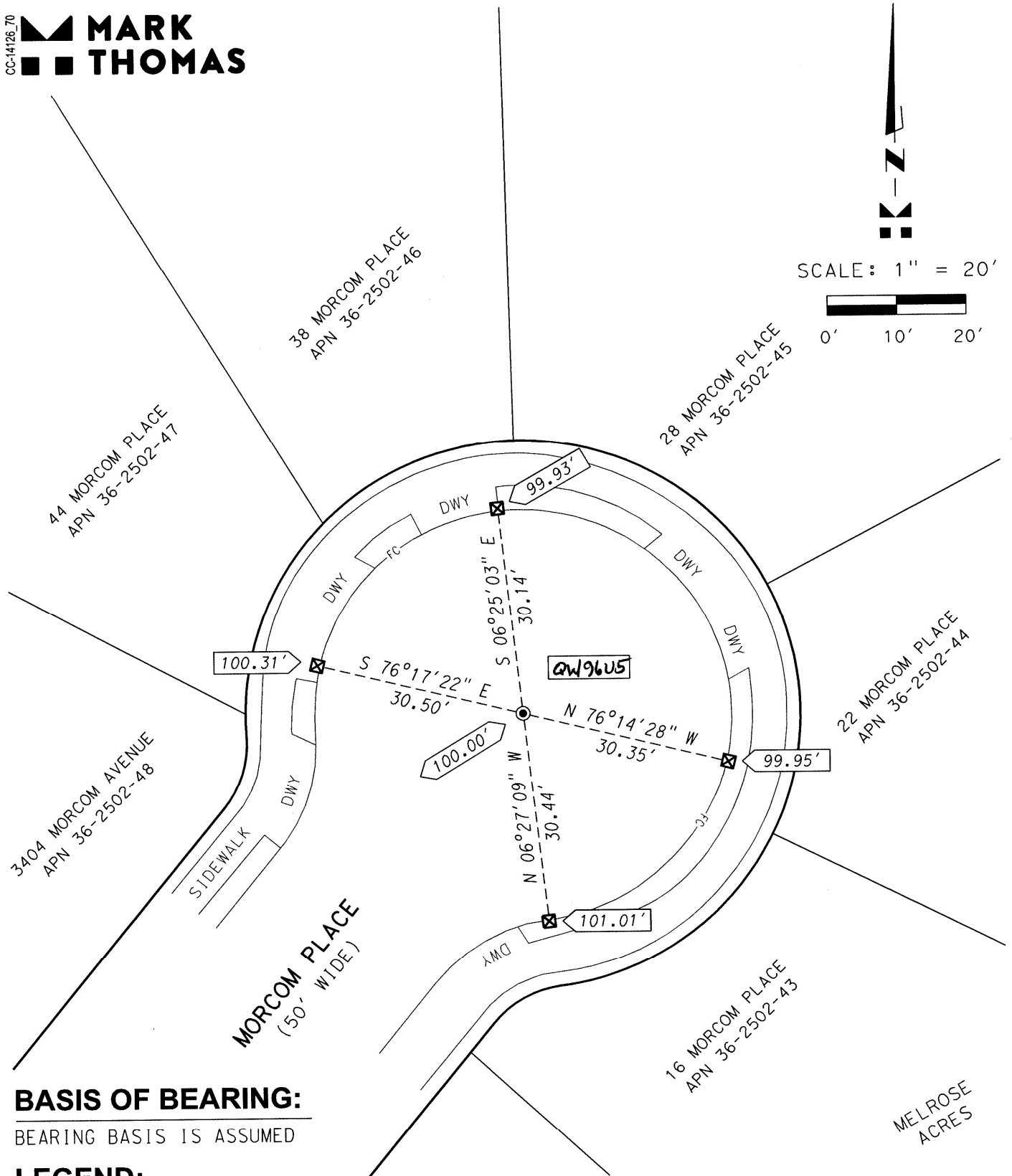
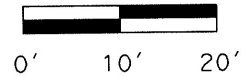
Signed

P.L.S. or P.C.E. No. 6843Title COUNTY SURVEYOR

County Surveyor's Comment

CC-14126.70
MARK THOMAS

SCALE: 1" = 20'



BASIS OF BEARING:

BEARING BASIS IS ASSUMED

LEGEND:

- FOUND CONCRETE MONUMENT WITH 1/4" PIN IN WELL
- ⊠ SET CUT CROSS FOR REFERENCE POINT IN TOP OF CONCRETE CURB
- 100.00' MONUMENT ELEVATION (ASSUMED)
- XX.XXX' REFERENCE POINT ELEVATION (ESTABLISHED USING A DIGITAL LEVEL)
- ALAMEDA COUNTY MONUMENT IDENTIFICATION NUMBER