



PANDA EXPRESS, INC.
1683 Walnut Grove Ave.
Rosemead, California
91770
Telephone: 626.799.9898
Facsimile: 626.372.8288

All ideas, designs, arrangement and plans indicated, or represented by this drawing are the property of Panda Express Inc. and were created for use on this specific project. None of these ideas, designs, arrangements or plans may be used by or disclosed to any person, firm, or corporation without the written permission of Panda Express Inc.

REVISIONS:

△ BLDG. HEALTH, SITE PLAN COMMENTS 08-13-18

ISSUE DATE:

1st ISSUE FOR BUILDING PERMIT 05-09-18

2nd ISSUE FOR BID 09-07-18

DRAWN BY: RR

PANDA PROJECT #: S8-19-D5937

ARCH PROJECT #: 1803

Project No.
PE1803
Kurzynske & Associates
CONSULTING ENGINEERS
2900 Lebanon Pike
Suite 201
Nashville, Tennessee 37214



09-07-18

PANDA EXPRESS
Rangeline Road at Halls Mill Road
4439 RANGELINE ROAD
MOBILE, AL

2200 TRUE WARM & WELCOME (DD3)

E-104

ROOF POWER PLAN

- ALL ROOF MOUNTED EQUIPMENT SHALL BE IN NEMA-3R ENCLOSURES.
- ALL CONDUIT RUNS SHOWN ON THE ROOF SHALL BE RUN BELOW THE CEILING SPACE WHERE AMBIENT TEMPERATURE WILL BE BELOW 30° C. FINAL CONNECTIONS TO THE ROOF EQUIPMENT ARE LIMITED TO 5'-0" FOR DIRECT SOLAR EXPOSURE.
- NOT USED.
- VERIFY ALL FUSE SIZES AND TYPES WITH THE AIR CONDITIONING EQUIPMENT MANUFACTURER PRIOR TO INSTALLATION.
- REVIEW THE MECHANICAL PLANS FOR THE AIR CONDITIONING CONTROL REQUIREMENTS AND SCOPE OF WORK PRIOR TO BIDDING AND INCLUDE ALL COSTS IN BID.
- VERIFY CONNECTION POINTS OF ALL HVAC EQUIPMENT PRIOR TO INSTALLATION. PROVIDE CONTROL VOLTAGE CONNECTION TO DUCT MTD. SMOKE DETECTOR AS REQUIRED BY MECHANICAL DRAWING M-100.
- SEE MECHANICAL DRAWINGS FOR EXACT LOCATIONS OF MECHANICAL EQUIPMENT AND THERMOSTATS. PROVIDE RACEWAY SYSTEM FOR ALL CONTROL WIRING AS REQUIRED BY MECHANICAL DRAWING M-100.
- G.C. COORDINATE ELECTRICAL, MECHANICAL, FIRE ALARM (IF REQUIRED) FOR INTERLOCK SEQUENCE.
- NOT USED.

ROOF PLAN GENERAL NOTES 2
NOT TO SCALE **E-104**

- ROUTE HOMERUN THROUGH BACK OF HOUSE LIGHTING CIRCUIT. REFER TO LIGHTING PLAN, SHEET 1 / E-101. FAN TO BE CONTROLLED BY SWITCH FOR BACK OF HOUSE LIGHTING.
- DUCT SMOKE DETECTOR, FURNISHED BY MECHANICAL/FACTORY, WIRED BY ELECTRICAL / FIRE ALARM CONTRACTOR. FURNISH AND INSTALL ALL RACEWAY, WIRING, AND ADDITIONAL ACCESSORIES REQUIRED FOR CODE COMPLIANCE AND UNIT SHUTDOWN.
- CIRCUIT FEEDS FROM PANELBOARD - THROUGH HOOD CONTROL PANEL - UP TO ROOF. REFER TO DETAIL, SHEET 3 / E-401 - KITCHEN HOOD SUBMITTAL DATA.
- REFER TO CONDENSING UNIT WIRING DIAGRAM, SHEET 7 / E-400.
- STRUT RACK SUPPORT FOR EQUIPMENT DISCONNECT SWITCHES. REFER TO DETAIL, SHEET 2 / E-401.
- PROVIDE AND INSTALL 2-1/2" DIA GALVANIZED RIGID METAL CONDUIT AND WEATHERHEAD AS SHOWN. CONDUIT TO BE STRAPPED TO CLOSEST JOIST TO THE MANAGER'S STATION (FULL DEPTH). SEE DETAIL 2/A-108
- DO NOT INSTALL UNTIL BACK DRAFT DAMPER INSTALLATION IS COMPLETE. UTILIZE FACTORY KNOCKOUTS FOR ELECTRICAL RUN FOR THIS FAN. REFER TO SHEET M-402.
- MOUNT PHOTOCELL AS DETAILED ON SHEET 11-E400 ON CONDENSER RACK.
- STUB ELECTRICAL FEED FOR EF-1 □ EF-2, THROUGH ROOF ON HINGE SIDE OF EXHAUST FANS, IN LOCATION AS SHOWN ON POWER ROOF PLAN. REFER TO DETAIL 3/M-501 FOR ADDITIONAL DETAILS.
- FEED THROUGH FACTORY THRU BASE CONNECTION AREA. COORDINATE WITH MECHANICAL.
- UNIT INCLUDES FACTORY MOLDED CASE DISCONNECT SWITCH (NO OCP). VERIFY WITH MECHANICAL SUBMITTAL DATA. PROVIDE DISCONNECT IF / AS REQUIRED.

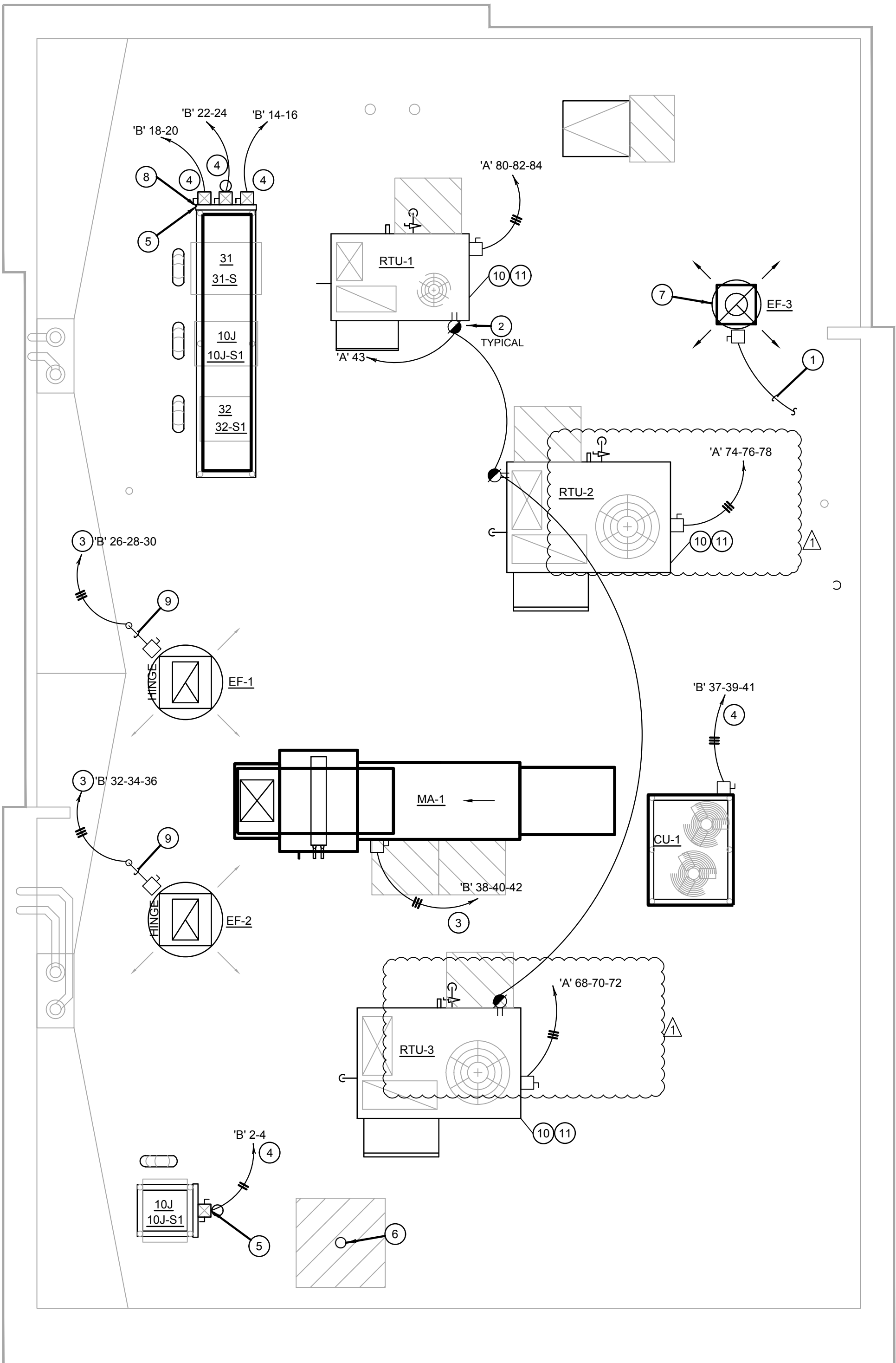
ROOF PLAN KEYED NOTES 3
NOT TO SCALE **E-104**

ROOFTOP EQUIPMENT SCHEDULE										
TAG	DESCRIPTION	KW	H.P.	FLA	VOLT/Ø	WIRE, CONDUIT	CONN.	MOUNT HEIGHT	DISC. SW. WITH RK1 FUSES PER MFR'S REQ'S. AND/OR REMARKS	
AC-1	A/C UNIT (5 TON)			32.0	208V.3Ø	3 #6, #10 GND., 1" C.	□	AT UNIT	60A, 3P, 3F, WP (1) (4)	
AC-2	A/C UNIT (10 TON)			57.0	208V.3Ø	3 #4, #8 GND., 1.25" C.	□	AT UNIT	60A, 3P, 3F, WP (1) (4)	
AC-3	A/C UNIT (10 TON)			57.0	208V.3Ø	3 #4, #8 GND., 1.25" C.	□	AT UNIT	60A, 3P, 3F, WP (1) (4)	
CU-1	CONDENSING UNIT			40.6	208V.3Ø	3 #6, #10 GND., 1" C.	□	AT UNIT	60A, 3P, 3F, WP (1)	
MA-1	MAKE-UP AIR UNIT	5.0	15.0	208V.3Ø	3 #12, #12 GND., 3/4" C.	□	AT UNIT	(1) (4)		
EF-1	EXHAUST FAN	2.0	5.9	208V.3Ø	3 #12, #12 GND., 3/4" C.	□	AT UNIT	(1)		
EF-2	EXHAUST FAN	2.0	5.9	208V.3Ø	3 #12, #12 GND., 3/4" C.	□	AT UNIT	(1)		
EF-3	EXHAUST FAN	1/4	4.8	120V.1Ø	2 #12, #12 GND., 3/4" C.	□	AT UNIT	30A, 2P, 1F, WP (1) (4)		
31-S	W/I COOLER COND.	1.5	15.0	208V.1Ø	2 #12, #12 GND., 3/4" C.	☒	AT UNIT	(2) (3)		
32-S1	W/I FREEZER COND.	1.5	20.0	208V.1Ø	2 #10, #10 GND., 3/4" C.	☒	AT UNIT	(2) (3)		
10J-S1	ICE MACHINE COND.			11.7	208V.1Ø	2 #12, #12 GND., 3/4" C.	☒	AT UNIT	(2) (3)	

- (1) DISCONNECT SWITCH PROVIDED WITH UNIT.
- (2) COMBINATION 30A, 2P, 2F, WP DISCONNECT SWITCH WITH RK5 FUSES PER MANUFACTURER RECOMMENDATION.
- (3) COMBINE CIRCUITRY IN 1" CONDUIT FROM J-BOX ON EQUIPMENT DISCONNECT SWITCH SUPPORT. REFER TO DETAIL THIS SHEET, 1 / E-104.
- (4) ELECTRICAL FEEDS ARE TO BE ROUTED FROM PLENUM SPACE, UP THROUGH EQUIPMENT CURB, INTO BOTTOM OF EQUIPMENT, THROUGH FACTORY INSTALLED WATER TIGHT CONNECTIONS.

HVAC EQUIPMENT SCHEDULE 4
NOT TO SCALE **E-104**

NOTE:
CONVENIENT RECEPTACLES WILL BE FACTORY INSTALLED ON RTU'S UNITS AND POWERED VIA CIRCUIT B-29.



ROOF POWER PLAN 1
1/4" = 1'-0" **E-104**