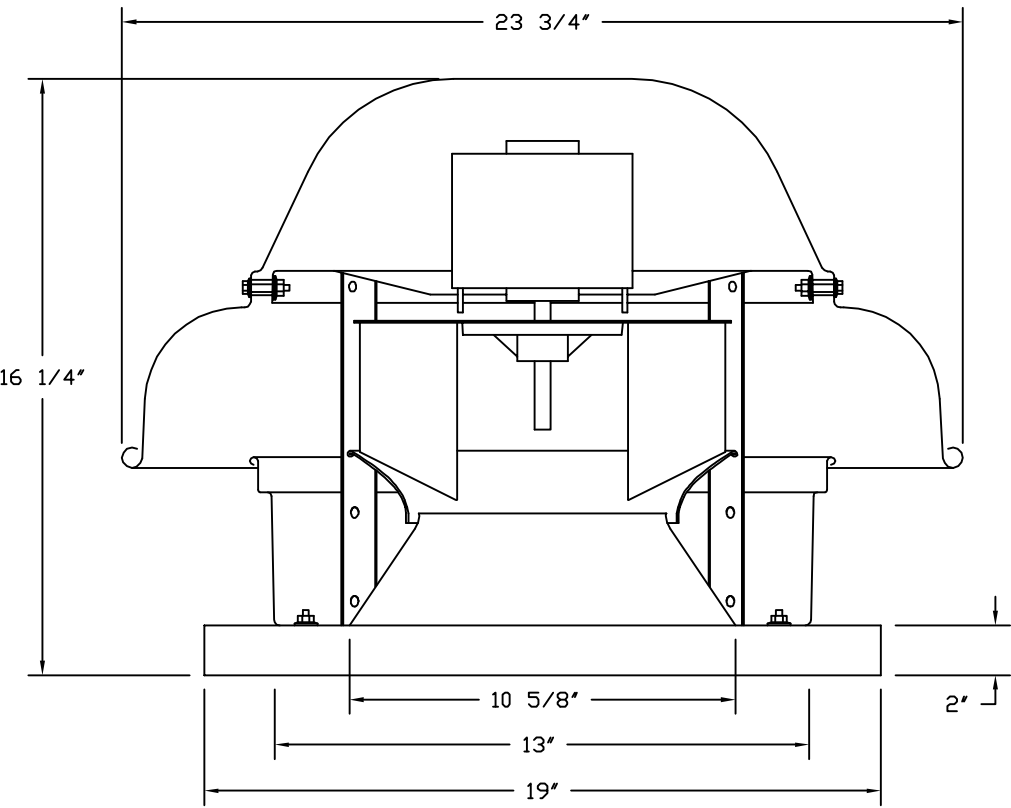


FAN #3 DR12HFA - EXHAUST FAN

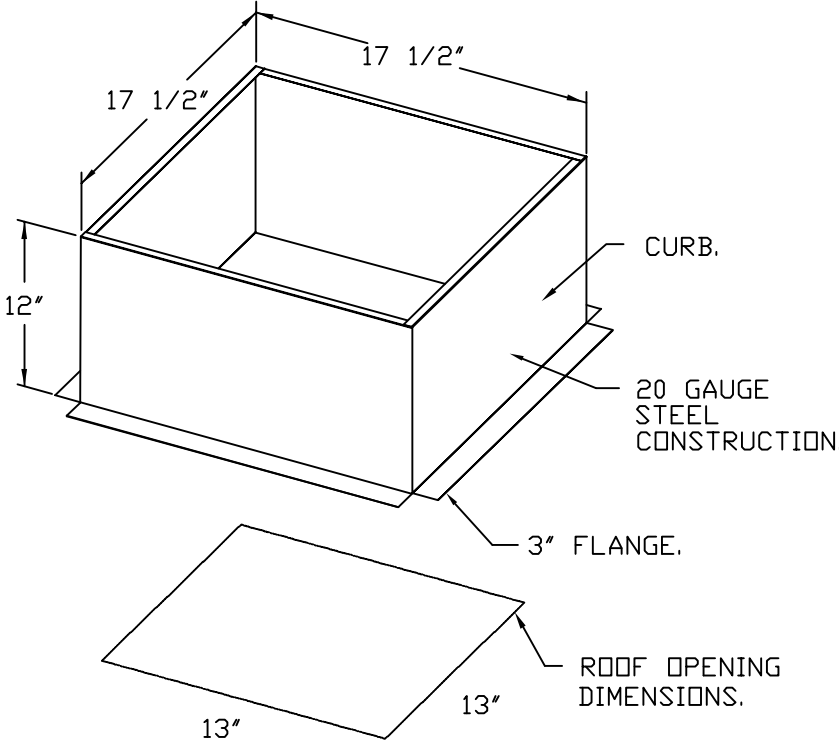


FEATURES:

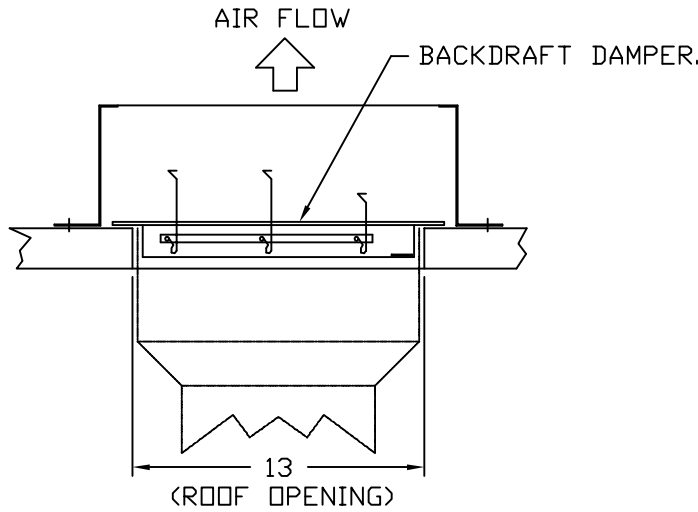
- DIRECT DRIVE CONSTRUCTION (NO BELTS/PULLEYS).
- ROOF MOUNTED FANS.
- UL705.
- SAFETY DISCONNECT.
- STANDARD BIRD SCREEN.
- SPEED CONTROL.
- THERMAL OVERLOAD PROTECTION (SINGLE PHASE).

OPTIONS

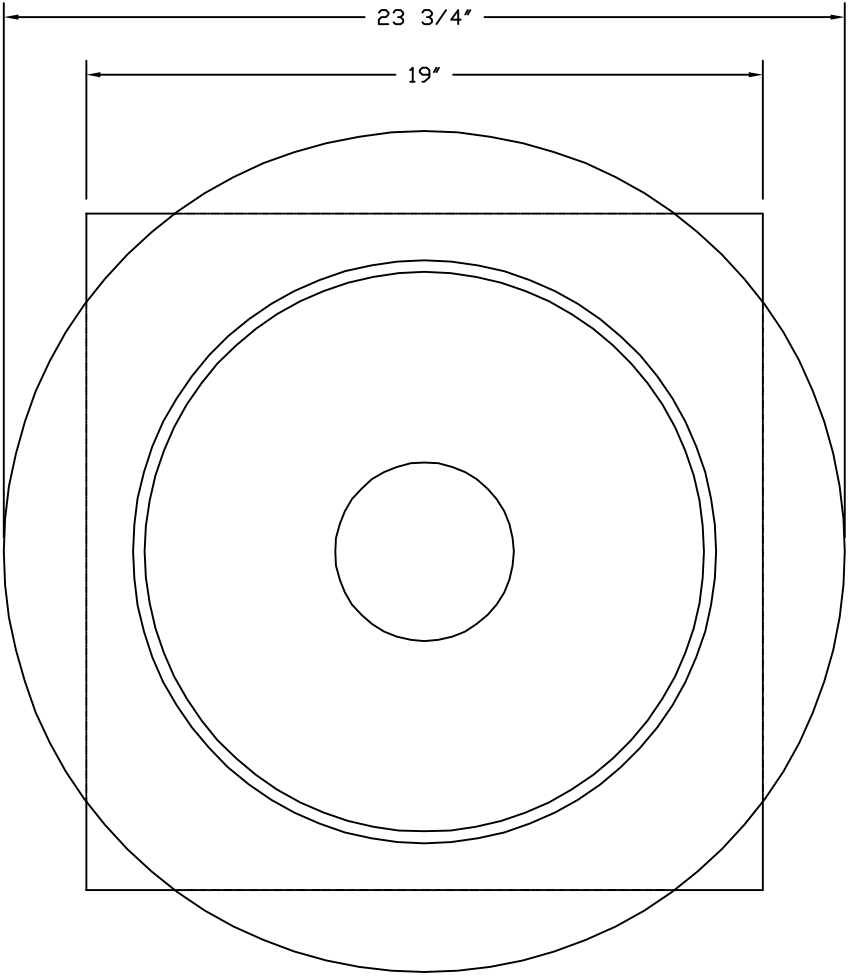
- ECM WIRING PACKAGE - MANUAL OR 0-10VDC REFERENCE SPEED CONTROL
- RTC- (TELCO MOTOR), CCW ROTATION.
- 1 12-BDD DAMPER.
- 2 YEAR PARTS WARRANTY.



BACKDRAFT DAMPER INSTALLATION



TOP VIEW



NOTE: UNLESS OTHERWISE STATED, PANDA RESTAURANT GROUP SHALL PROVIDE ALL EQUIPMENT ON THE FOLLOWING CAPTIVEAIRE SHEETS, INCLUDING: HOODS, FIRE SYTEM, EXHAUST FANS, SUPPLY FAN, BATHROOM FAN AND ELECTRICAL INTERLOCK PACKAGE

DOUBLE WALL DUCT BY MECHANICAL PLEASE USE CONTACT BELOW FOR PRICING

ANSUL GAS VALVE:

THE ANSUL GAS VALVE IS PROVIDED BY CAPTIVEAIRE SYSTEMS. CONTACT OUR OFFICE WITH THE VALVE SIZE 3 DAYS IN ADVANCE OF WHEN IT IS NEEDED ON SITE.

FOR QUESTIONS CALL THE CAPTIVEAIRE SOUTHERN CA NATIONAL ACCOUNTS OFFICE

3002 DOW AVENUE, SUITE 410
TUSTIN, CA 92780
TEL: 714-677-2963 EMAIL: REG83@CAPTIVEAIRE.COM

REVISIONS

DESCRIPTION	DATE

www.captiveaire.com

Southern CA National Accounts
3002 Dow Ave., Suite 410, Tustin, CA 92780 PHONE: (714) 677-2963 EMAIL: reg83@captiveaire.com

Panda Express - Concord NC (D24956)
450 Kannapolis Parkway,
Concord, NC, 28027

DATE: 5/4/2023
DWG.#: 5986683
DRAWN BY: AH-83
SCALE: 3/4" = 1'-0"
MASTER DRAWING
SHEET NO. 5

PROFESSIONAL ENGINEERS
"No matter the Scope, KPI has YOU Covered"
3303 QUEEN PALM DRIVE
TAMPA, FLORIDA 33619
PHONE (813) 241-6488
FAX (813) 241-6488
BOARD OF PROFESSIONAL ENGINEERS - LICENSE # C-4470



PANDA EXPRESS, INC.
1683 Walnut Grove Ave.
Rosemead, California
91770
Telephone: 626.799.9898
Facsimile: 626.372.8288

All ideas, designs, arrangement and plans indicated or represented by this drawing are the property of Panda Express Inc. and were created for use on this specific project. None of these ideas, designs, arrangements or plans may be used by or disclosed to any person, firm, or corporation without the written permission of Panda Express Inc.

REVISIONS:

ISSUE DATE:

CHECK SET	04-20-23
BID/PERMIT SET	06-01-23

DRAWN BY: BDG

PANDA PROJECT #: D24956
PANDA STORE #: TBD
ARCH PROJECT #: 239201

bdg architects
brian d. gentry, p.e.
State #00
Tampa, FL 33602
www.bdgjo.com

SCOTT ROBERT NELSON, P.E.
NC LIC. # 049030

PANDA EXPRESS

PANDA HOME 2600
450 Kannapolis Parkway
Concord, NC 28027

M-404

HOOD DETAIL PLAN

PANDA HOME 2600 R3