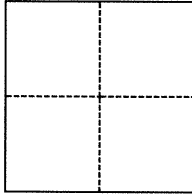


# CORNER RECORD

Agency Index BK 107 PG 53  
Document Number CR 11028

City of OAKLAND County of ALAMEDA, California  
Brief Legal Description WELL MONUMENT LOCATED WITHIN MOUNTAIN BLVD.

## CORNER TYPE



- ☐ Government Corner ☒ Control  
☐ Meander ☐ Property  
☐ Rancho ☐ Other

Date of Survey MAY 21, 2017

## COORDINATES (Optional)

N. \_\_\_\_\_ E. \_\_\_\_\_  
Elevation \_\_\_\_\_  
Units ☐ Metric ☐ U.S. Survey Foot  
Horizontal Datum \_\_\_\_\_  
Zone \_\_\_\_\_ Epoch Date \_\_\_\_\_  
Vertical Datum \_\_\_\_\_  
☐ Complies with Public Resources Code §§8801-8819  
☐ Complies with Public Resources Code §§8890-8902

PLS Act Ref.: ☐ 8765(d) ☒ 8771 ☐ 8773 ☐ Other:  
Corner/  
Monument: ☐ Left as found ☐ Established ☐ Rebuilt ☒ Pre-Construction  
☐ Found and tagged ☐ Reestablished ☐ Referenced ☐ Post-Construction

Narrative of corner identified and monument as found, set, reset, replaced, or removed:

☒ See sheet #2 for description(s): FOUND PIN IN WELL MONUMENT AS SHOWN ON OAKLAND MONUMENT MAP AT THE LOCATION AS SHOWN ON SHEET 2. SET REFERENCE NAILS AND TAGS LS 7739. SEE SHEET 2.

## SURVEYOR'S STATEMENT

This Corner Record was prepared by me or under my direction in conformance with

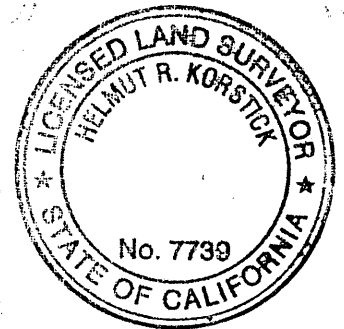
the Professional Land Surveyors' Act on

APRIL 26, 2018

Signed

P.L.S. or R.C.E. No.

PLS 7739



## COUNTY SURVEYOR'S STATEMENT

This Corner Record was received

15 FEBRUARY 2018

and examined and filed

15 MAY 2018

Signed

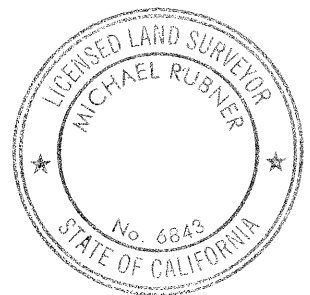
P.L.S. or R.C.E. No.

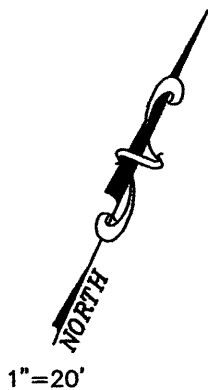
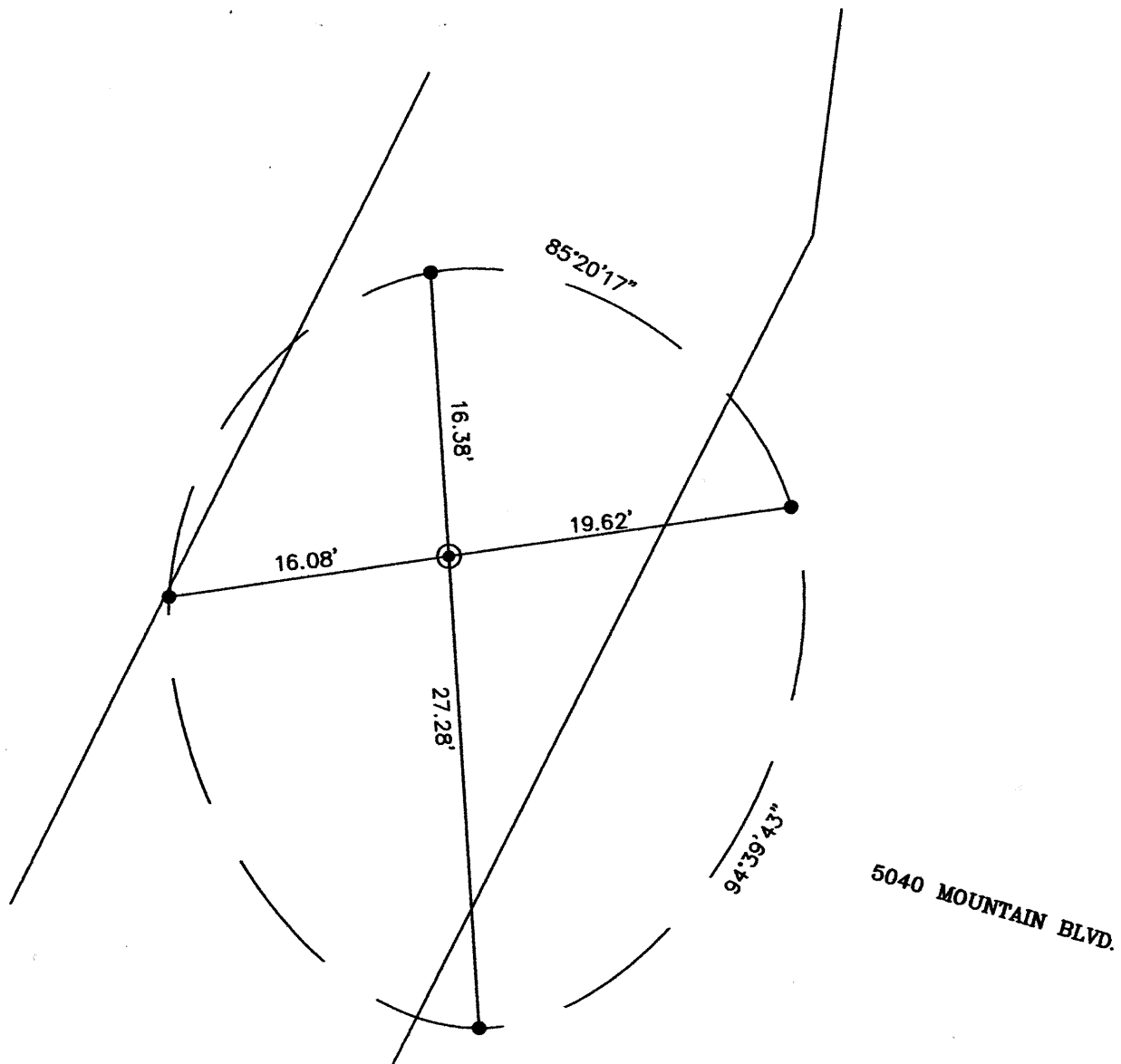
6843

Title

COUNTY SURVEYOR

County Surveyor's Comment





● SET NAIL & BRASS TAG LS 7739  
REFERENCE POINTS

⊙ FND PIN IN CONC IN WELLMON

REF. OAKLAND MOMUMENT MAP PAGE 157