

CORNER RECORD

Agency Index

BK

PG

78

Document Number

CR 10439

City of

OAKLAND

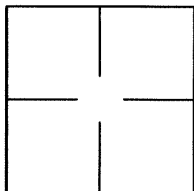
County of

ALAMEDA

, California

Brief Legal Description

DAVIS ST. AND CLARKE ST.

**CORNER TYPE**Government Corner ☐

Control

Meander ☐

Property

Rancho ☐

Other

COORDINATES (Optional)

N.

E.

☒ Elevation☐ UnitsMetric ☐U.S. Survey Foot ☒☐ Horizontal Datum

Zone Epoch Date

Vertical Datum

Date of Survey MAY 17, 2017

☐ Complies with Public Resources Code §§8801-8819☐ Complies with Public Resources Code §§8890-8902

PLS Act Ref:

☐ 8765(d)☒ 8771☐ 8773☐ Other:Corner/
Monument:☒ Left as found☐ Established☐ Rebuilt☒ Pre-Construction☐ Found and tagged☐ Reestablished☐ Referenced☐ Post-Construction

Narrative of corner identified and monument as found, set, reset, replaced, or removed:

☒ See sheet #2 for description (s):

FOUND 2" DIAMETER BRASS DISK WITH PUNCH. STAMPED 'CALIFORNIA DEPT OF TRANSPORTATION' 'A 75 7'. LOCATED IN MONUMENT WELL AT THE INTERSECTION OF DAVIS STREET AND CLARKE STREET.

SET NAIL AND TAG, STAMPED LS 8593 AS REFERENCE POINTS TO BE USED TO RESET MONUMENT SHOULD IT BE DISTURBED DURING CONSTRUCTION ACTIVITIES. SEE SHEET 2 FOR GRAPHIC

SURVEYOR'S STATEMENT

This Corner Record was prepared by me or under my direction in conformance with the Professional Land Surveyors' Act on JULY 7, 2017

Signed

(P.L.S.) or R.C.E. No.

8593

**COUNTY SURVEYOR'S STATEMENT**

This Corner Record was received 26 JULY, 2017

and examined and filed 1 SEPTEMBER, 2017

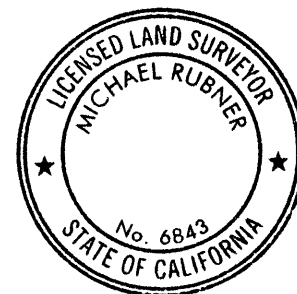
Signed

P.L.S. or R.C.E. No.

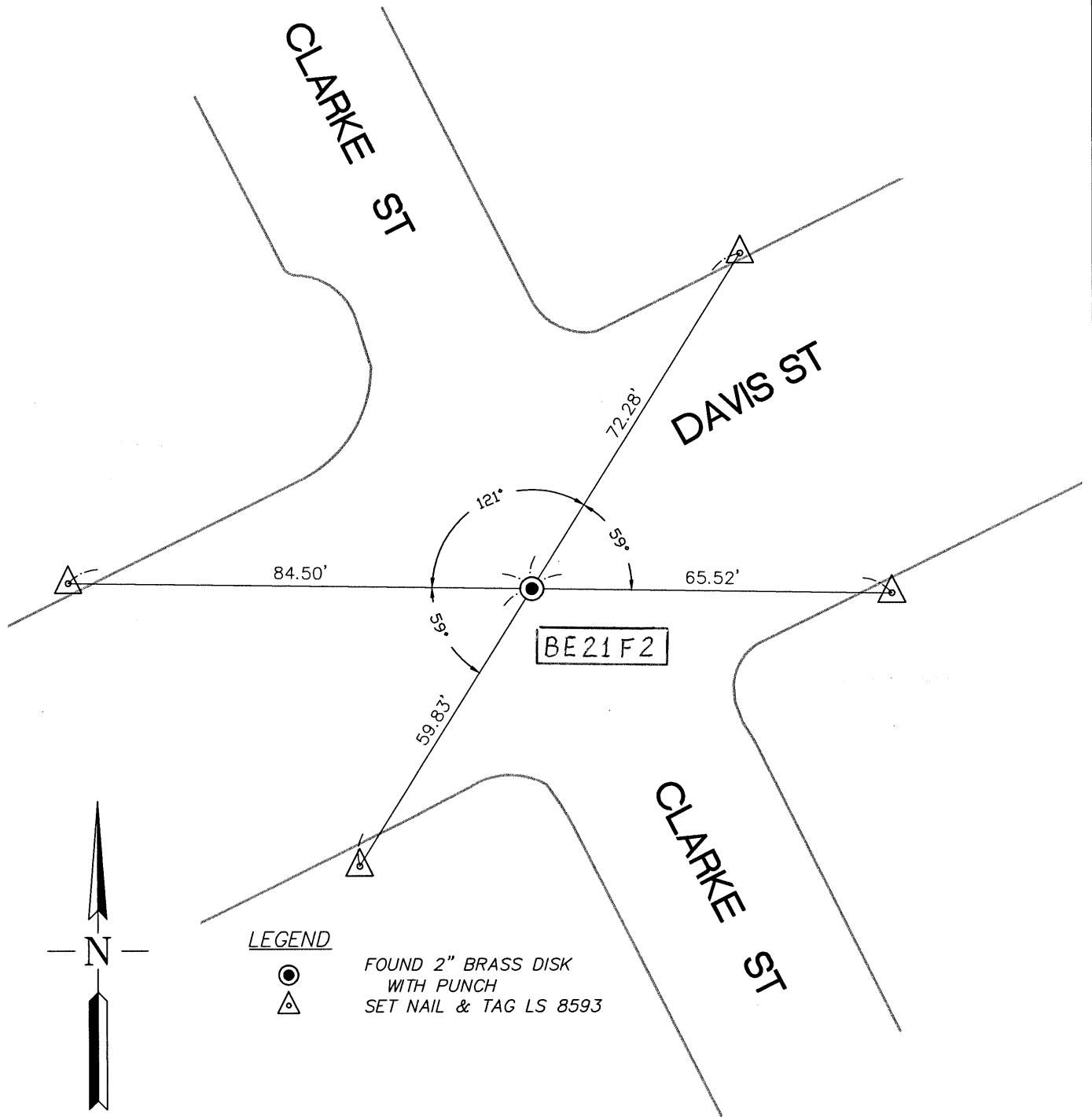
6843

Title

COUNTY SURVEYOR



County Surveyor's Comment



NOT TO SCALE