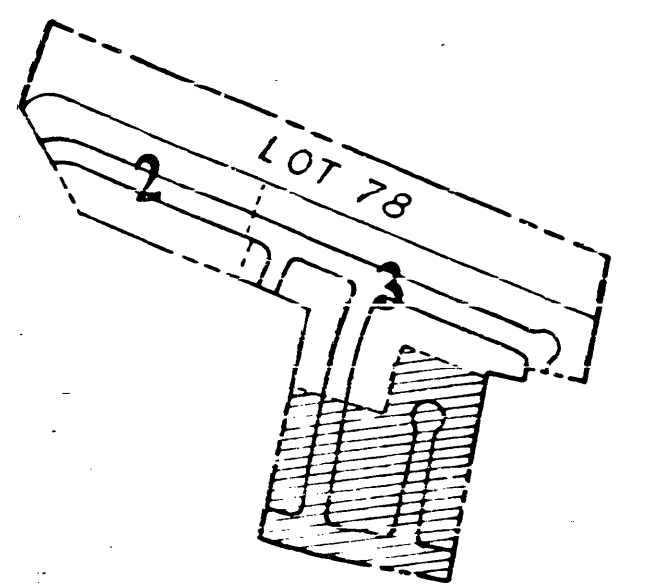
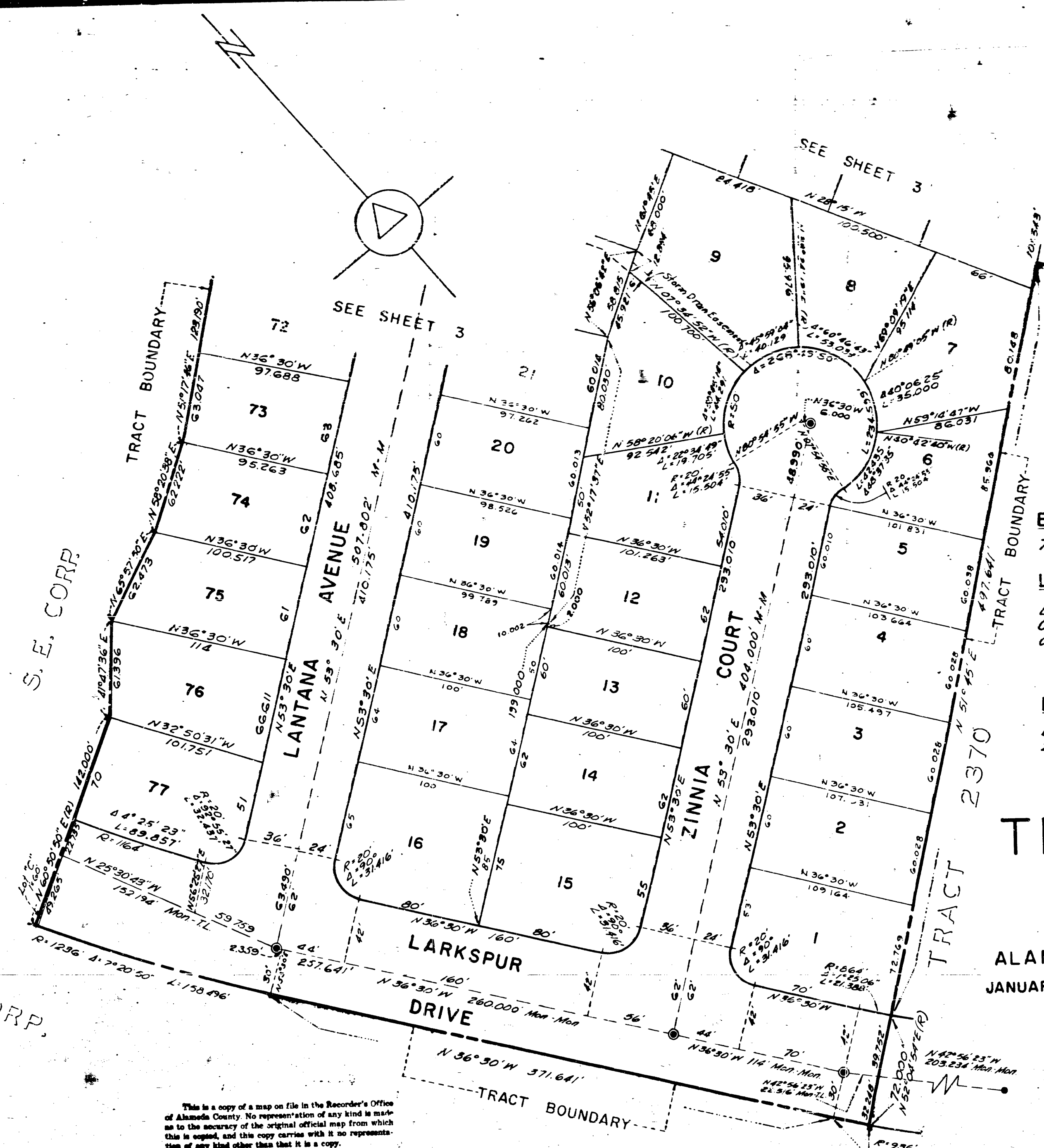


50-31-33

50/31-33



KEY MAP  
NOT TO SCALE



BASIS OF BEARINGS:  
TRACT 2370

LEGEND:  
Existing Monument  
Concrete Monument with cast iron frame and cover to be installed

BUILDING SET-BACK LINES:  
Building Set-Back Lines to be as required by the zoning ordinance of the City of Livermore.

TRACT 2510  
LIVERMORE  
ALAMEDA COUNTY, CALIFORNIA  
JANUARY, 1965  
SCALE: 1" = 50'

MURRAY & MCCORMICK INC.  
CONSULTING CIVIL ENGINEERS  
SAN LEANDRO, CALIFORNIA

27D2510M

AX 63917 SHEET 4 OF 5 SHEETS

This is a copy of a map on file in the Recorder's Office of Alameda County. No representation of any kind is made as to the accuracy of the original official map from which this is copied, and this copy carries with it no representation of any kind other than that it is a copy.  
Any questions concerning this map should be directed to the Recorder's Office of Alameda County.  
DEYERICH POST COMPANY

AX 63917 FILED MAY 10, 1965 Book 50 Pages 31, 32, 3

503