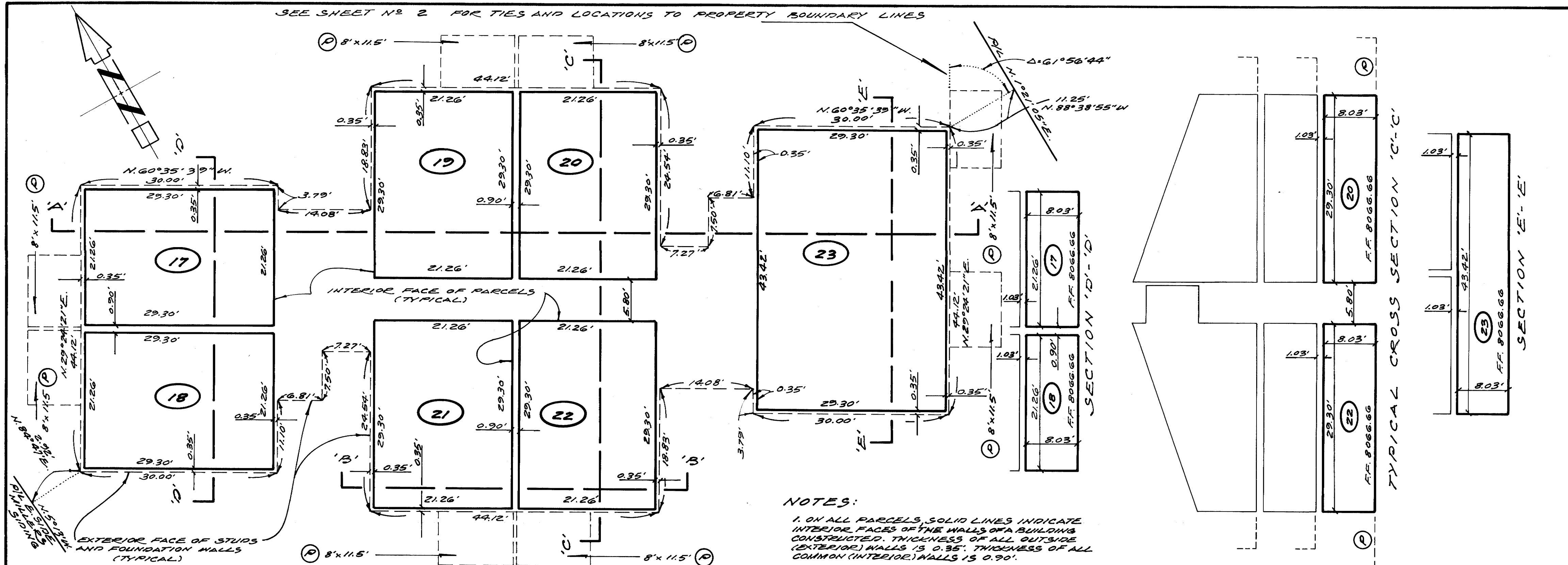


SEE SHEET NO 2 FOR TIES AND LOCATIONS TO PROPERTY BOUNDARY LINES



**NOTE: BENCH MARK**  
TOP OF R.R. SPIKE AND TIN AT CENTERLINE INTERSECTION OF HORSESHOE DRIVE AND CANYON BOULEVARD ELEVATION 815.99 FEET. SEE BOOK 5 MARS PAGE 110 RECORDS OF THE COUNTY OF MONO, CALIFORNIA  
FF AS SHOWN DENOTES FINISHED FLOOR

FIRST FLOOR PLAN  
BUILDING NO. 3  
LOT NO. A

**NOTES:**

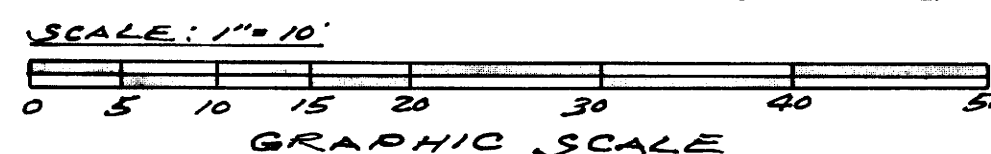
- ON ALL PARCELS, SOLID LINES INDICATE INTERIOR FACES OF THE WALLS OF A BUILDING CONSTRUCTED. THICKNESS OF ALL OUTSIDE (EXTERIOR) WALLS IS 0.35'. THICKNESS OF ALL COMMON (INTERIOR) WALLS IS 0.90'.
- THE BOUNDARIES OF THE PARCELS ARE MEASURED TO THE INTERIOR SURFACES OF THE VERTICAL, HORIZONTAL AND INCLINED PLANES. AT THE LIMITS OF THE DIMENSIONS OR ELEVATIONS SHOWN, THE BOUNDARIES OF EACH PARCEL ARE THE INTERIOR FACES OF ITS WALLS AND INTERIOR FACES OF ITS FINISHED FLOOR AND CEILING.
- ALL PARCEL BOUNDARIES ARE AT RIGHT ANGLES OR PARALLEL TO THE BEARINGS SHOWN. ALL INTERIOR WALLS ARE PLUMB AND VERTICAL PLANES ARE AT RIGHT ANGLES TO HORIZONTAL PLANES.
- EACH PARCEL (1 THROUGH 31) SHOWN THIS IS AN AREA IN SPACE IN A BUILDING BUILT OR TO BE BUILT AND IS EITHER ALL OR A PART OF A CONDOMINIUM UNIT.
- AREAS DESIGNATED BY THE LETTER (P) ARE PORCHES ADJACENT TO PARCELS AS SHOWN AND ARE NOT A PART OF THE UNITS OR PARCELS.
- THIS IS A MAP OF A CONDOMINIUM PROJECT TO BE COMPOSED OF 31 CONDOMINIUMS. ONE OF THE ELEMENTS OF EACH SUCH CONDOMINIUM IS A "UNIT".
- EACH PARCEL SHOWN IS EITHER ALL OR A PART OF A UNIT. EACH UNIT IS TO BE DESIGNATED WITH ONE OF THE NUMBERS 1 THROUGH 31, INCLUSIVE.
- EACH PARCEL SHOWN AND DESIGNATED WITH ONE OF THE NUMBERS 1 THROUGH 31, INCLUSIVE, OR ONE OF SUCH NUMBERS FOLLOWED BY THE SUFFIX "B" IS A SUB-DIVISION OF AIR SPACE (NOTE NO. 9 CONTINUED BELOW)

PROJECT OF  
**MAMMOTH FIRESIDE CONDOMINIUM NO. 1**  
(CONDOMINIUM PURPOSES)  
IN THE UNINCORPORATED TERRITORY  
OF  
MONO COUNTY  
CALIFORNIA

PREPARED BY: *Robert Martin & Associates* R.C.E. 11322

**ROBERT MARTIN & ASSOCIATES**  
CIVIL ENGINEERS & LAND SURVEYORS  
1143 EAST MAIN STREET  
VENTURA, CALIFORNIA 93001

(NOTES CONTINUED)  
3. EACH UNIT IS COMPOSED OF EITHER ONE OR TWO PARCELS. EACH OF UNITS 1 THROUGH 8, INCLUSIVE, AND 17 THROUGH 23, INCLUSIVE, IS COMPOSED OF BUT ONE PARCEL DESIGNATED WITH THE NUMBER USED TO DESIGNATE THE UNIT. EACH OF UNITS 9 THROUGH 16, INCLUSIVE, AND 24 THROUGH 31, INCLUSIVE IS COMPOSED OF TWO PARCELS ONE DESIGNATED WITH THE NUMBER USED TO DESIGNATE THE UNIT AND THE OTHER DESIGNATED WITH THE SAME NUMBER FOLLOWED BY THE SUFFIX "B".



SHEET NO 4 OF 9

< F-2167, D-3208 >