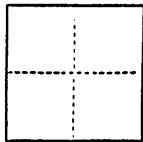


CORNER RECORD

CR 312

COUNTY OF ALAMEDA T. 15 R. 3W MOUNT DIABLO MERIDIAN CALIFORNIACORNER TYPE: GOV'T. CORNER ☐ MEANDER ☐ RANCHO ☐ CONTROL ☐ OTHER ☐CORNER IDENTIFICATION — DATE OF VISIT 7-9-1993

LOT 24, BLOCK 6, HIGHLAND MANOR, OAKLAND, CA.
BOOK 14, PAGE 24, ALAMEDA COUNTY RECORDS

CORNER — LEFT AS FOUND ☐ FOUND AND TAGGED ☐ REESTABLISHED OBLITERATED CORNER ☐ REBUILT ☐

PHYSICAL DESCRIPTION OF CORNER FOUND; EVIDENCE AND METHOD USED TO IDENTIFY OR REESTABLISH

FOUND TWO SUBDIVISION MONUMENTS ON BROADWAY TERRACE, FORMERLY
MCADAM AVE., RETRACED MON. LINES OF PROCTER AVE. & ALTA RD.
ALSO FOUND TWO CROSSES ON THE CURB OF AGNES ST. SET STAKES AT THE
CORNERS OF LOT 24 AS SHOWN BELOW.

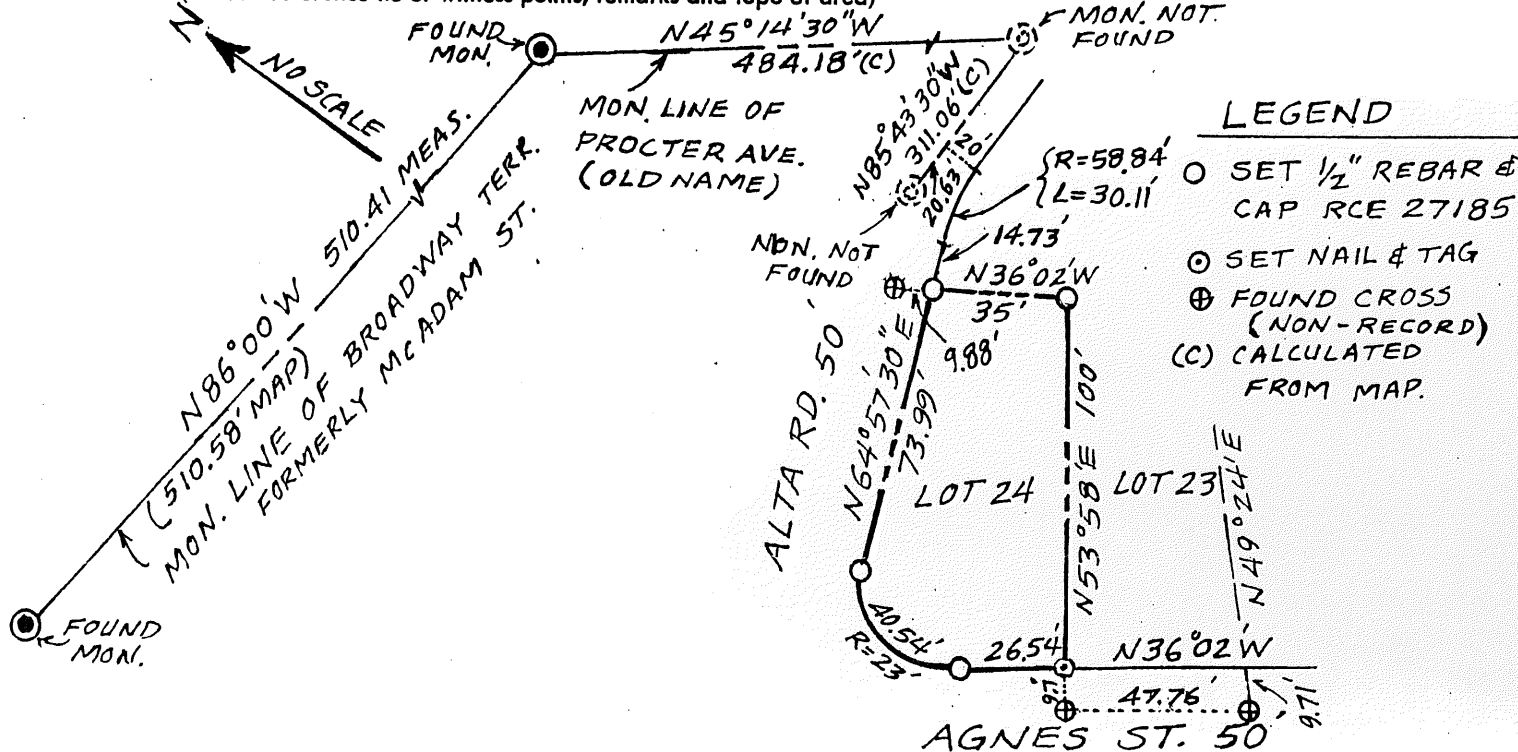
PHYSICAL DESCRIPTION OF MONUMENTS REBUILT OR PERPETUATED

THE MONUMENTS FOUND ON BROADWAY TERRACE ARE STANDARD
STEEL CYLINDERS SET IN CONCRETE PAVEMENT WITH A PIN INSIDE
THE CASING.

CALIFORNIA COORDINATE SYSTEM ORDER: FIRST ☐ SECOND ☐ THIRD ☐
STATIONS USED: NGS (USC & GS) ☐ STATE ☐ COUNTY ☐ OTHER ☐ STATION _____ STATION _____
ZONE _____ ELEVATION _____ NORTHINGS (Y) _____ EASTINGS (X) _____

(Fold)

SKETCH: (Include reference tie or witness points, remarks and topo of area)



SURVEYOR'S CERTIFICATE

THIS CORNER RECORD WAS PREPARED BY ME OR UNDER MY
CONFORMANCE WITH THE LAND SURVEYORS ACT

9/29/1993

A. Moghaddas

RCE 27185

SEAL

EXPIRES
3-31-97

COUNTY SURVEYOR'S CERTIFICATE

THE CORNER RECORD WAS RECEIVED OCT 11 1993
AND EXAMINED AND FILED 8-17-1994BY: Russell R. BennettTITLE: City County Surveyor

STATEMENT ON BACK OF SHEET

YES ☐NO ☒