

PARCEL MAP 3951

CITY OF FREMONT · ALAMEDA COUNTY · CALIFORNIA
CONSISTING OF 3 SHEETS

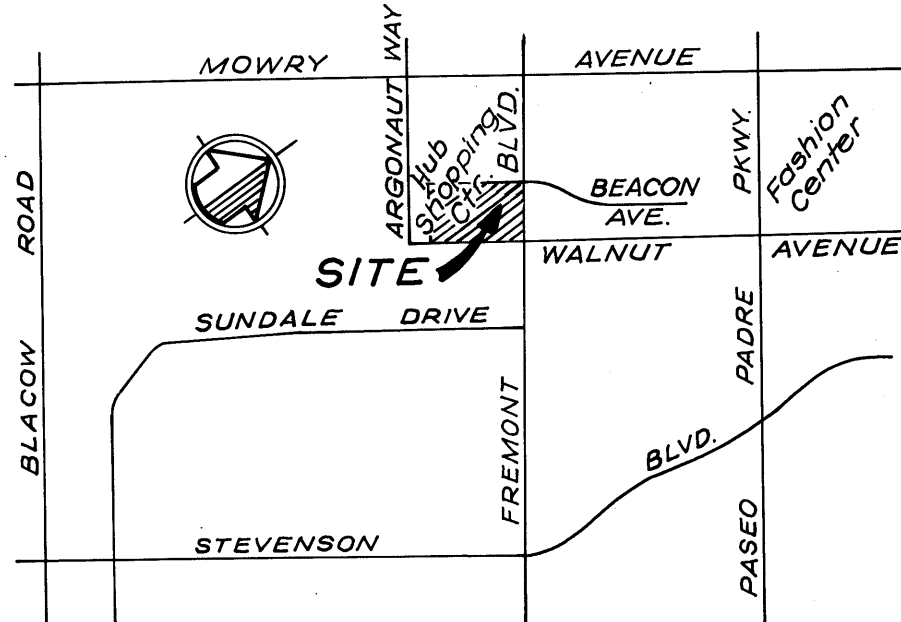
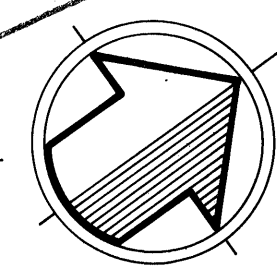
CREEGAN & D'ANGELO

CONSULTING ENGINEERS
FREMONT, CALIFORNIA

FEBRUARY, 1983
SCALE: 1" = 20'

★ USE WITH CAUTION ★
THIS IS A PUBLIC WORKS DEPARTMENT
WORKING COPY OF AN OFFICIAL MAP
ON FILE IN THE OFFICE OF THE COUNTY
RECORDER, COUNTY OF ALAMEDA. OF-
FICE INFORMATION OR CALCULATIONS
MAY HAVE BEEN ADDED HEREON.

SCALE: 1" = 20'



VICINITY MAP

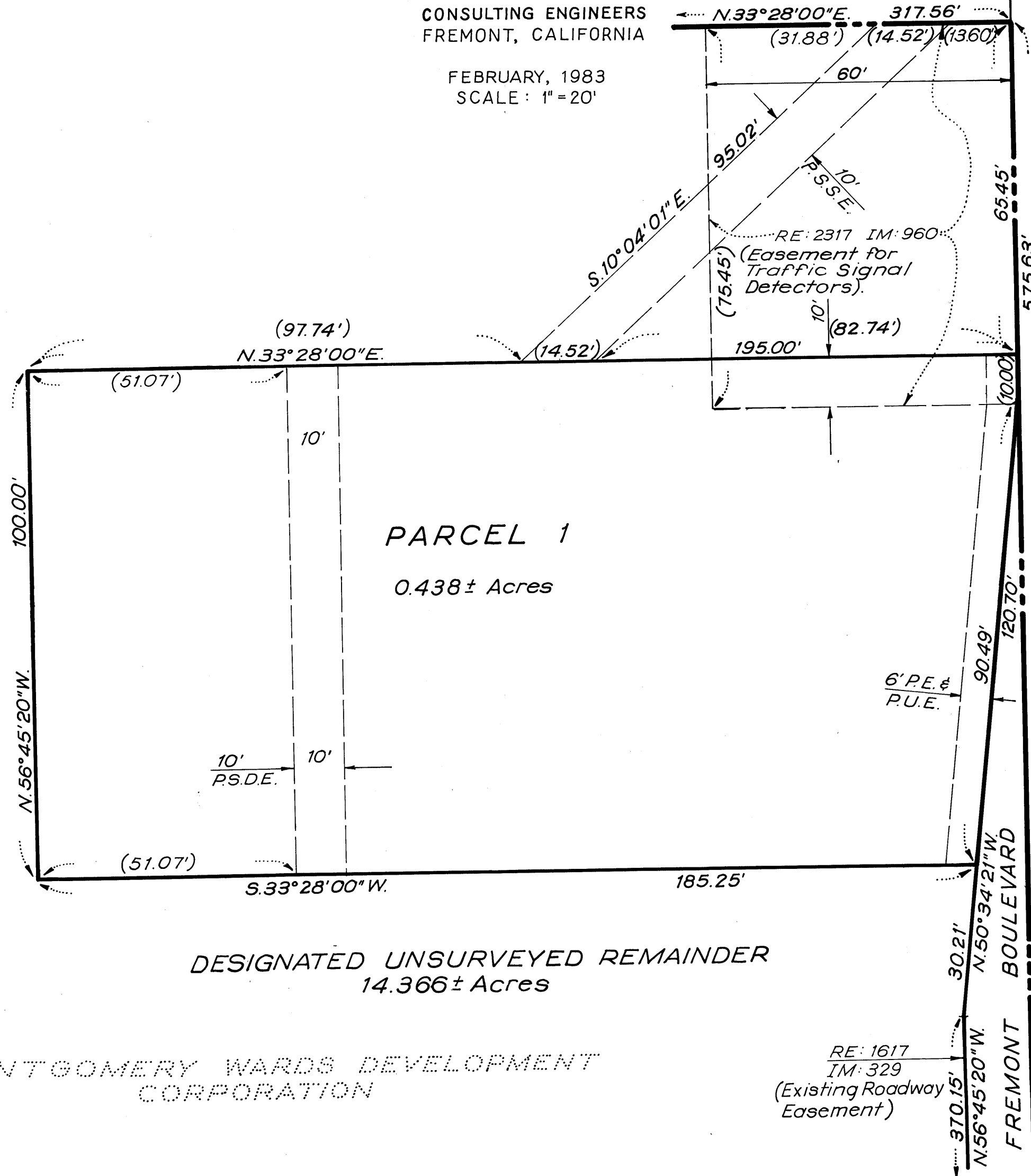
NO SCALE

BASIS OF BEARINGS

The centerline bearing N. 56°45'20" W. of Argonaut Way (Northeast Boundary of Tract 2101), recorded April 11, 1960 in Volume 41 at Pages 90 through 92, Alameda County Records, was used as the Basis of Bearings for this map.

LEGEND

- Property Boundary
- Proposed Lot Line
- Street Dedication
- +--- Centerline
- ⊙ Found Standard City Monument
- (51.07') Indicates Easement Data
- P.E. Pedestrian Easement
- P.U.E. Public Utility Easement
- P.S.D.E. Private Storm Drain Easement
- P.S.S.E. Private Sanitary Sewer Easement



MONTGOMERY WARDS DEVELOPMENT CORPORATION

DETAIL - PARCEL 1

NOTE

P.T. & T., P.G. & E., A.C.W.D., and A.C.F.C. & W.C.D. Easements are within the designated unsurveyed remainder.

BEACON AVENUE

EASEMENTS - REMAINDER PARCEL

Alameda County Water District -
Instrument dated June 19, 1964,
Recorded July 2, 1964, on Reel
1248, Image 466, (AW/106428).

Recorded September 10, 1965,
Reel 1594, Image 21, Official
Records, Instrument No. AX/125343.

Pacific Telephone and Telegraph
Company -
Recorded September 27, 1965,
Reel 1606, Image 436, Official
Records, Instrument No.
AX/133555.

Pacific Gas and Electric Company -
Recorded April 17, 1967,
Reel 1948, Image 444, Official
Records, Instrument No. AZ/34746.

Recorded April 29, 1968, Reel 2170,
Image 926, Official Records,
Instrument No. BA/45965.

City of Fremont -
Recorded December 27, 1968, Reel
2317, Image 960, Official Records,
Instrument No. BA/142959.

Recorded May 21, 1971, Reel 2856,
Image 692, Official Records,
Instrument No. 71/61610.

Alameda County Flood Control and
Water Conservation District -
Any Easement or Lesser Right
for Storm Drainage Ditch.

WALNUT AVENUE

SHEET 3 OF 3 SHEETS

PM 3951

#83-100330

filed 6-10-83

138/54

PM 3951

138/54