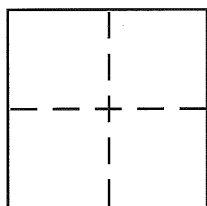


CORNER RECORD

Document Number BK 32 Pg 49
CR 3628
 City of San Leandro County of Alameda, California

Brief Legal Description Intersections of Bancroft Ave. w/ Halsey Ave. and Dennis Ave.



CORNER TYPE

Government Corner ☐ Control ☐
 Meander ☐ Property ☐
 Rancho ☐ Other ☒
 Date of Survey AUG 2007

COORDINATES (Optional)

N. _____
 E. _____
 Zone _____ NAD27 ☐ NAD83 ☐
 NAD83 Epoch _____
 Elev. _____
 Vert. Datum: NGVD29 ☐ NAVD88 ☐
 Meas. Units: Metric ☐ Imperial ☐

Corner - Left as found ☒ Found and tagged ☐ Established ☐ Reestablished ☐ Rebuilt ☐

Identification and type of corner found: Evidence used to identify or procedure used to establish or reestablish the corner:

Found San Leandro standard city monuments as shown.
Set lead and tacks tagged LS 5399 as shown.

A description of the physical condition of the monument as found and as set or reset: _____

SURVEYOR'S STATEMENT

This Corner Record was prepared by me or under my direction in conformance with

the Land Surveyor's Act on December 30 2008

Signed Frank C. Bellum P.L.S. or R.C.E. No. 5399

COUNTY SURVEYOR'S STATEMENT

This Corner Record was received 2-5-09

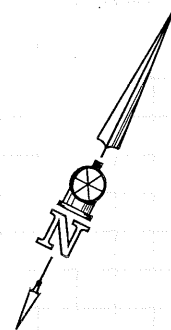
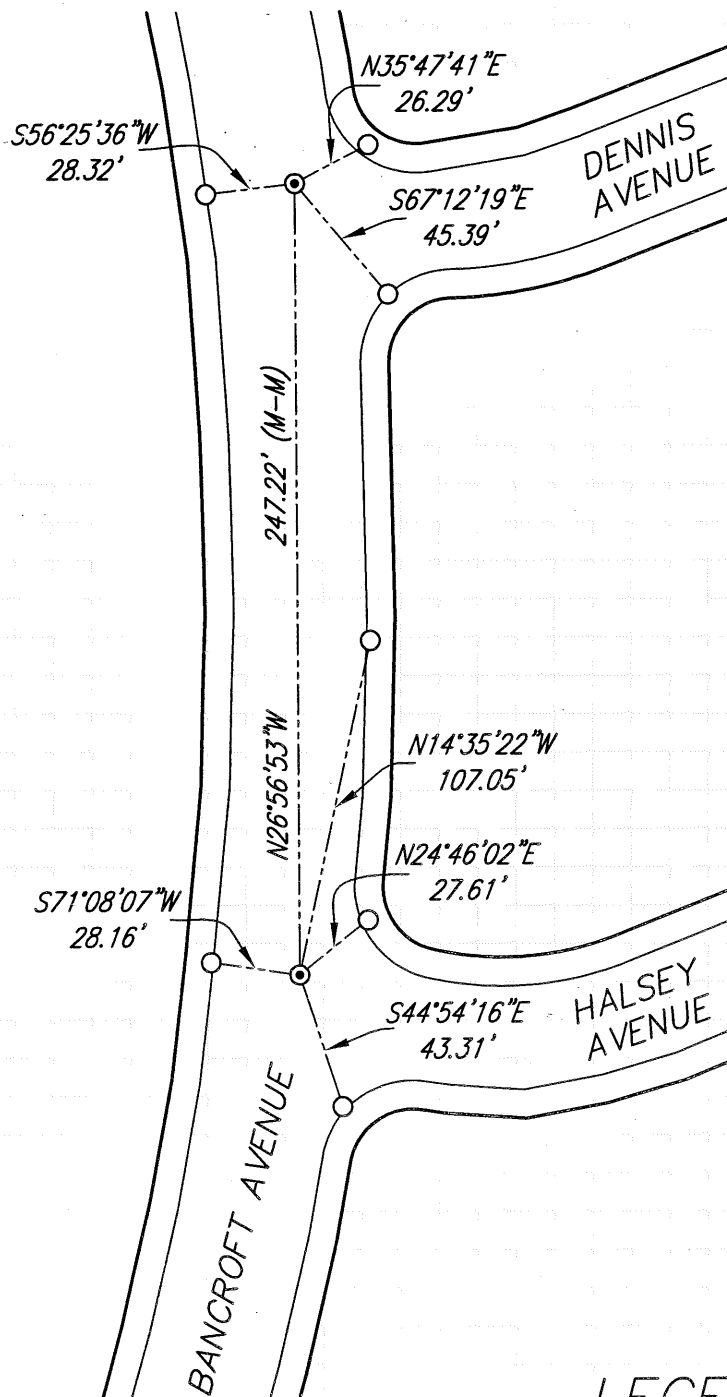
and examined and filed 3-8-09

Signed Russell R. Penland P.L.S. or R.C.E. No. 5726

Title COUNTY SURVEYOR

County Surveyor's Comment _____





SCALE 1" = 60'

LEGEND

- ⊙ FOUND SAN LEANDRO STANDARD CITY MONUMENT
- SET LEAD AND TACK TAGGED LS 5399
- (M-M) MONUMENT TO MONUMENT DISTANCE
- RIGHT OF WAY
- FACE OF CURB