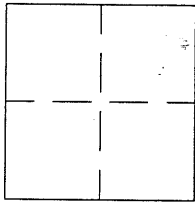


CORNER RECORD

APN No. _____ (Optional)

Document Number CR-1539

SAN LORENZO-UNINCORPORATED

County of ALAMEDA, CaliforniaBrief Legal Description BC MONUMENT ON VIA MEDIA**CORNER TYPE**

Government Corner ☐ Control ☐
 Meander ☐ Property ☐
 Rancho ☐ Other ☒
 Date of Survey JUNE 5, 2001

COORDINATES
(Optional)

N. _____
 E. _____
 Zone _____ Datum _____
 Elev. _____

Corner - Left as found ☒ Found and tagged ☐ Established ☐ Reestablished ☐ Rebuilt ☐

In compliance with Section 8771 of the Professional Land Surveyors' Act, this corner record is being filed to ESTABLISH X / REESTABLISH _____ the position of an existing monument PRIOR X / SUBSEQUENT _____ to street or highway reconstruction. (Use this portion only when applicable.)

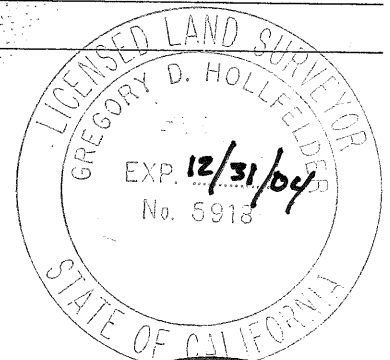
Identification and type of corner found: Evidence used to identify or procedure used to establish or reestablish the corner: THE MON. DESCRIBED BELOW WAS REFERENCED BY A SCRIBED "X" FOUND NEAR FRONT EDGE OF CONC. DWY ON VIA MEDIA AND SE EDGE OF CHIMNEY, FOR LINE ONLY, AT HOUSE 17064. SEE DRAW. NEXT PAGE.

A description of the physical condition of the monument as found and as set or reset: A PIN IN A CONCRETE POST IN A STANDARD MONUMENT WELL WAS FOUND IN GOOD CONDITION AT BEGINNING OF CURVE ON VIA MEDIA. THIS MONUMENT IS IN DANGER OF BEING DESTROYED DUE TO ROAD CONSTRUCTION.

SURVEYOR'S STATEMENT

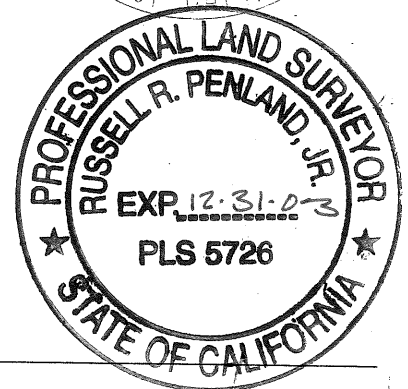
This Corner Record was prepared by me or under my direction in conformance with the Land Surveyors' Act on 8/21 / 20 01.

Signed Gregory D. Hollfelder L.S. or R.C.E. Number 5918

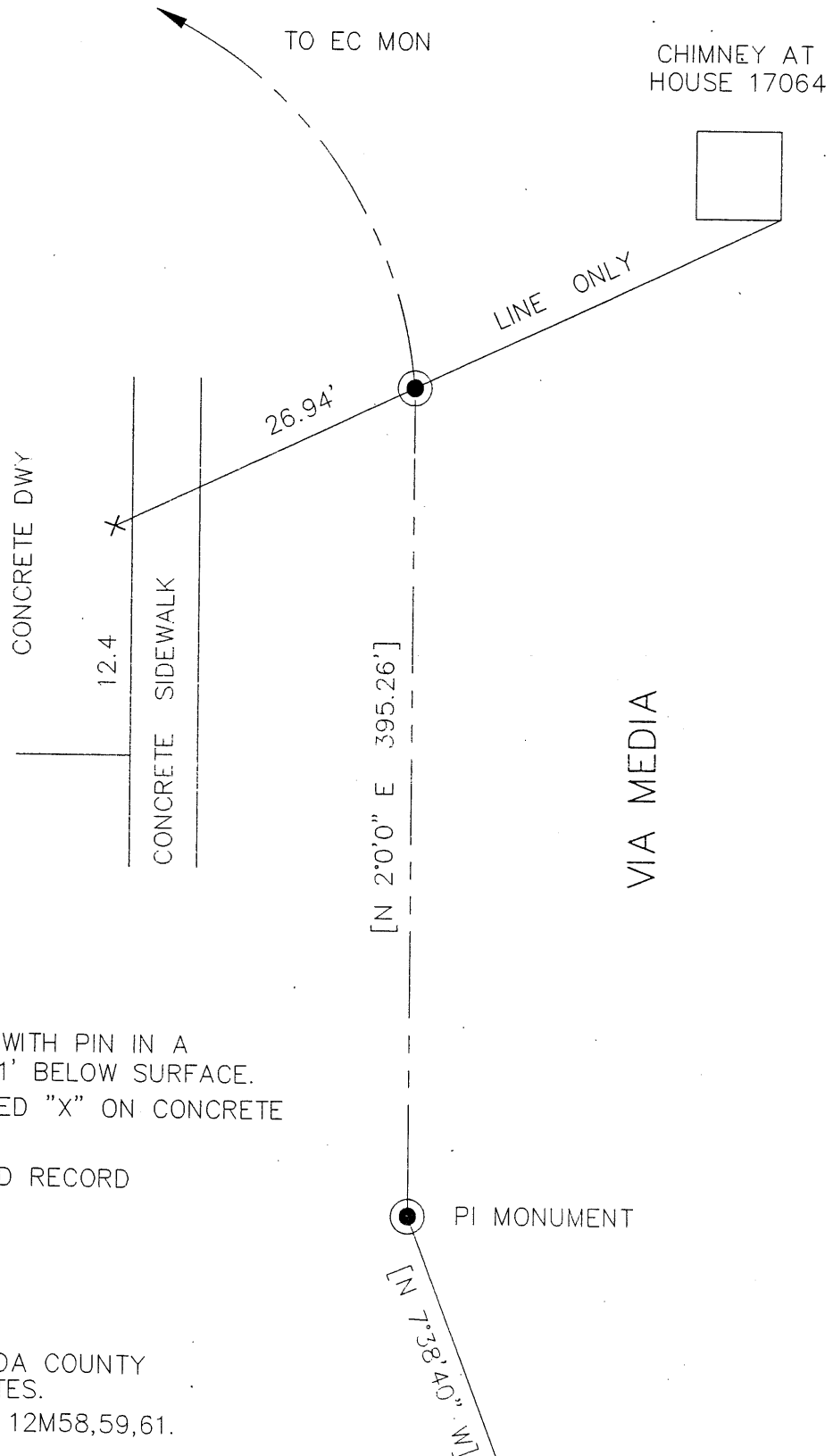
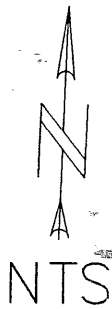
**COUNTY SURVEYOR'S STATEMENT**

This Corner Record was received 8-13 20 01 and examined and filed 10-06 20 03

Signed Russell R. Penland, Jr. Title County Surveyor



County Surveyor's Comment _____



LEGEND:

- = FOUND MON. WITH PIN IN A CONC. POST 1' BELOW SURFACE.
- X = FOUND SCRIBED "X" ON CONCRETE DRIVEWAY.
- [XX] = NON-VERIFIED RECORD DIMENSION.

REFERENCES: ALAMEDA COUNTY
MAP AND FIELD NOTES.
TRACT NO. 802, 12M58,59,61.
LL-2041-2.