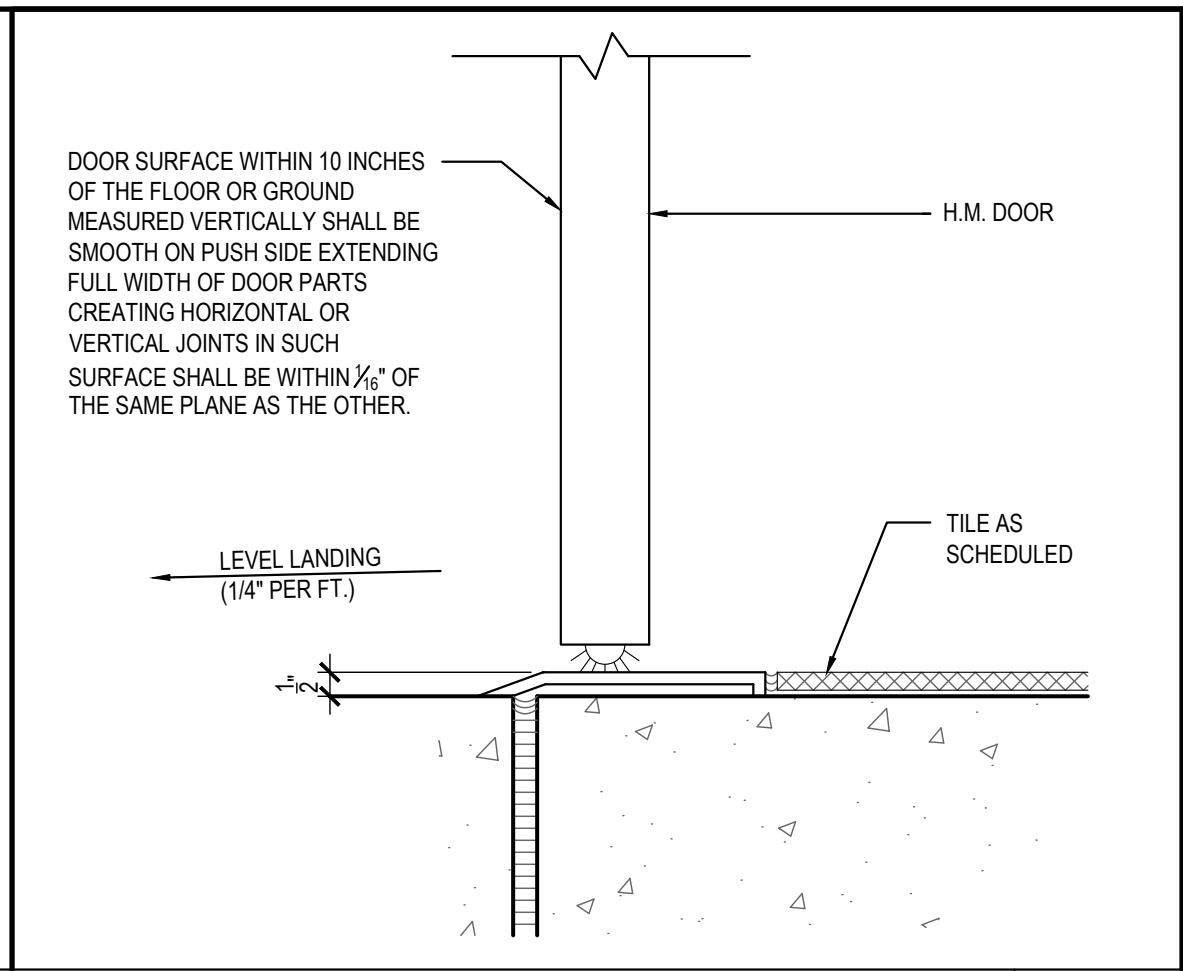


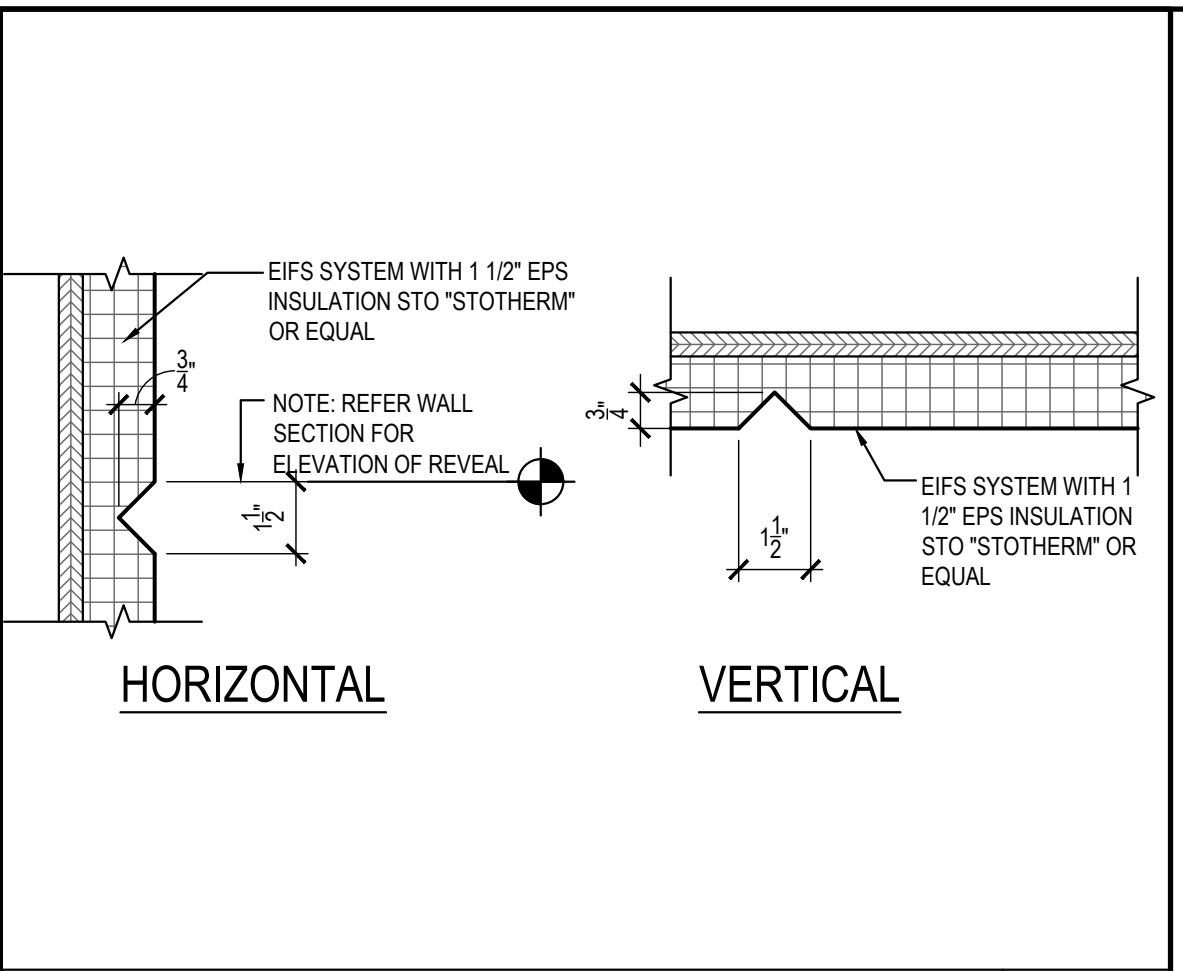
EIFS ACCENT BAND DETAIL 16

Scale= 1 1/2" = 1'-0" A-400



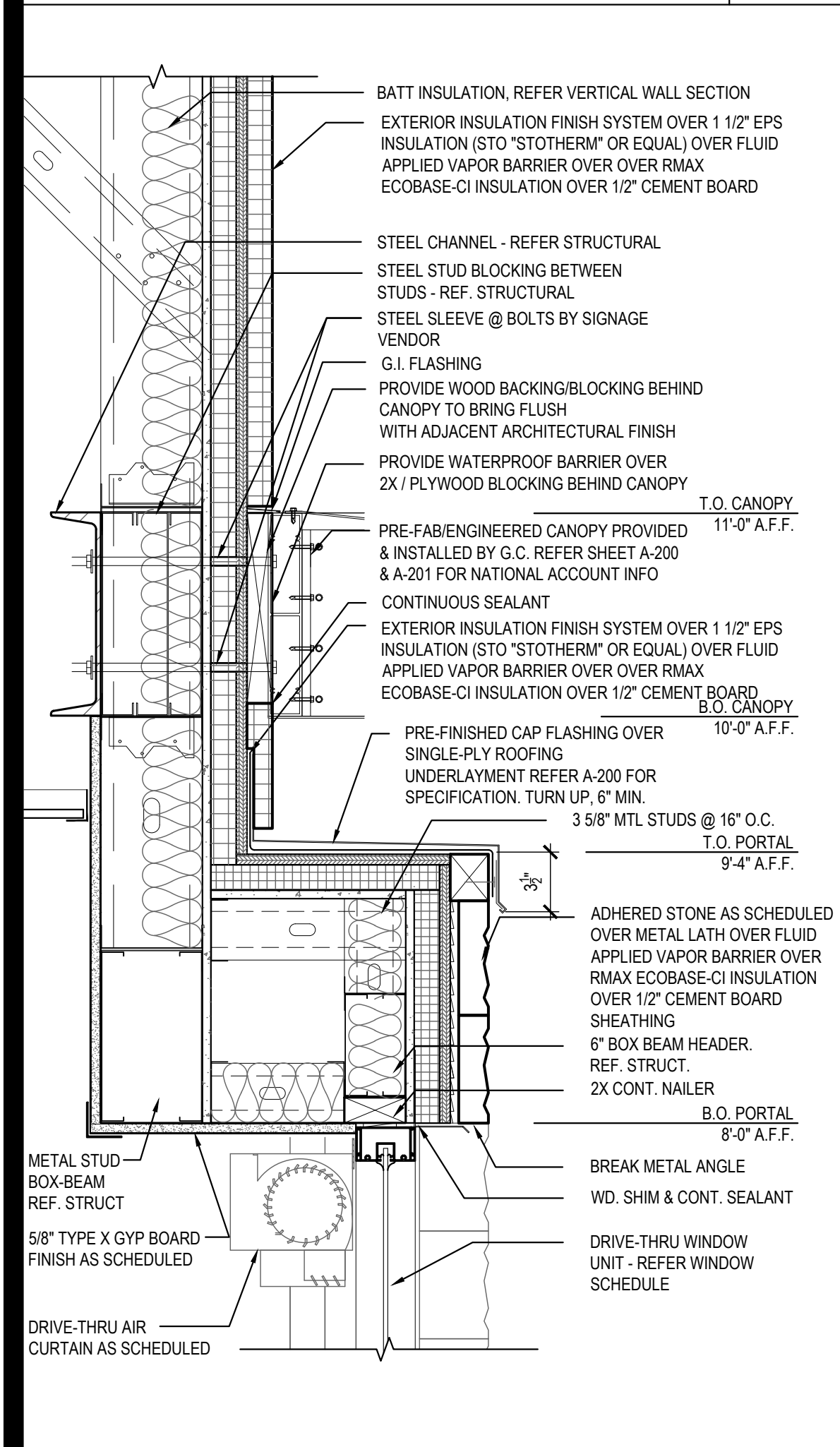
DOOR SILL DETAIL 13

Scale= 3" = 1'-0" A-400



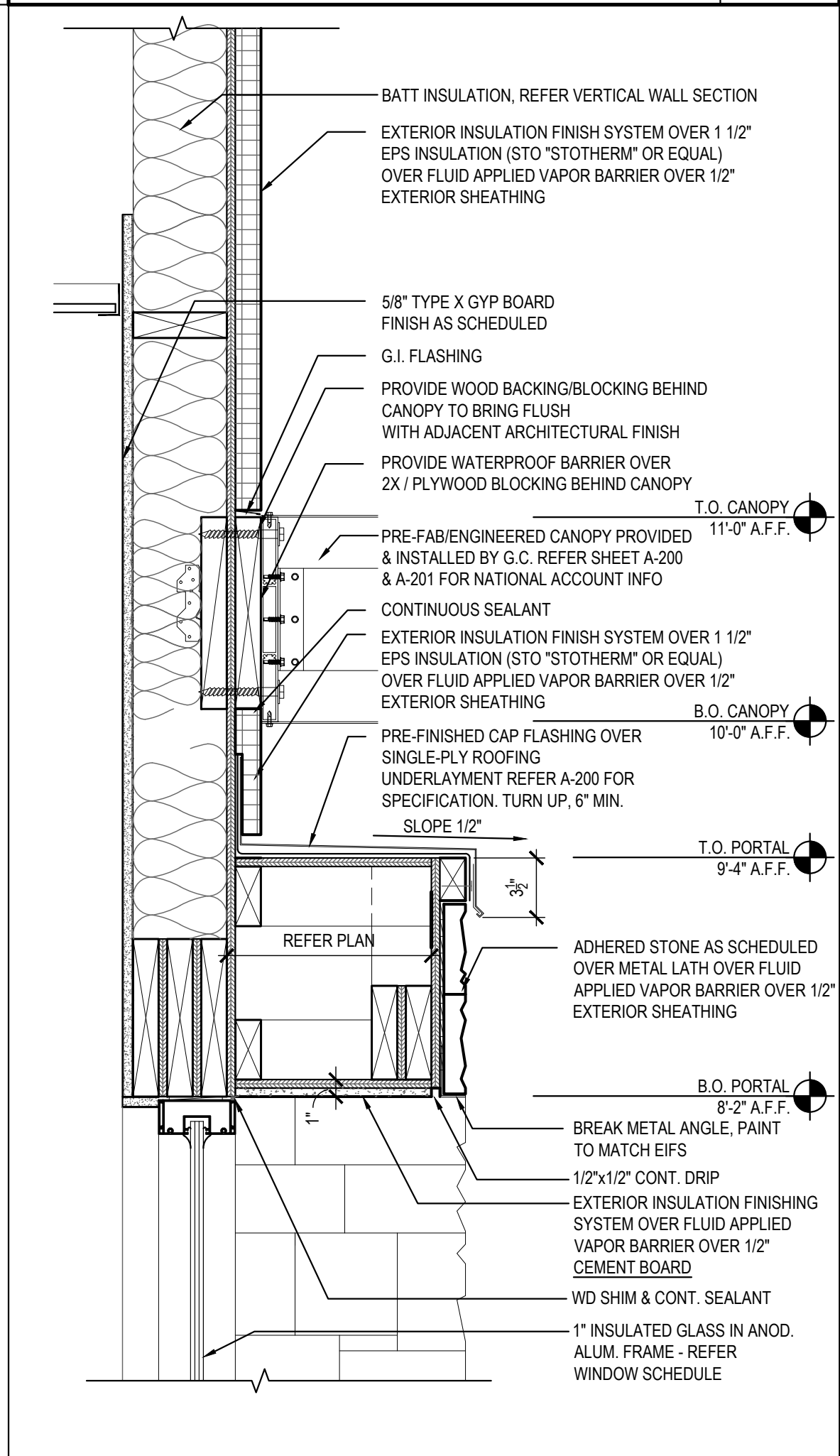
EIFS AESTHETIC REVEAL JOINT 10

Scale= 3" = 1'-0" A-400



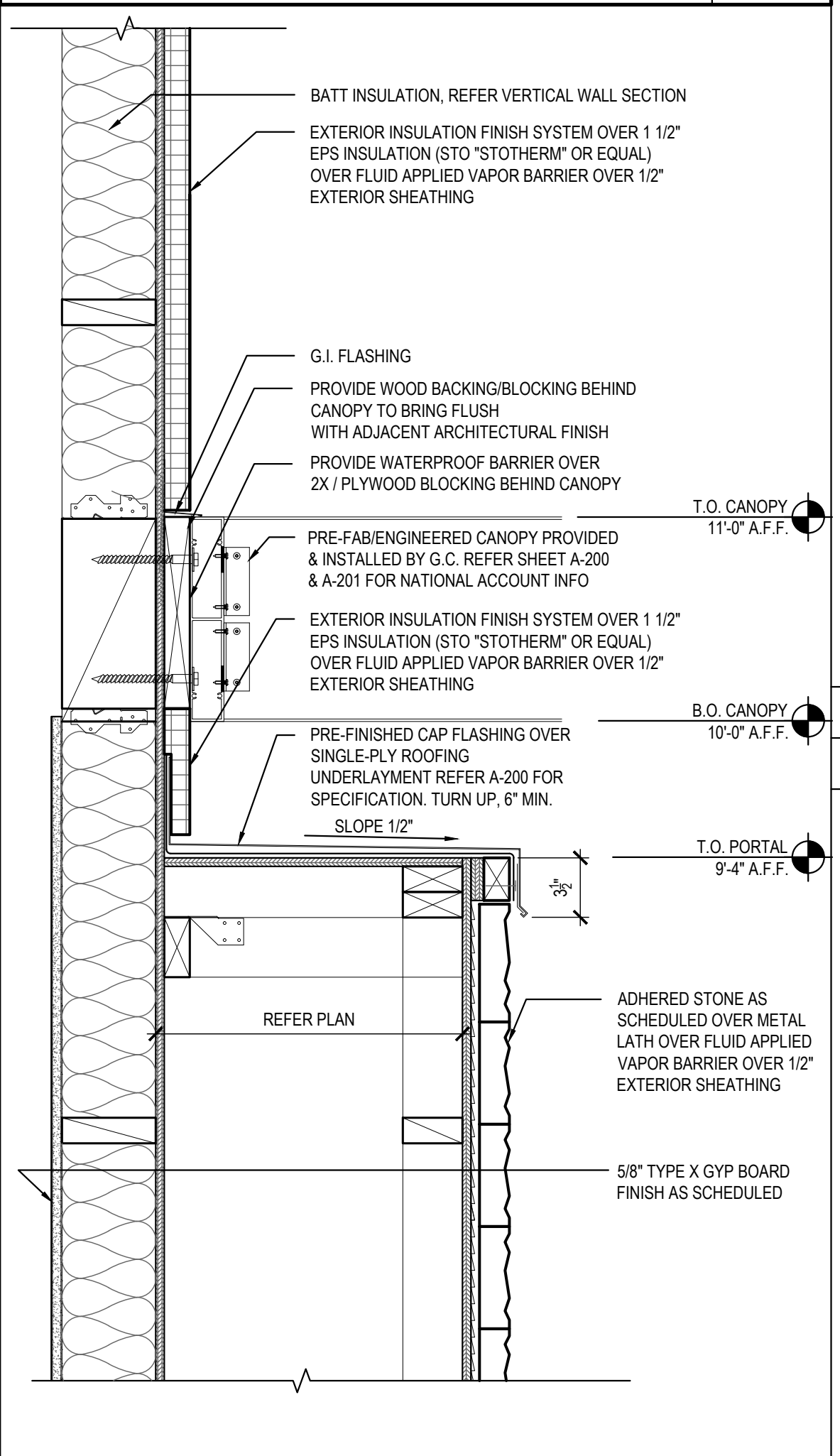
DRIVE-THRU HEAD DETAIL 15

Scale= 1 1/2" = 1'-0" A-400



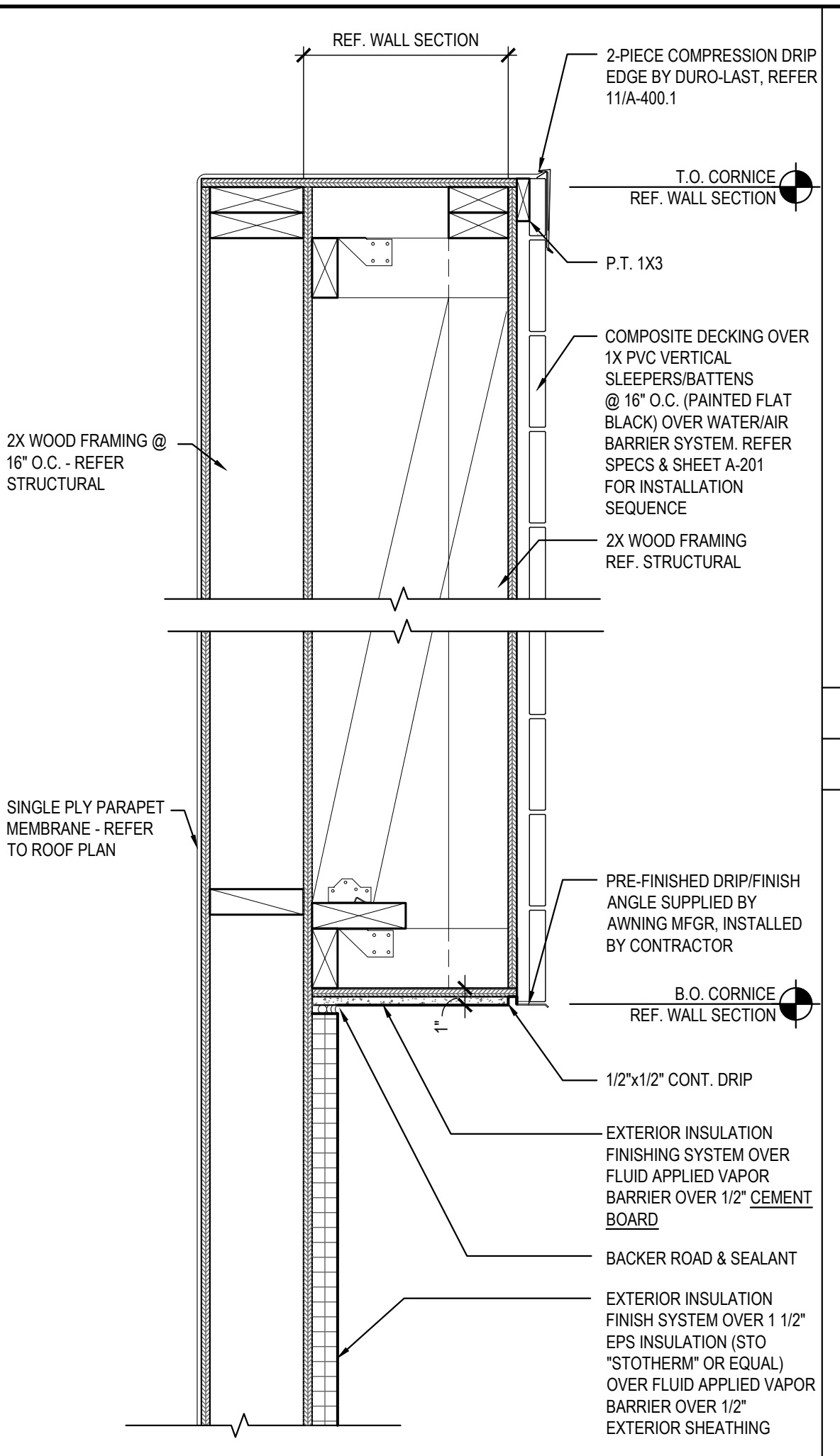
PORTAL DETAIL 12

Scale= 1 1/2" = 1'-0" A-400



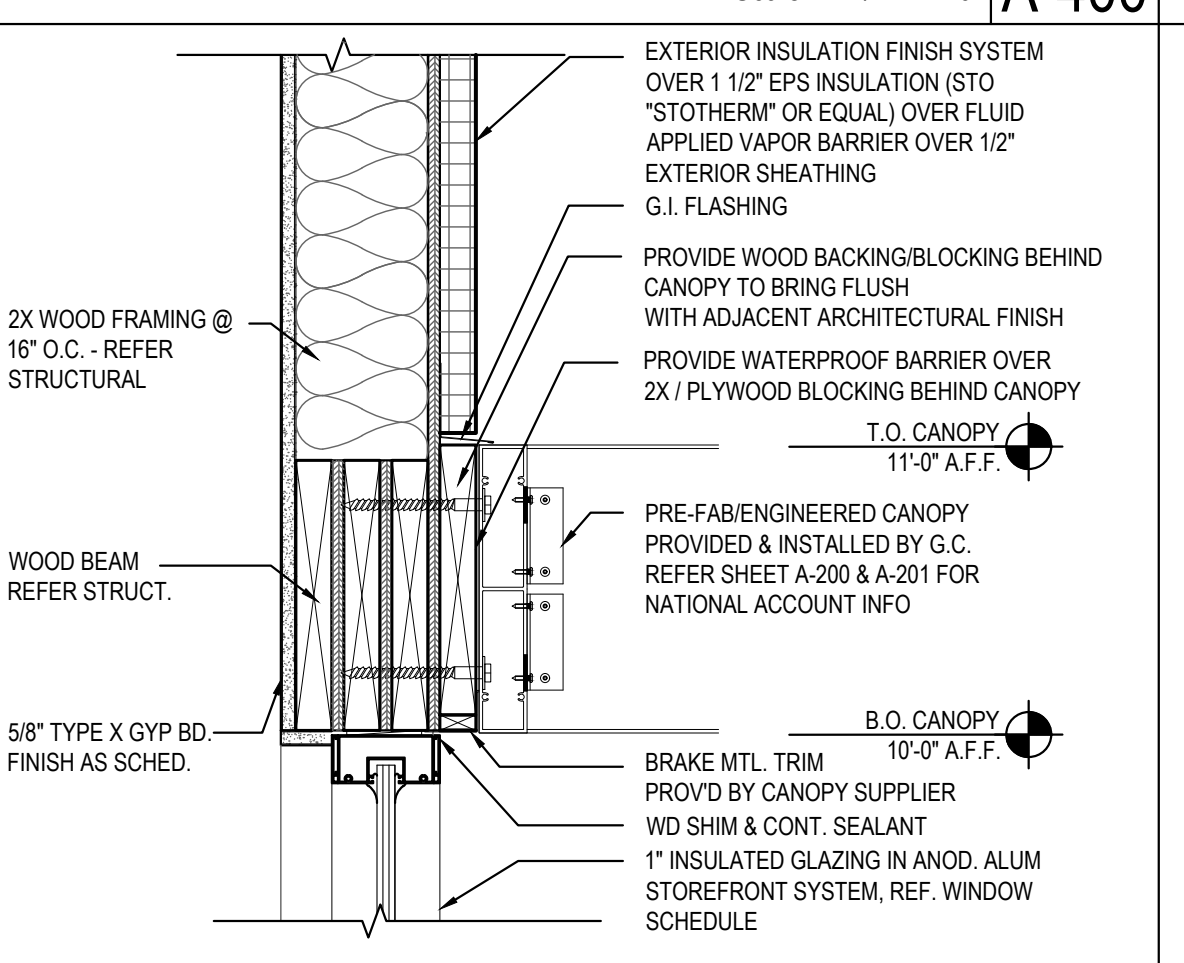
PILASTER DETAIL 09

Scale= 1 1/2" = 1'-0" A-400



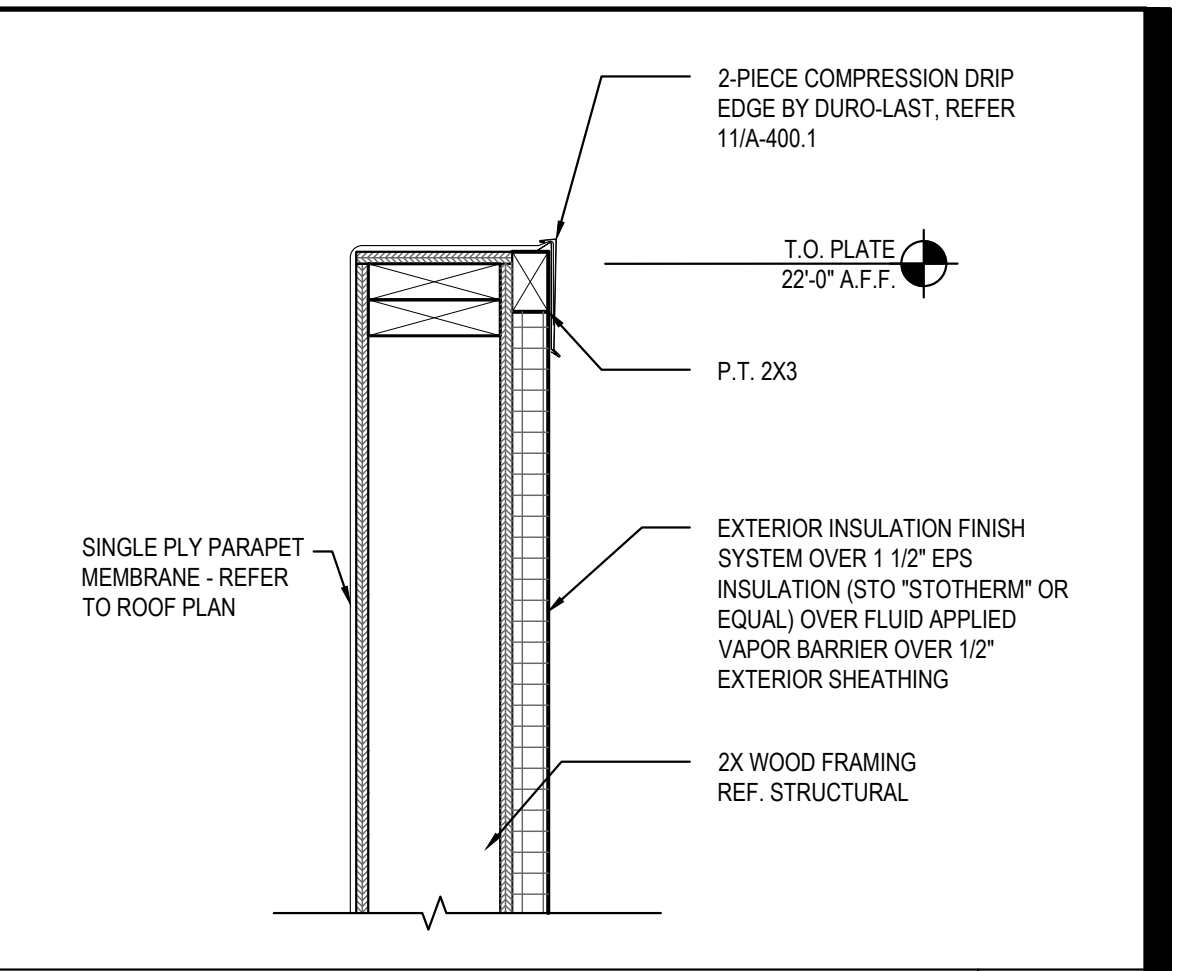
PARAPET/CORNICE DETAIL 07

Scale= 1 1/2" = 1'-0" A-400



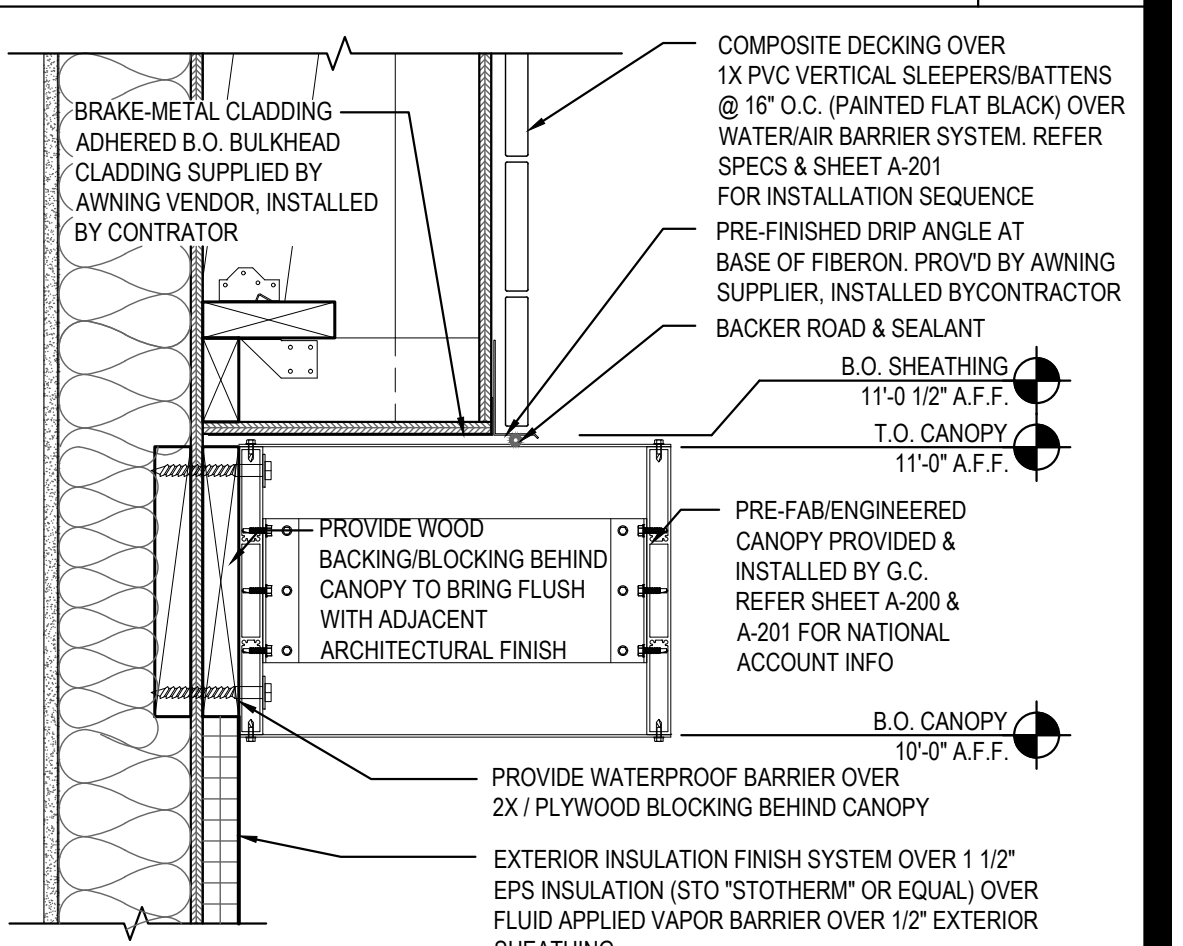
HEAD/CANOPY DETAIL 06

Scale= 1 1/2" = 1'-0" A-400



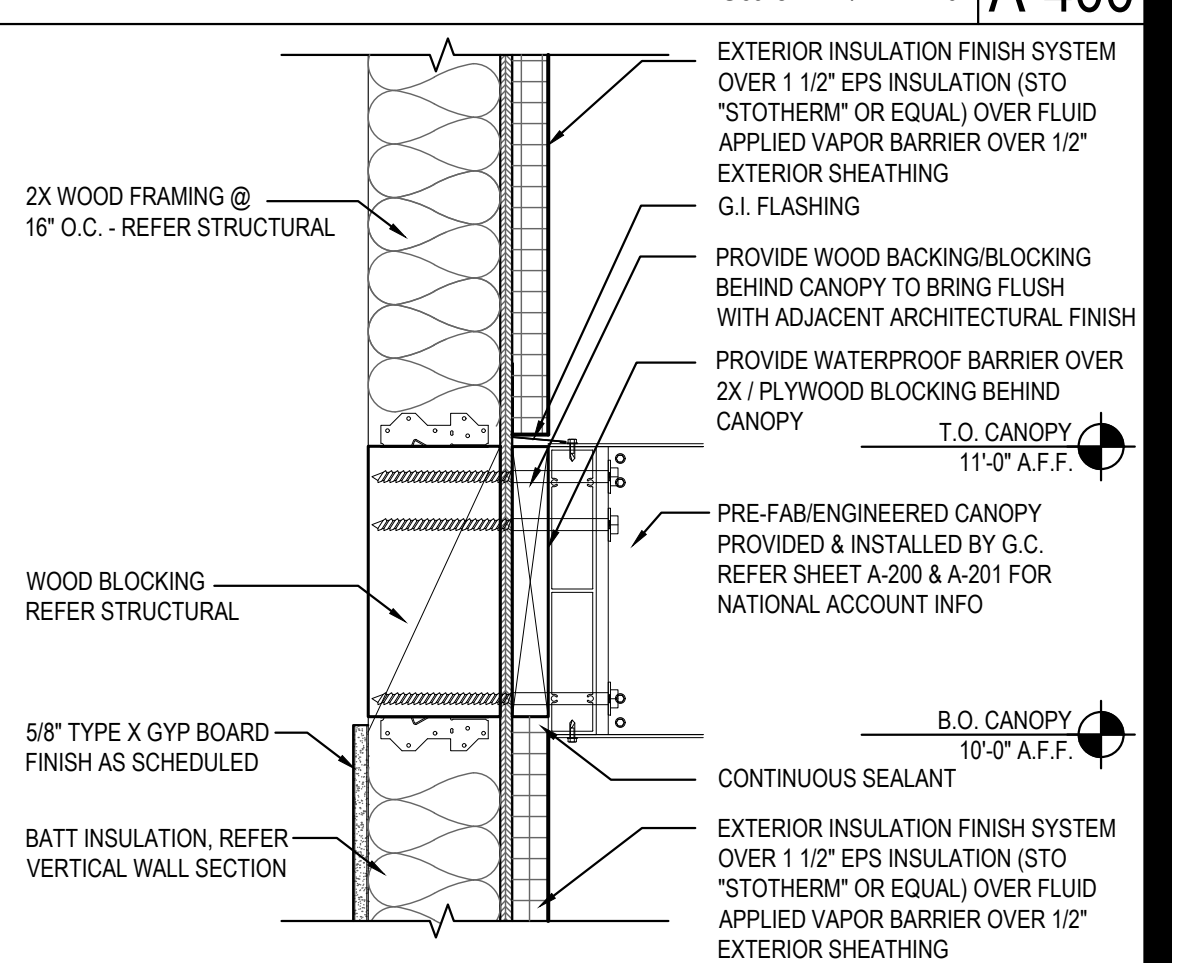
PARAPET DETAIL 04

Scale= 1 1/2" = 1'-0" A-400



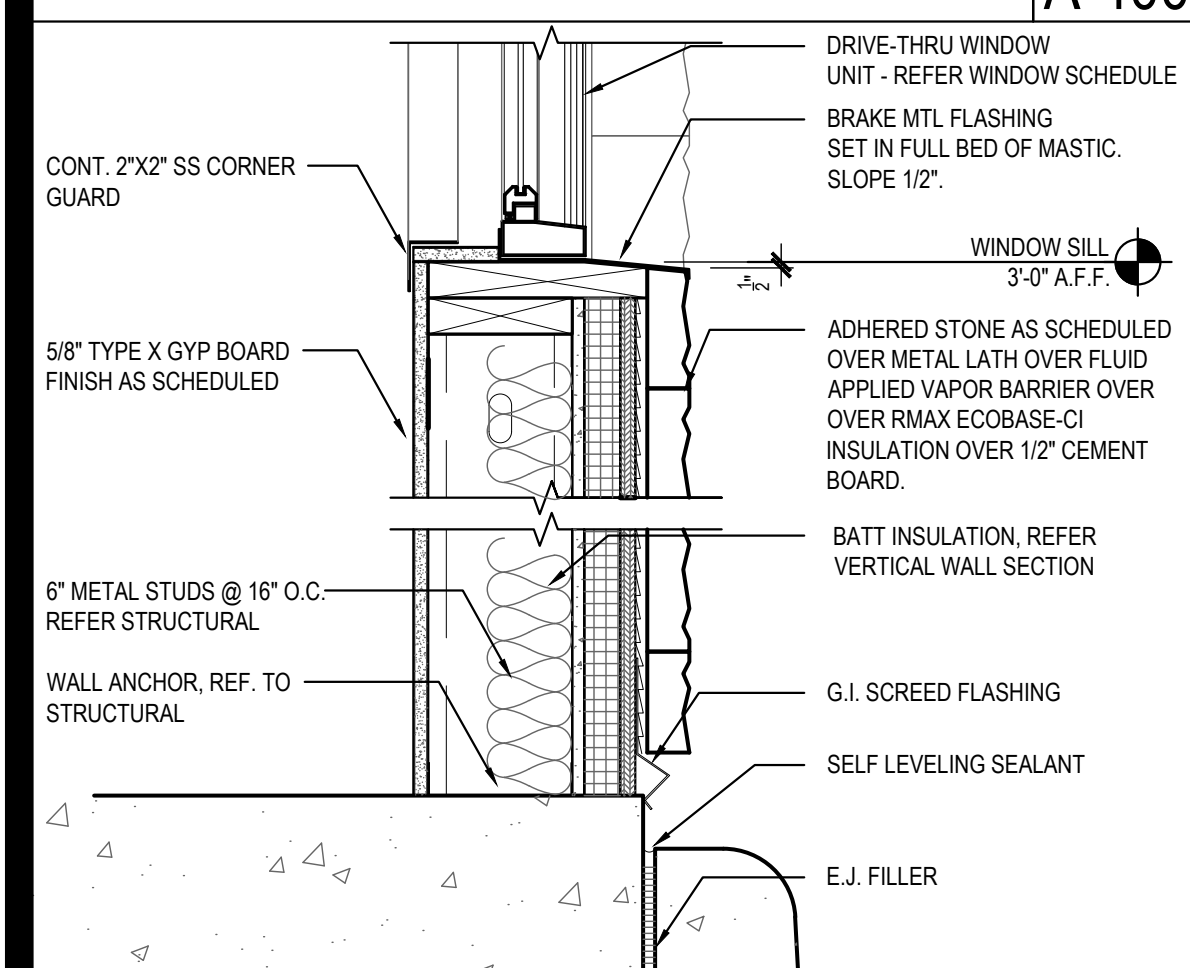
CANOPY DETAIL 03

Scale= 1 1/2" = 1'-0" A-400



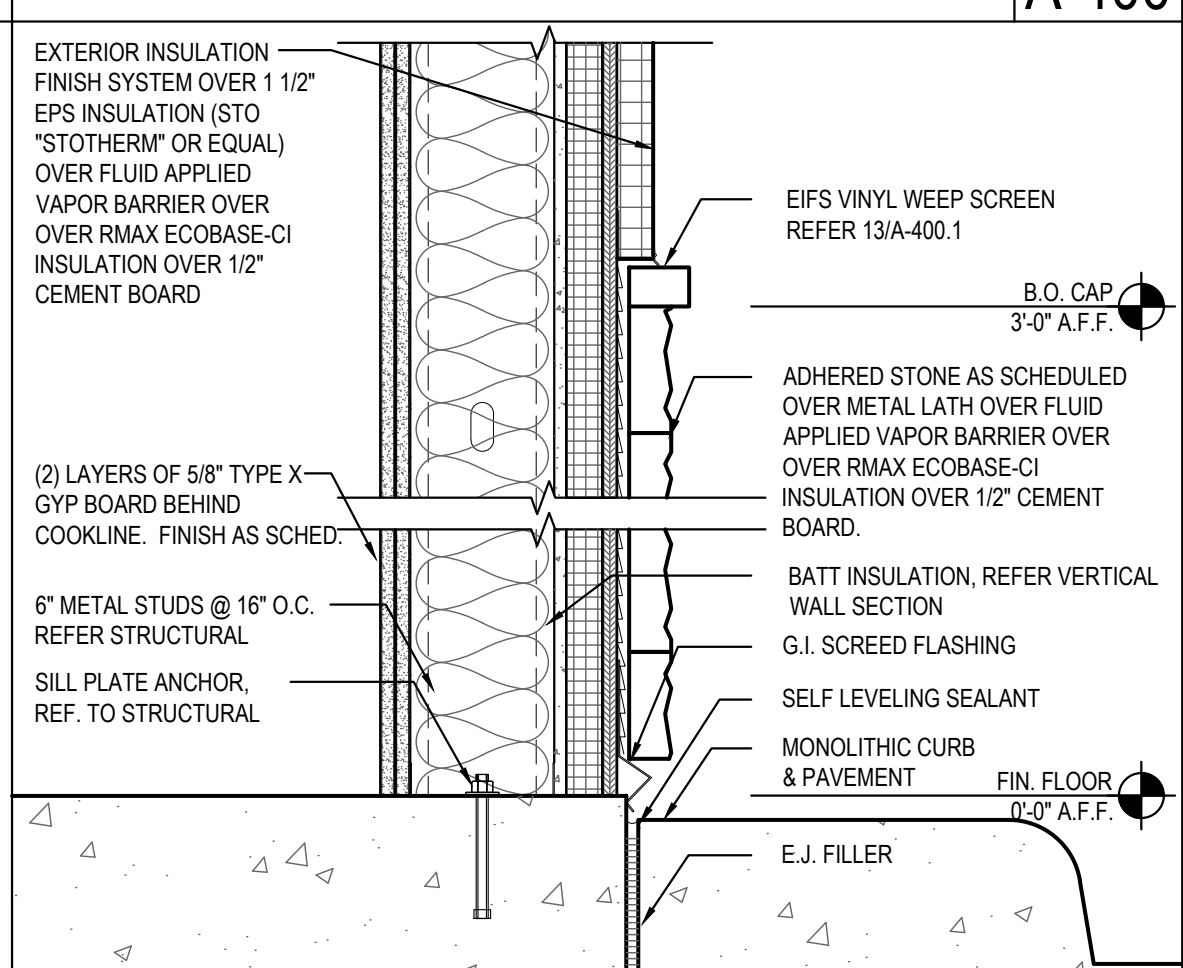
CANOPY DETAIL 02

Scale= 1 1/2" = 1'-0" A-400



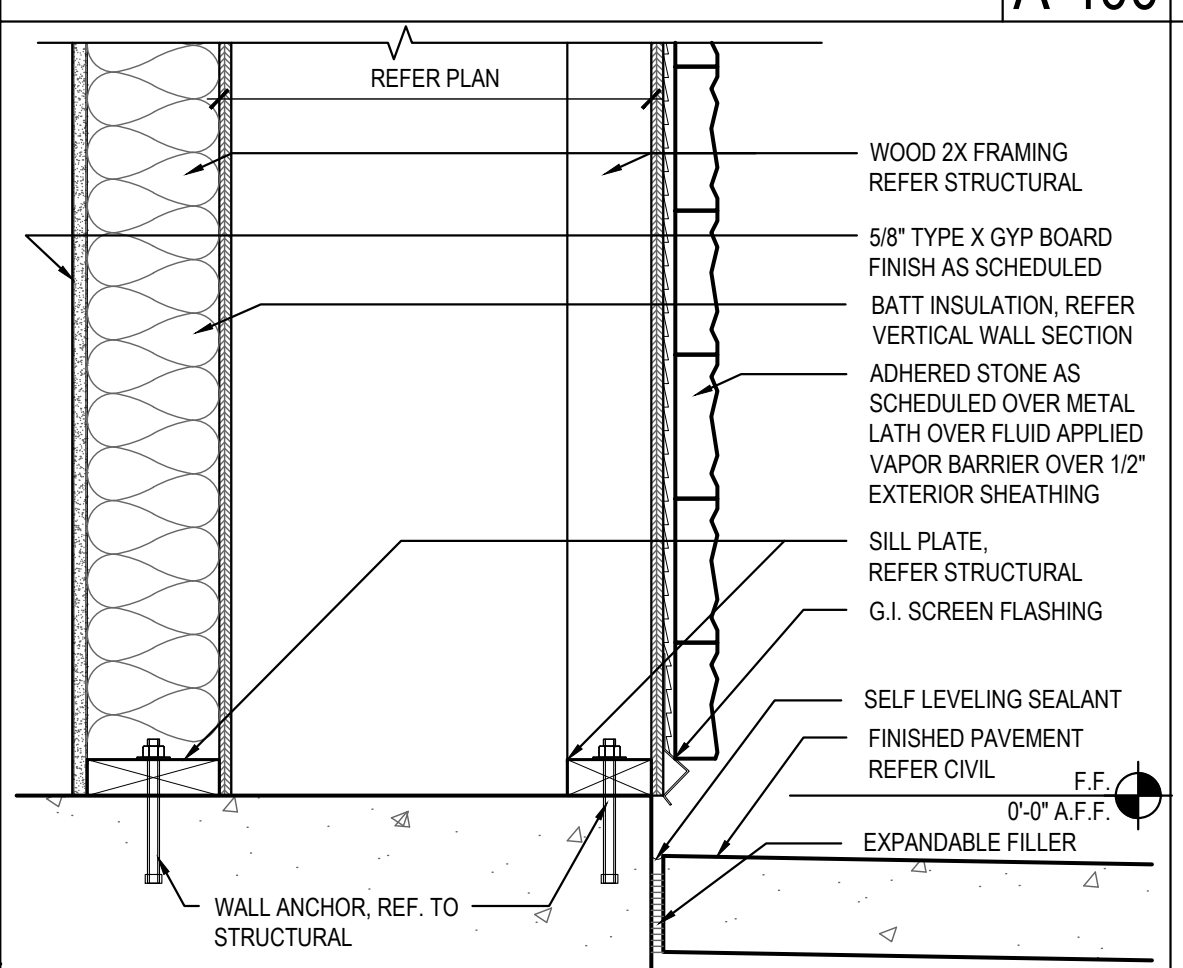
SILL DETAIL 14

Scale= 1 1/2" = 1'-0" A-400



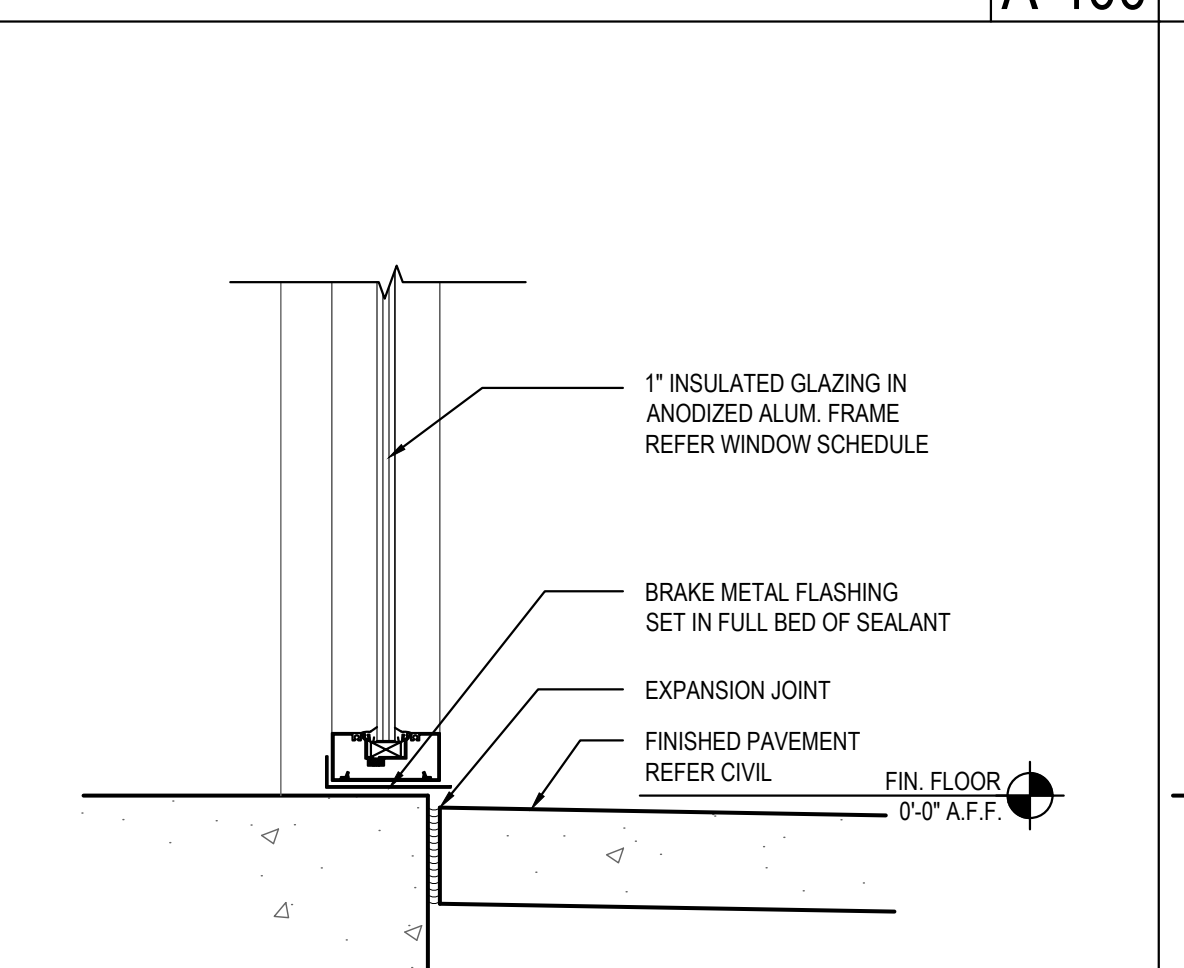
SILL DETAIL 11

Scale= 1 1/2" = 1'-0" A-400



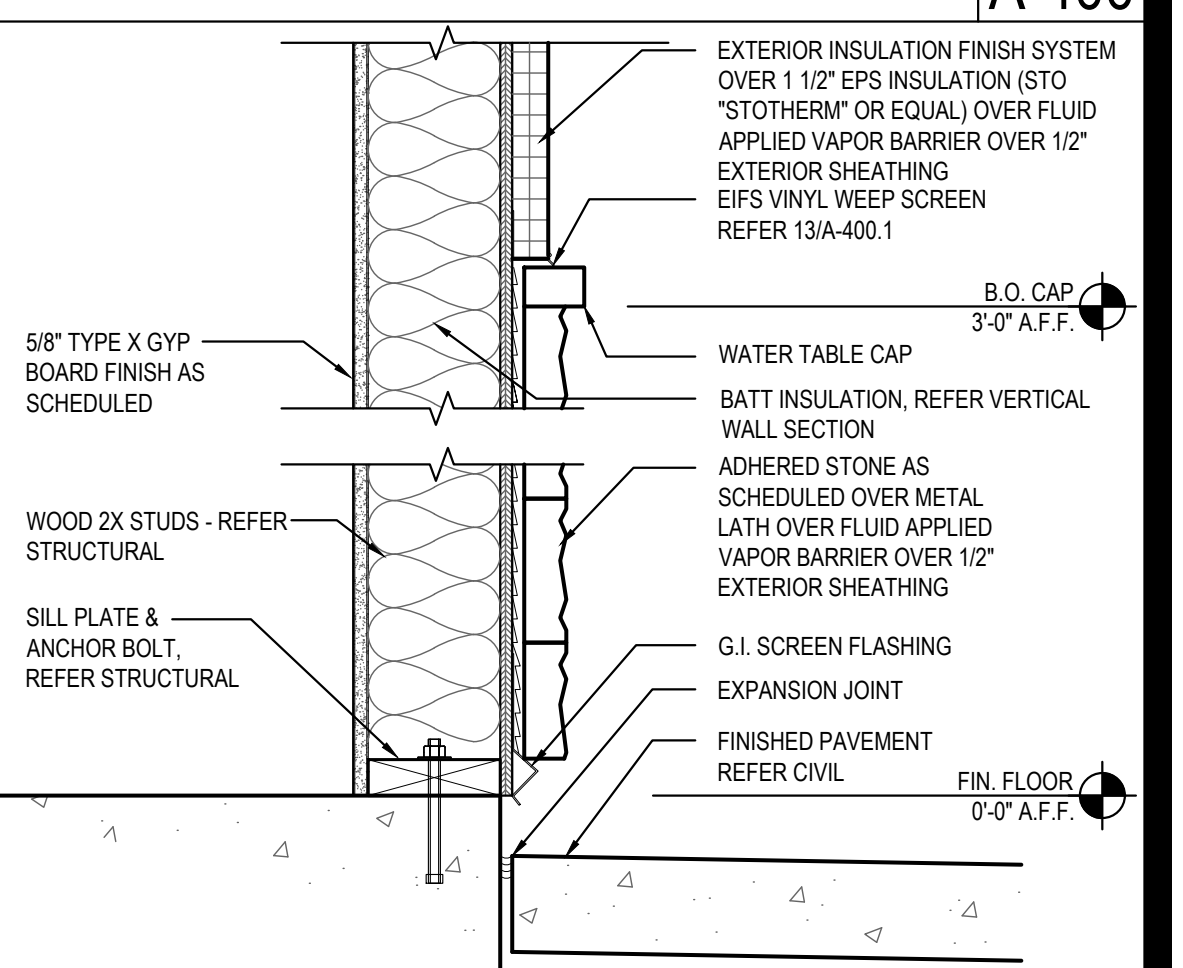
SILL DETAIL 08

Scale= 1 1/2" = 1'-0" A-400



SILL DETAIL 05

Scale= 1 1/2" = 1'-0" A-400



SILL DETAIL 01

Scale= 1 1/2" = 1'-0" A-400



PANDA EXPRESS, INC.
1683 Walnut Grove Ave.
Rosemead, California
91770
Telephone: 626.799.9898
Facsimile: 626.372.8288

All ideas, designs, arrangement and plans indicated or represented by this drawing are the property of Panda Express Inc. and were created for use on this specific project. None of these ideas, designs, arrangements or plans may be used by or disclosed to any person, firm, or corporation without the written permission of Panda Express Inc.

REVISIONS:

ISSUE DATE:

1	CHECK SET	12-15-20
2	PERMIT SET	12-18-20
3	BID SET	02-01-21
4	CONSTRUCTION SET	07-08-21

DRAWN BY: JO

PANDA PROJECT #: S8-21-D8043

ARCH PROJECT #: P7356.2



PANDA EXPRESS

TRUE WARM & WELCOME 2300
2599 S WOODLAND BLVD
DELAND, FL 32720

A-400

ARCHITECTURAL
DETAILS

TRUE WARM & WELCOME 2300 R1