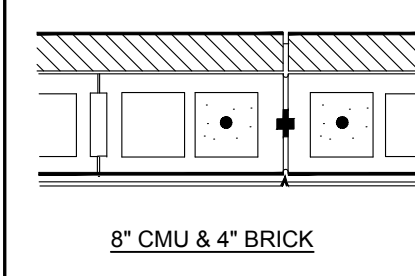
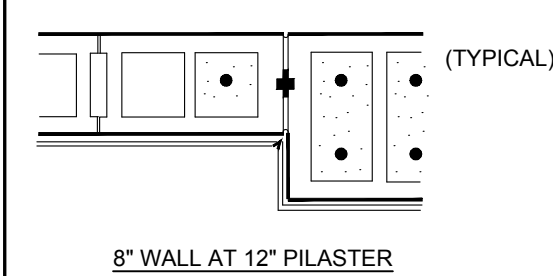
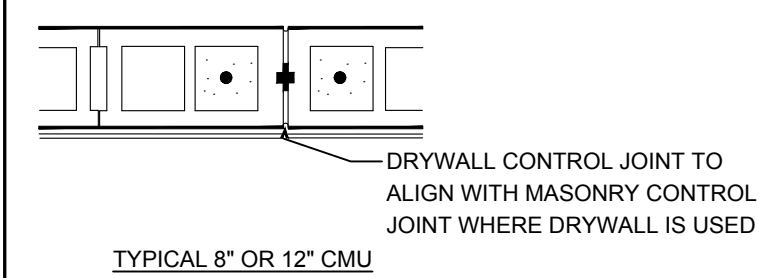
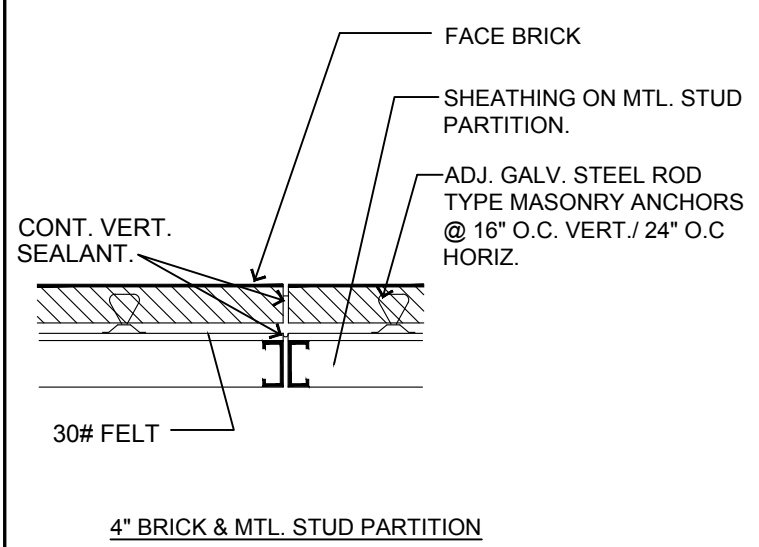
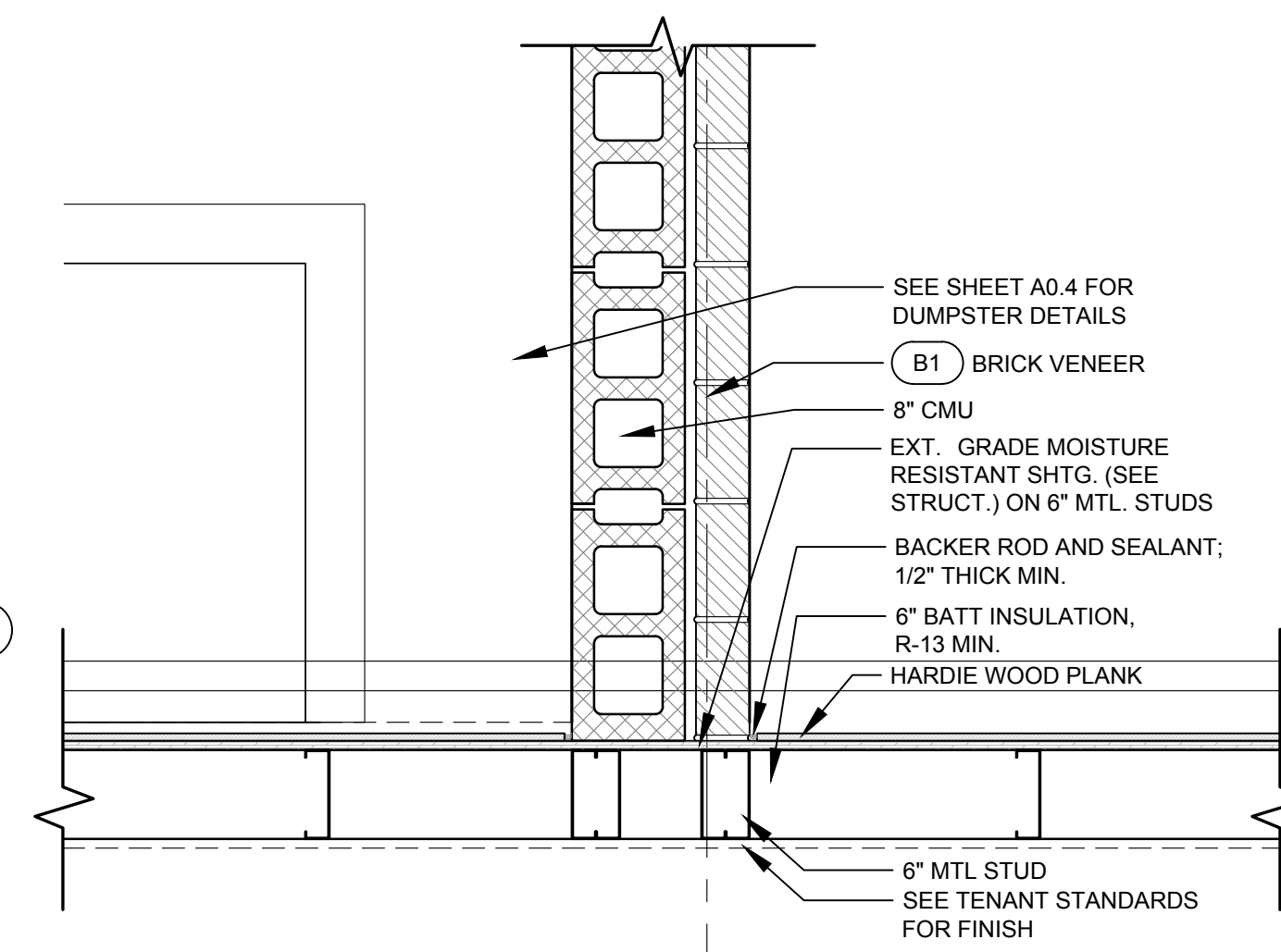


- KEY NOTES
- 1 CONTINUOUS FLEXIBLE SELF-SEALING THRU WALL FLASHING WITH PREFABRICATED ROPE WEEPS @ 24" O.C. TRIMMED FLUSH WITH MASONRY.
 - 2 PRE-FINISHED ALUMINUM STANDING SEAM COPING OVER WATERPROOF MEMBRANE PER SMACNA FIG. 3-3 TYPE 24 (STANDING SEAM W/ SNAP LOCK), SPACED NOT OVER 8'-0" O.C.
 - 3 J/BOX WITH CONDUIT FOR SIGNAGE. SEE ELECTRICAL. FIRE RETARDANT PLYWOOD BACK @ SIGNAGE AREA. SEE ELEVATIONS. TENANT SIGNAGE N.I.C.
 - 4 ALUMINUM-FRAMED FABRIC AWNING. PAINT FRAME BLACK. SEE MFR. FOR ATTACHMENT TO WALL. AWNINGS SHALL BE DESIGNED AND CONSTRUCTED TO WITHSTAND WIND AND OTHER LATERAL LOADING CONDITIONS. FRAMES SHALL BE OF METALLIC, NON-COMBUSTABLE MATERIAL. FABRIC SHALL MEET FIRE PROPAGATION PERFORMANCE CRITERIA.
 - 5 0.040 GA. CONT. SINGLE PIECE, PRE-FINISHED ALUMINUM FASCIA. BOTH ENDS SHALL HAVE CONTINUOUS CLEAT WITH MINIMUM OVERLAP OF 3/4". PROVIDE ANGLED CRIMPING AS SHOWN ON DETAIL 4/A5.0. BRONZE FINISH.
 - 6 PROVIDE CONTINUOUS DAMP PROOFING ON EXTERIOR SIDE OF BLOCK. SEE SPECIFICATIONS.
 - 7 6" Ø PVC SCHEDULE 40 DOWNSPOUT. PRIMARY DRAINS SHALL HAVE A CLEAN OUT LOCATED AT THE BASE OF THE VERTICAL DRAIN LINE 18" ABOVE FINISH GRADE.

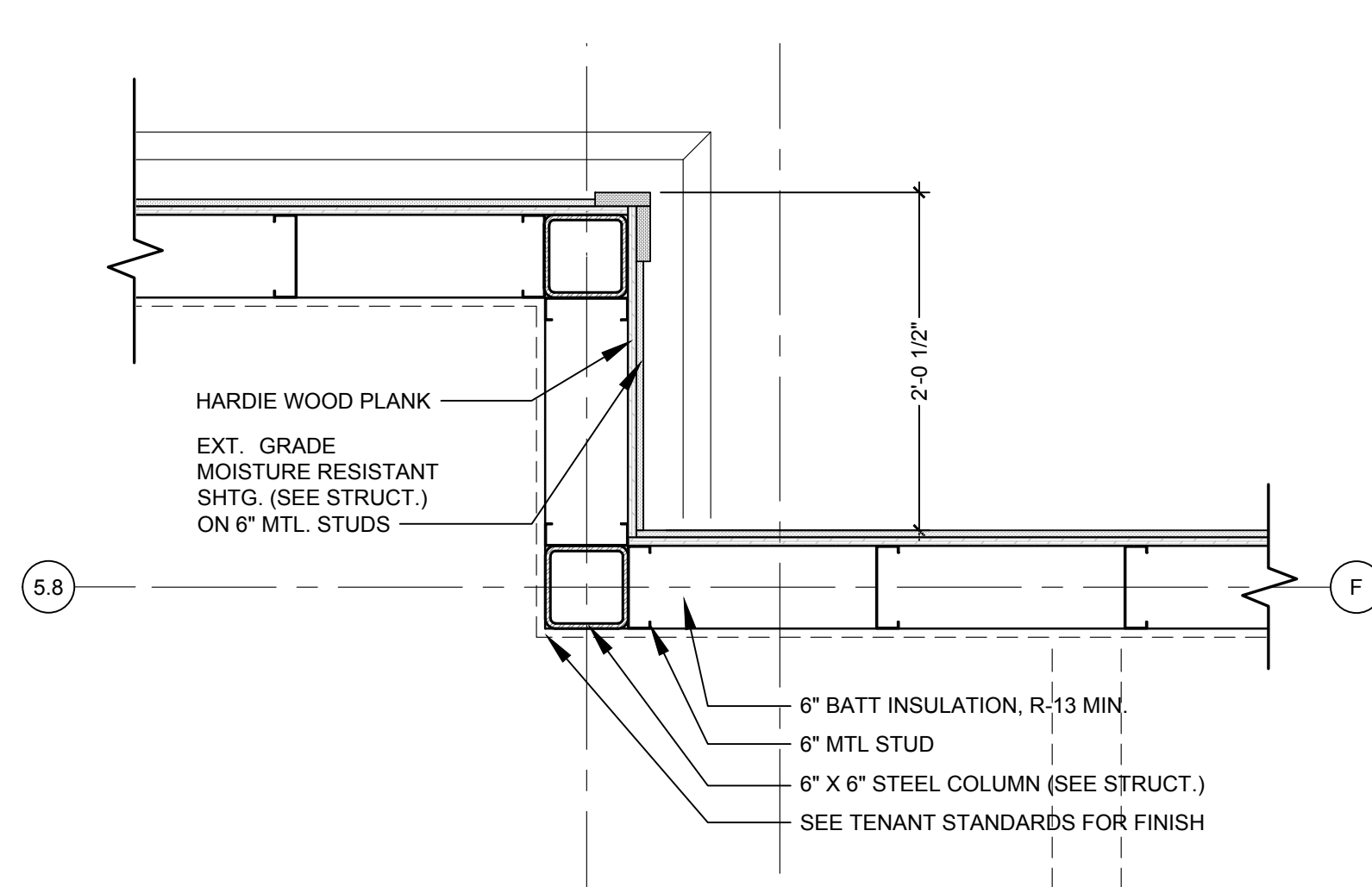
MASONRY CONTROL JOINTS



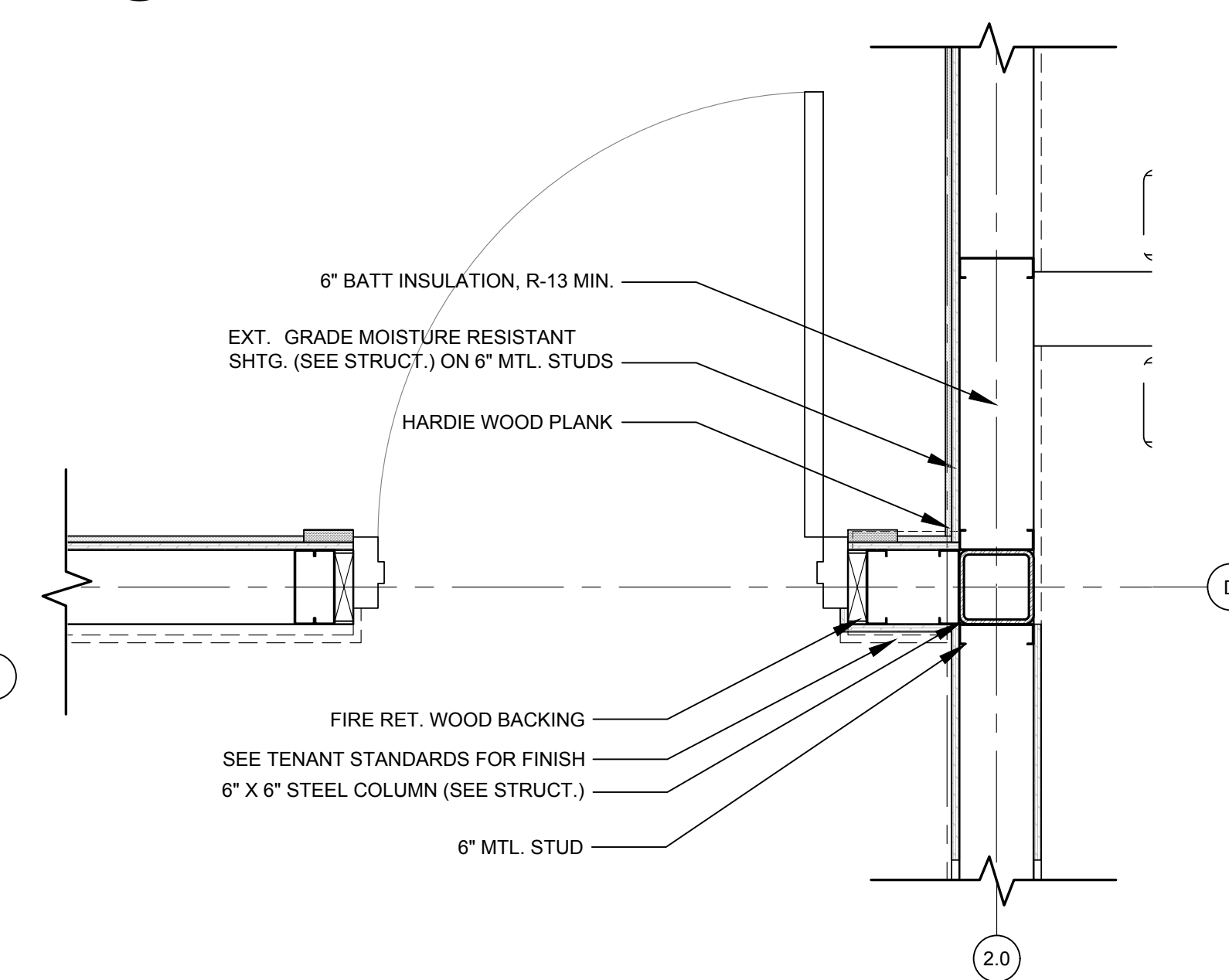
- GENERAL NOTES:
1. INDICATES "REGULAR RAPID CONTROL JOINT" BY DUR-O-WAL OR APPROVED EQUAL.
 2. BREAK HORIZONTAL REINFORCING AT CONT. JOINT
 3. USE BACKER ROD & CAULK CONTROL JOINT AT INTERIOR & EXTERIOR SURFACES.



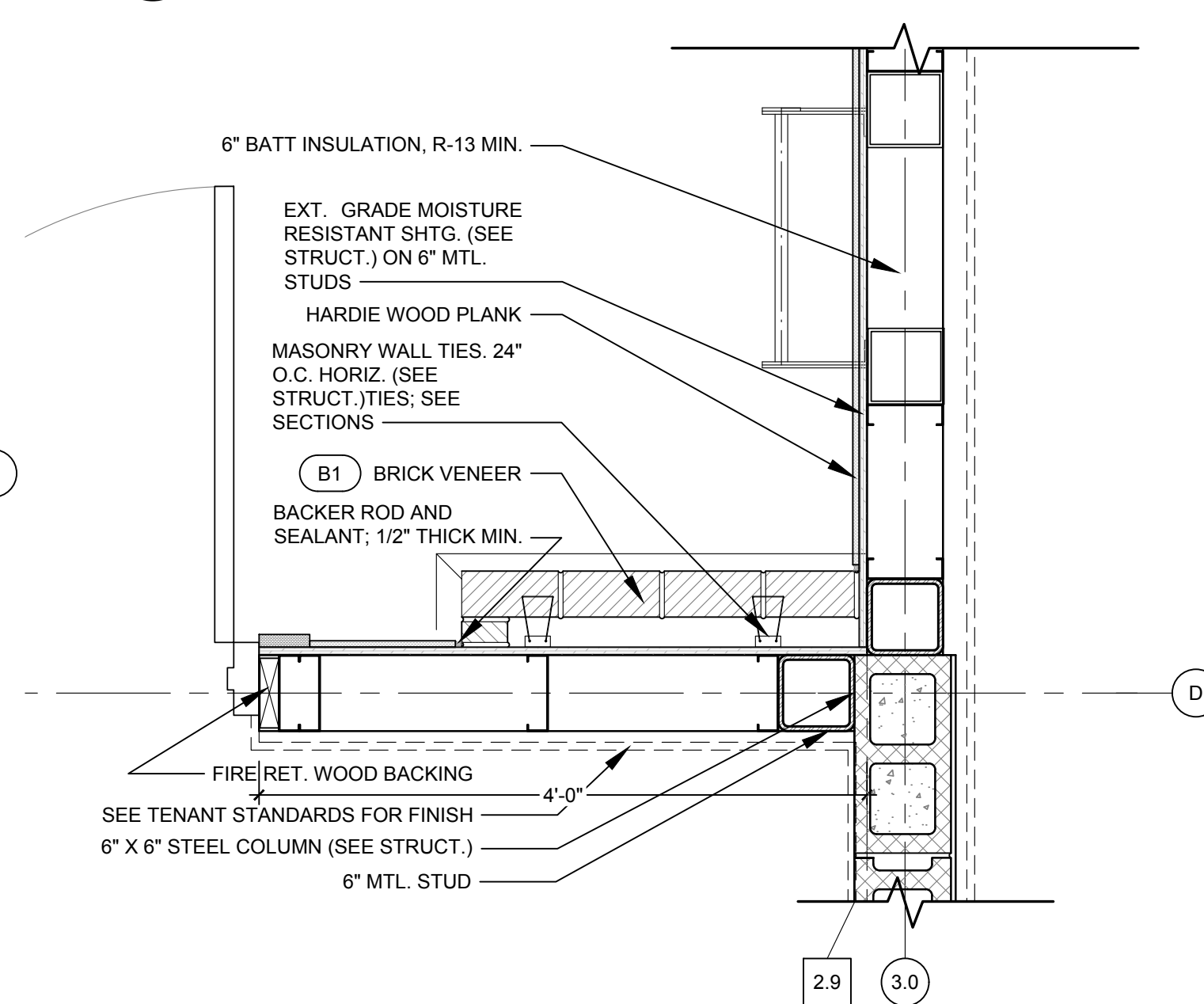
4 PLAN DETAIL
1" = 1'-0"



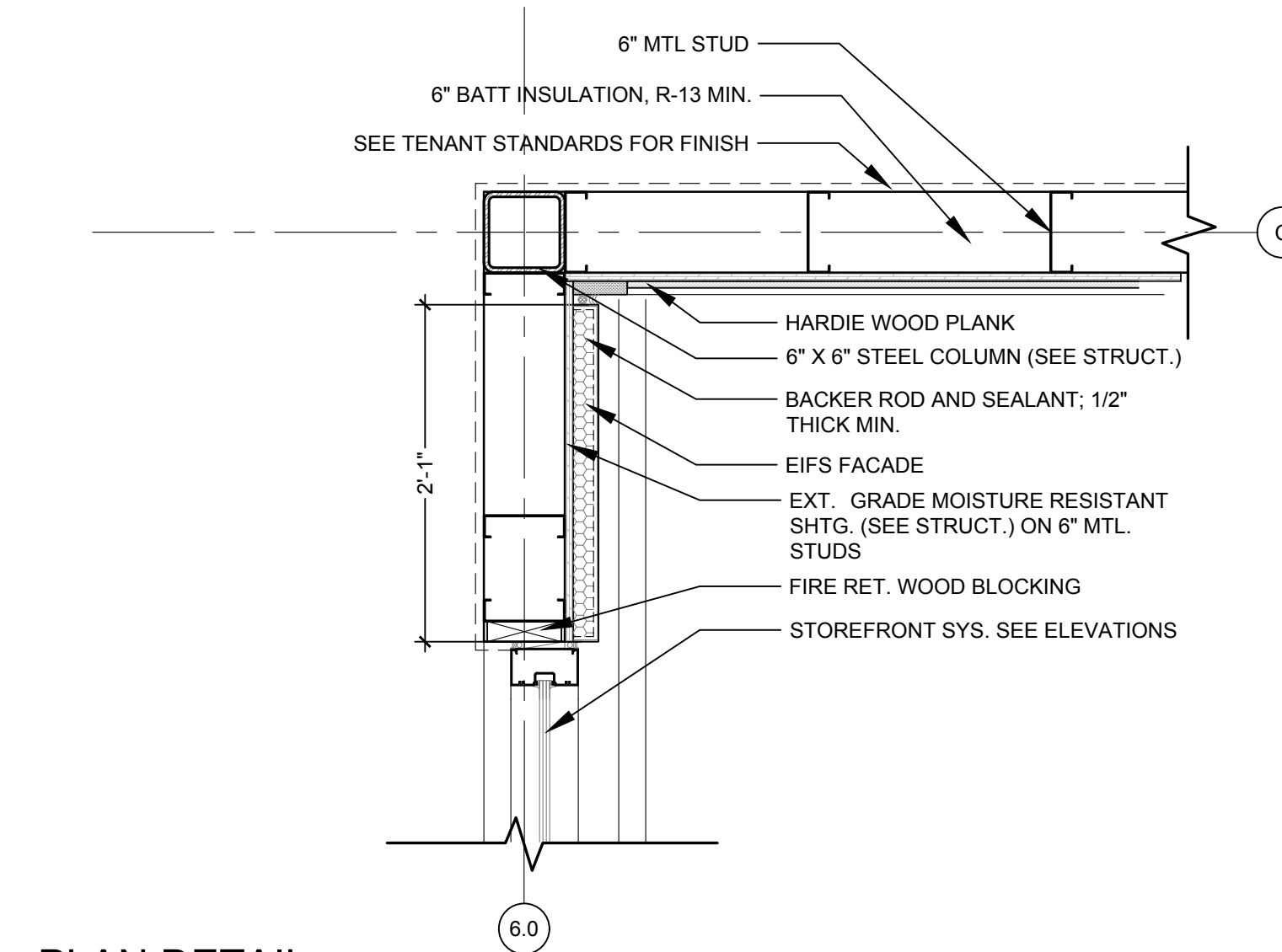
5 PLAN DETAIL
1" = 1'-0"



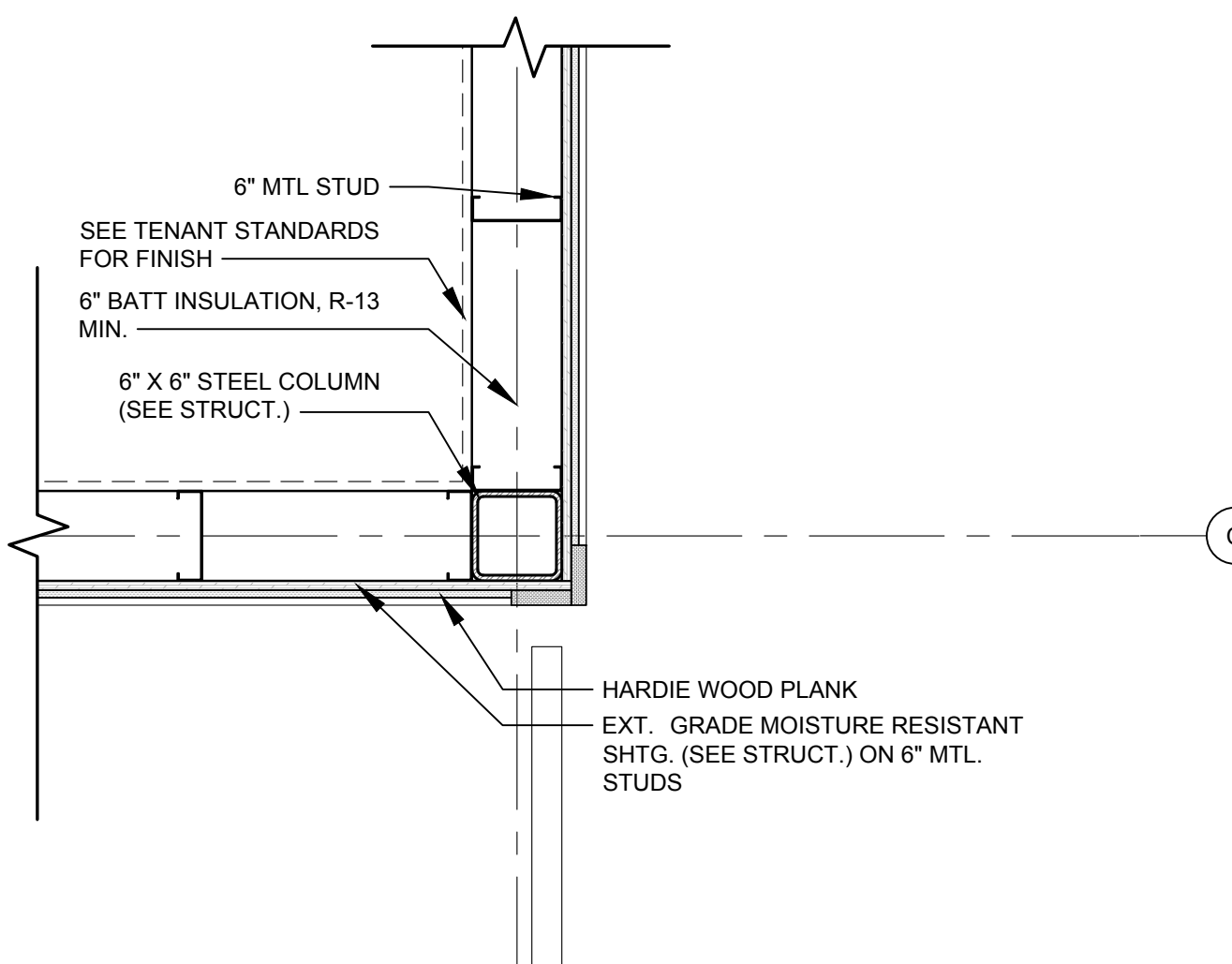
1 PLAN DETAIL
1" = 1'-0"



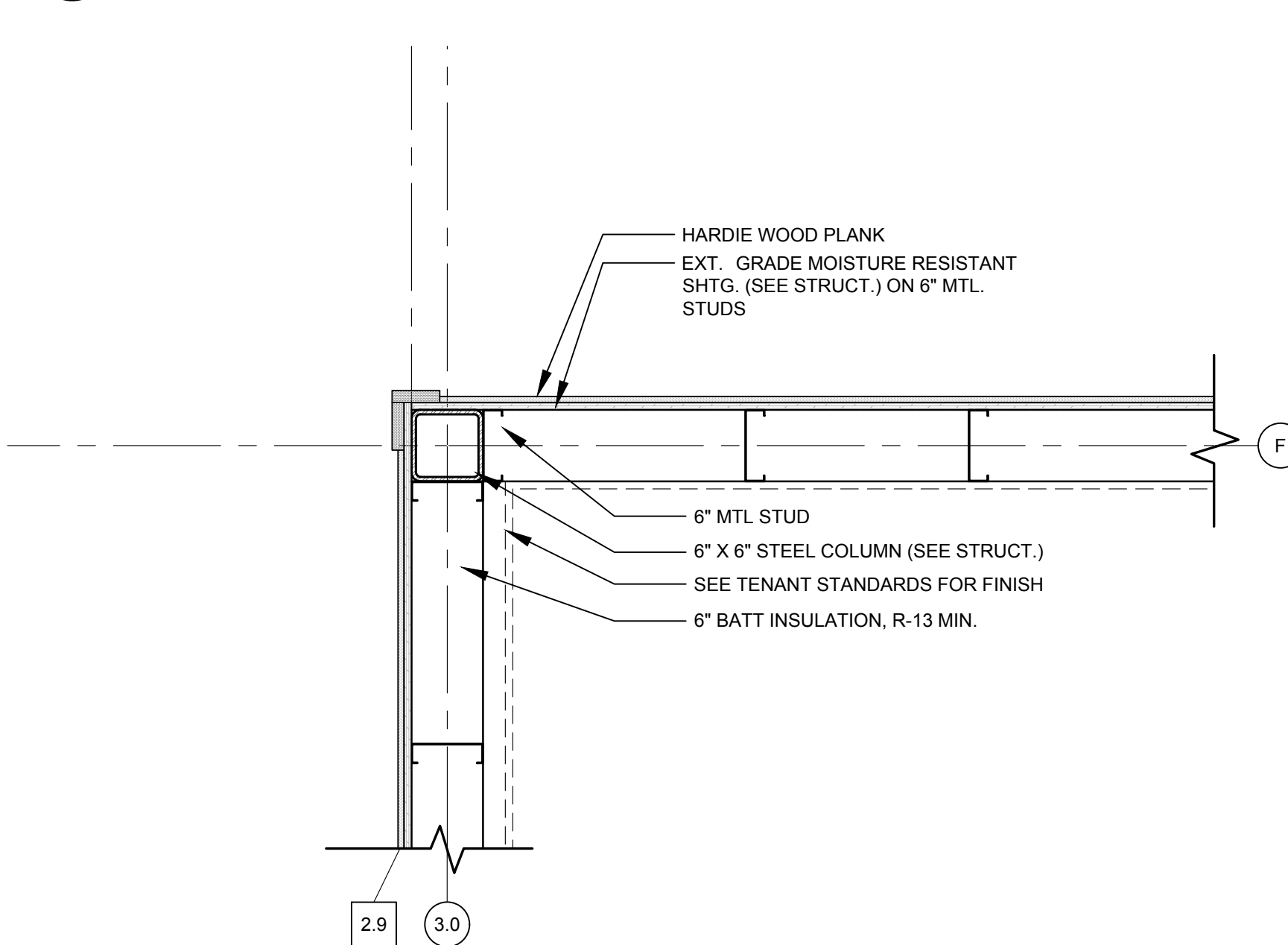
2 PLAN DETAIL
1" = 1'-0"



7 PLAN DETAIL
1" = 1'-0"



6 PLAN DETAIL
1" = 1'-0"



3 PLAN DETAIL
1" = 1'-0"

PLAN DETAILS

Sheet No.

A6.3