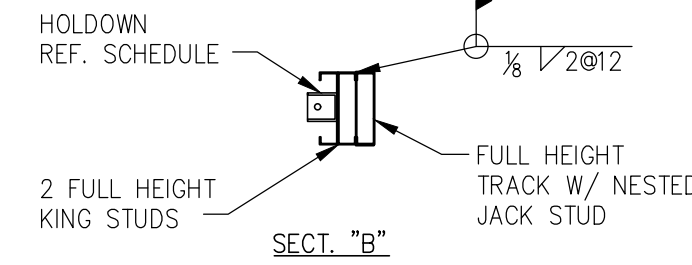
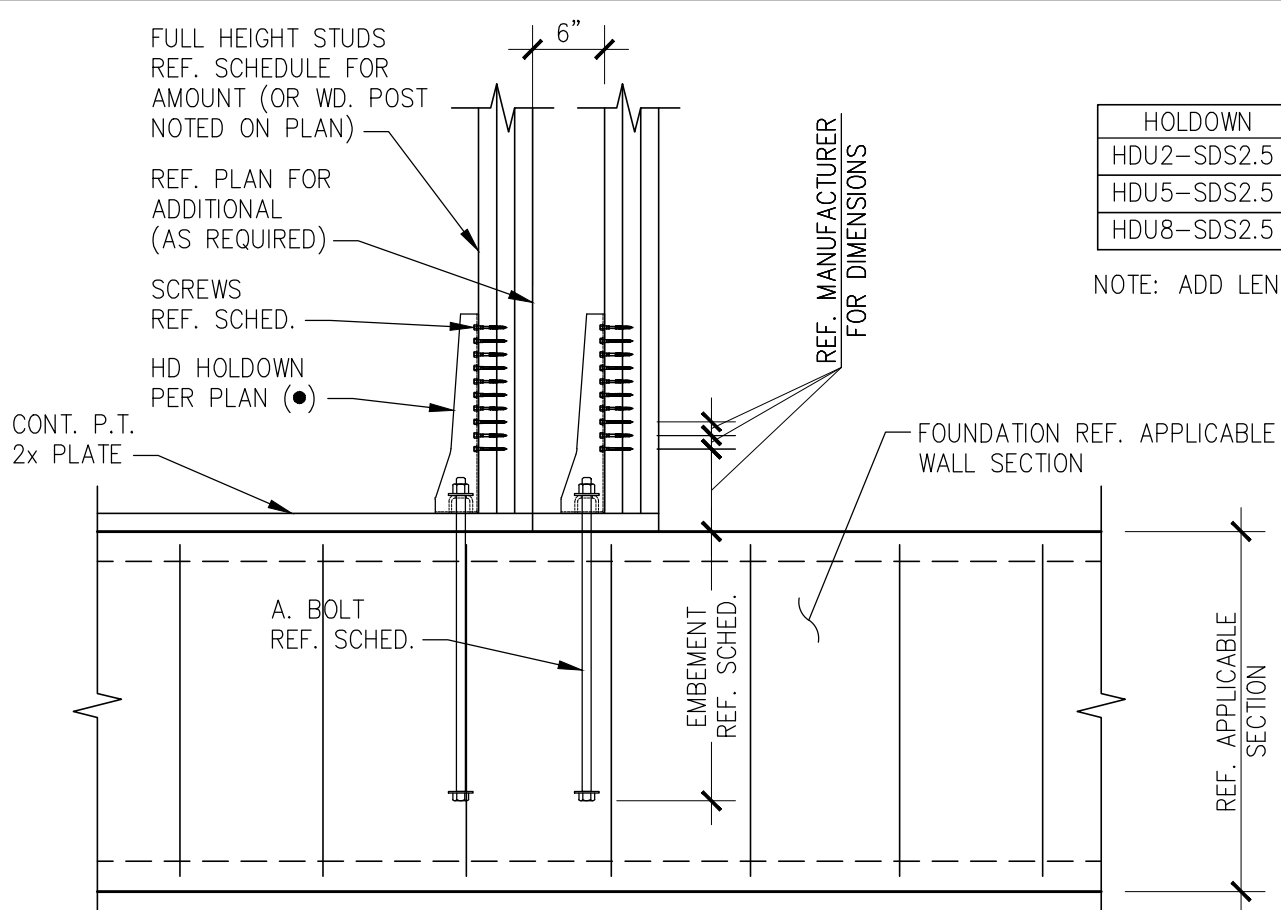
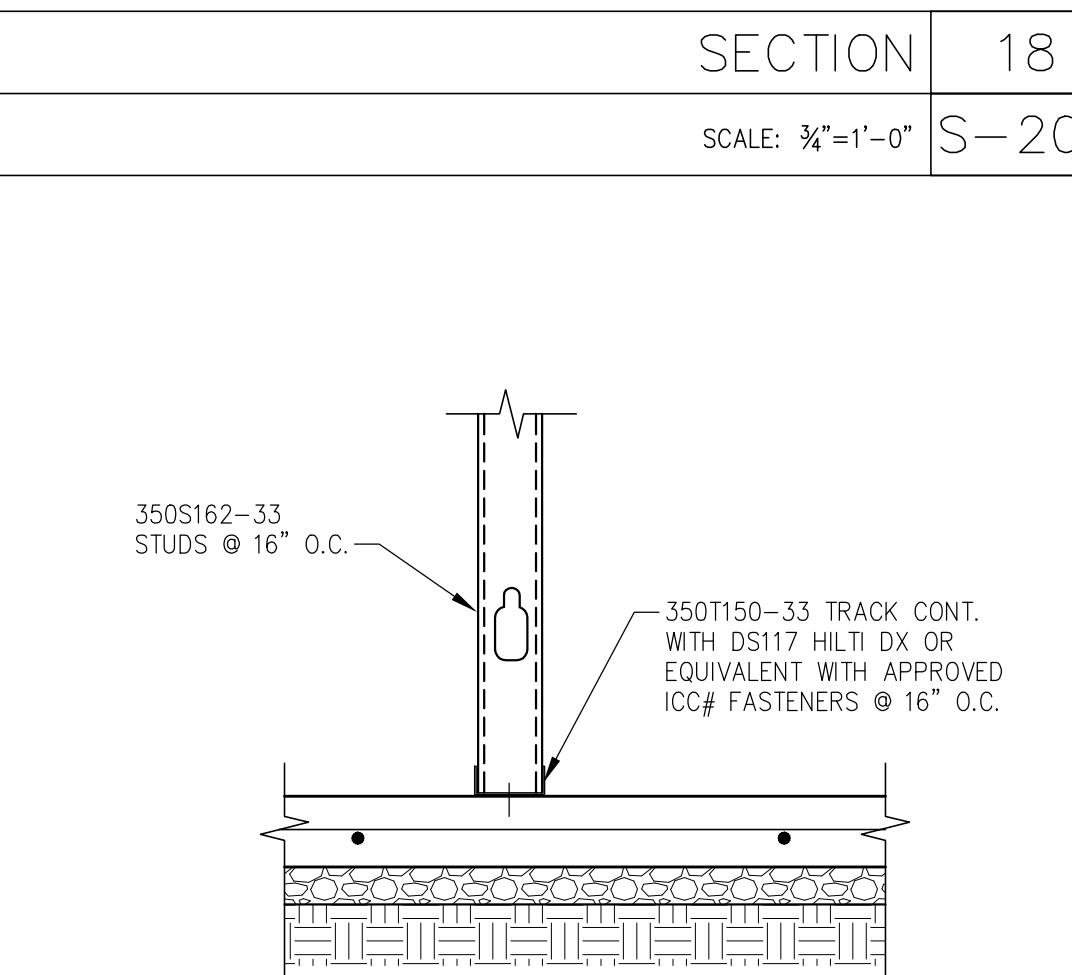
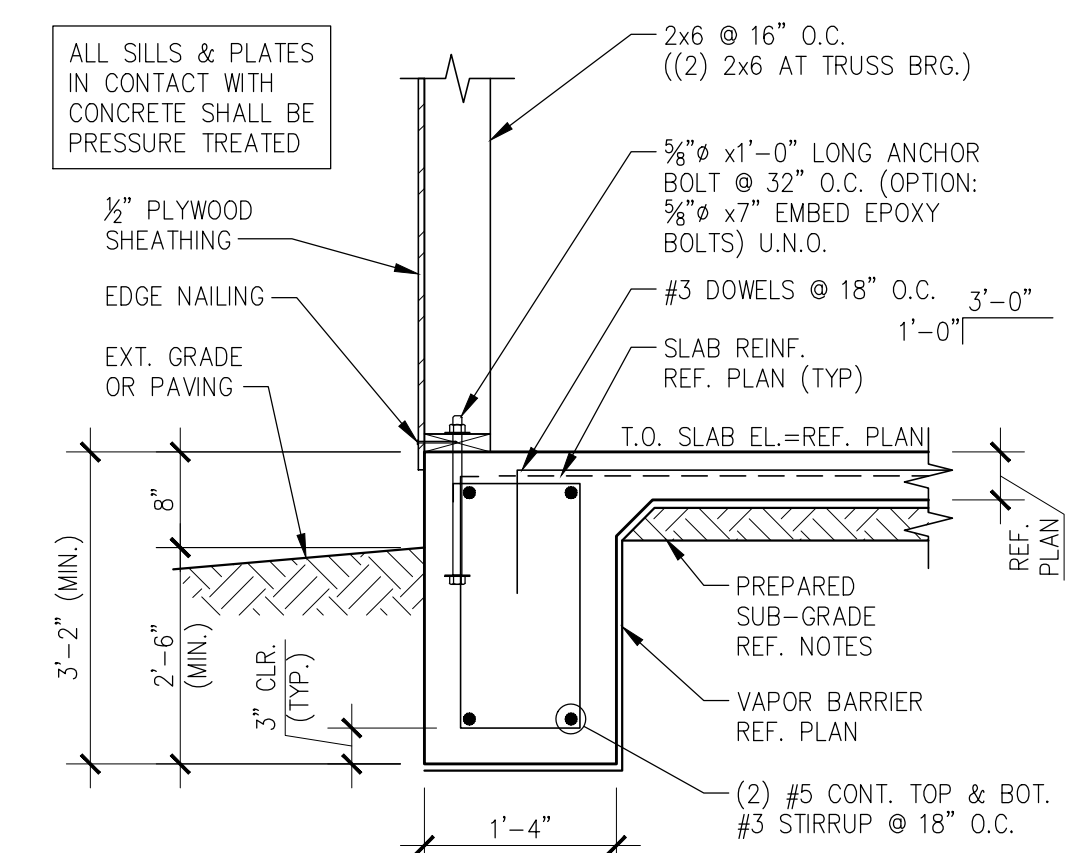
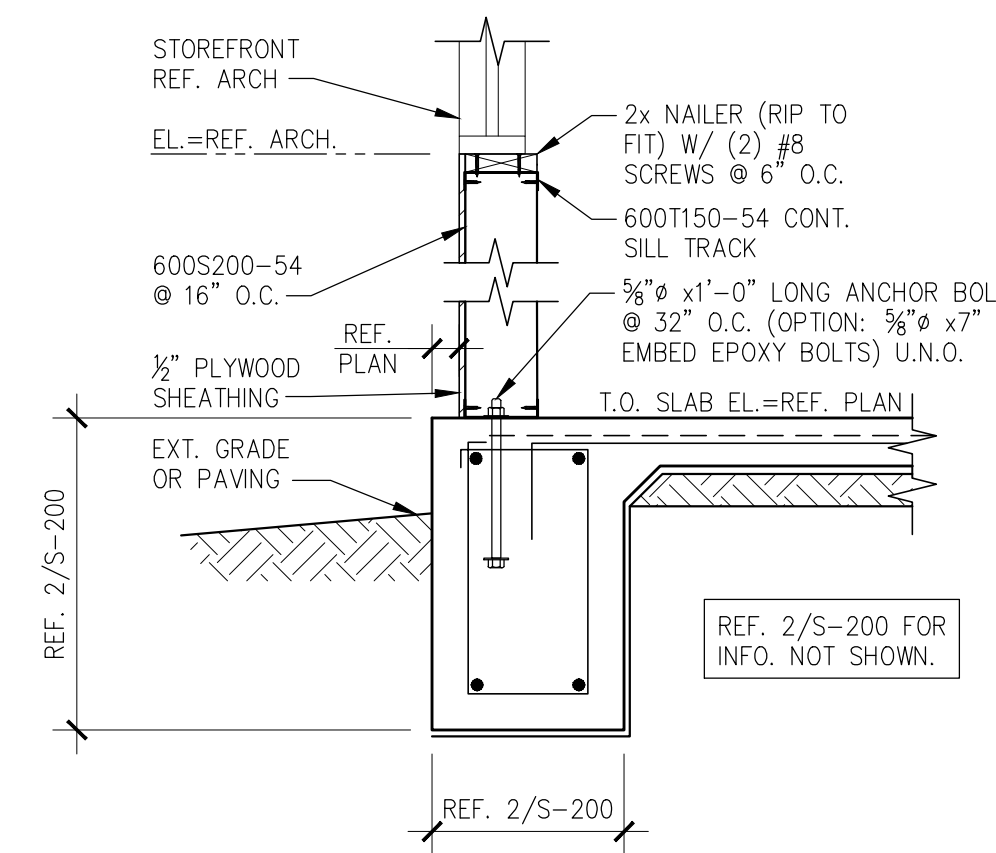
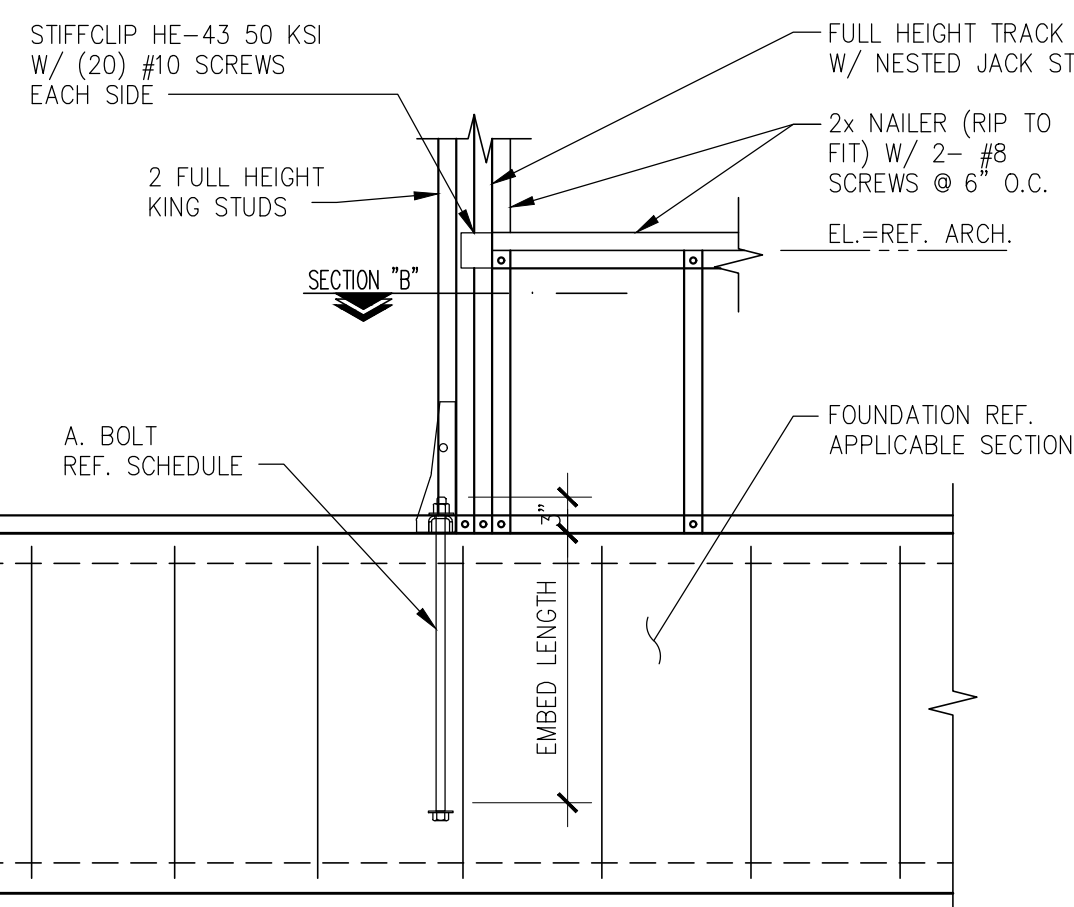


		CAST IN PLACE REQUIREMENTS		EPOXY OPTION REQUIREMENTS
HOLDOWN	SCREW #	ANCH. BOLT	BOLT EMBED	BOLT EMBED
S/HDU4	(6) #14 SCREWS	5/8"Ø	1'-0"	12"

NOTE: ADD LENGTH TO BOLTS EXTENDING THROUGH CURBS



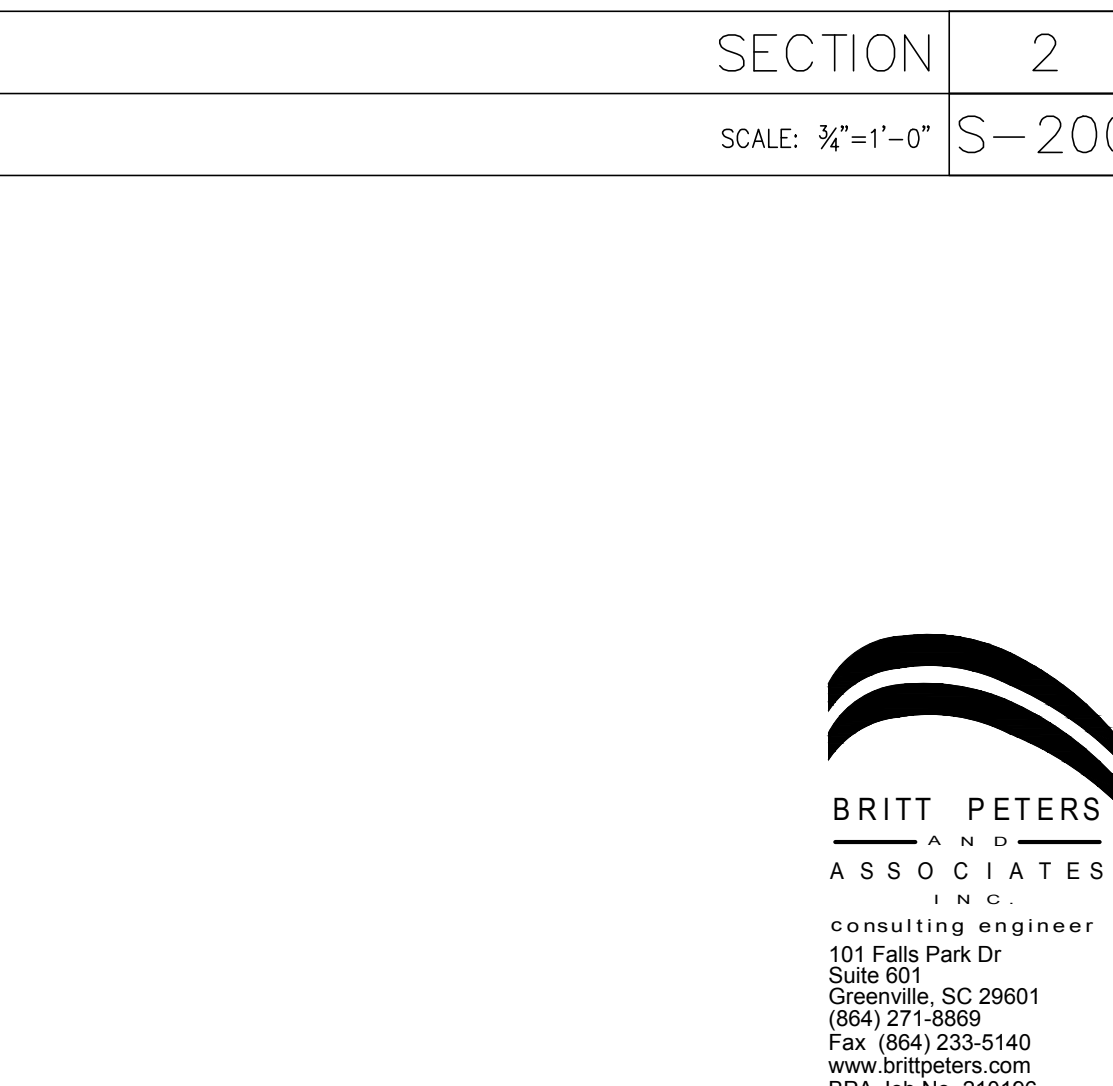
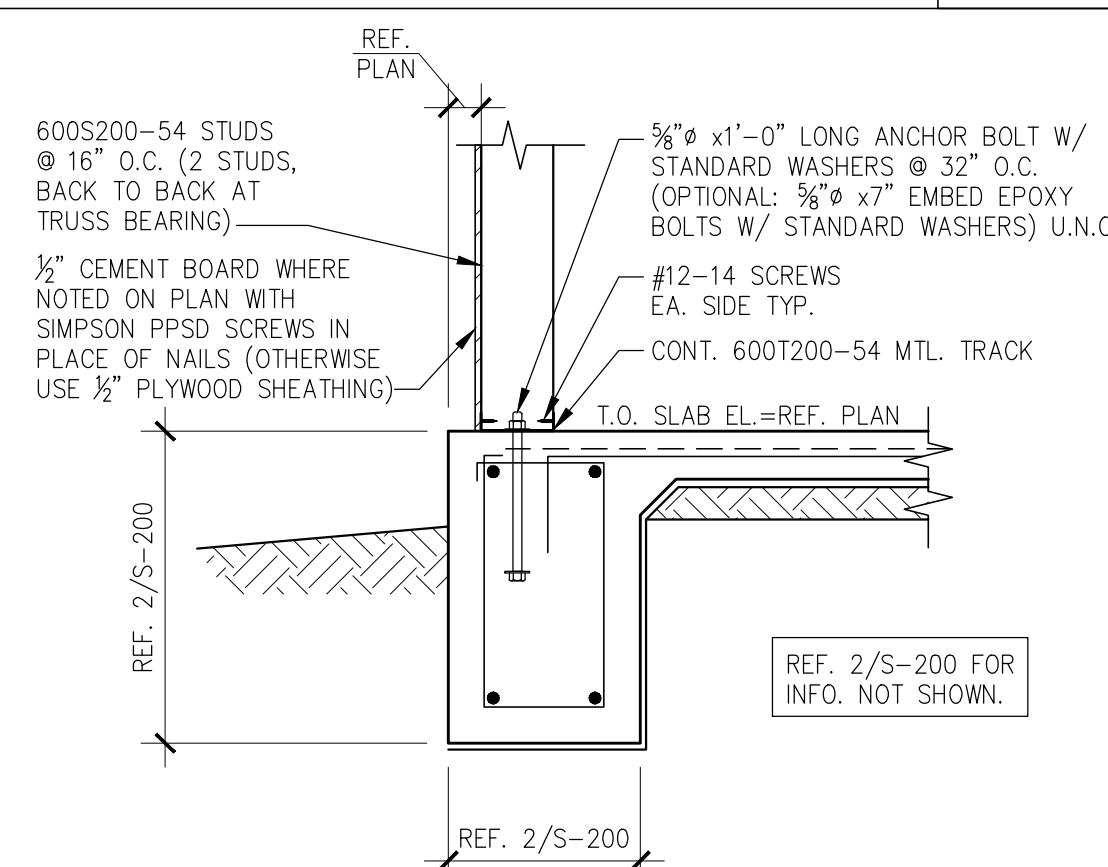
NOTE: EPOXY OPTION IS BASED ON
SIMPSON SET-XP DESIGN VALUES.
EPOXY SUBSTITUTIONS MUST BE
APPROVED BY STRUCTURAL ENGINEER
OF RECORD BEFORE PLACEMENT.



HOLDOWN	STUDS	SCREW #	CAST IN PLACE REQUIREMENTS		POXY OPTION
			ANCH. BOLT	BOLT EMBED	BOLT EMBED
HDU2-SDS2.5	3	(6) SDS $\frac{1}{4}" \times 2\frac{1}{2}"$	$\frac{3}{8}" \phi$	1'-0"	10"
HDU5-SDS2.5	3	(14) SDS $\frac{1}{4}" \times 2\frac{1}{2}"$	$\frac{3}{8}" \phi$	1'-0"	12"
HDU8-SDS2.5	3	(20) SDS $\frac{1}{4}" \times 2\frac{1}{2}"$	$\frac{1}{2}" \phi$	1'-0"	18"

NOTE: ADD LENGTH TO BOLTS EXTENDING THROUGH CURBS

NOTE: EPOXY OPTION IS BASED ON SIMPSON SET-3G DESIGN VALUES. EPOXY SUBSTITUTIONS MUST BE APPROVED BY STRUCTURAL ENGINEER OF RECORD BEFORE PLACEMENT.



PANDA EXPRESS, INC.
1683 Walnut Grove Ave.
Rosemead, California
91770

Telephone: 626.799.9899
Facsimile: 626.372.8288

All ideas, designs, arrangement and plans indicated or represented by this drawing are the property of Panda Express Inc. and were created for use on this specific project. None of these ideas, designs, arrangements or plans may be used by or disclosed to any person, firm, or corporation without the written permission of Panda Express Inc.

REVISIONS:

ISSUE DATE:

1ST	SITE PLAN REVIEW	02-16-21
2ND	PERMIT/BID SET	04-09-21

DRAWN BY: KE

PANDA PROJECT #: S8-22-D8193

PANDA STORE #:

ARCH PROJECT #: 20044.021



4/13/2



8813 PENROSE LANE, SUITE 400
LENEXA, KS 66219
ph: 913.649.8181 • fx: 913.649.1275

PANDA EXPRESS

TRUE WARM & WELCOME
1485 MAIN ST.
HAMILTON, OH 45013

S-200

FOUNDATION DETAILS

TRUE WARM & WELCOME 2300 R5