

RECORD OF SURVEY

PROPERTY OF BERTHA MACE

LOCATED IN

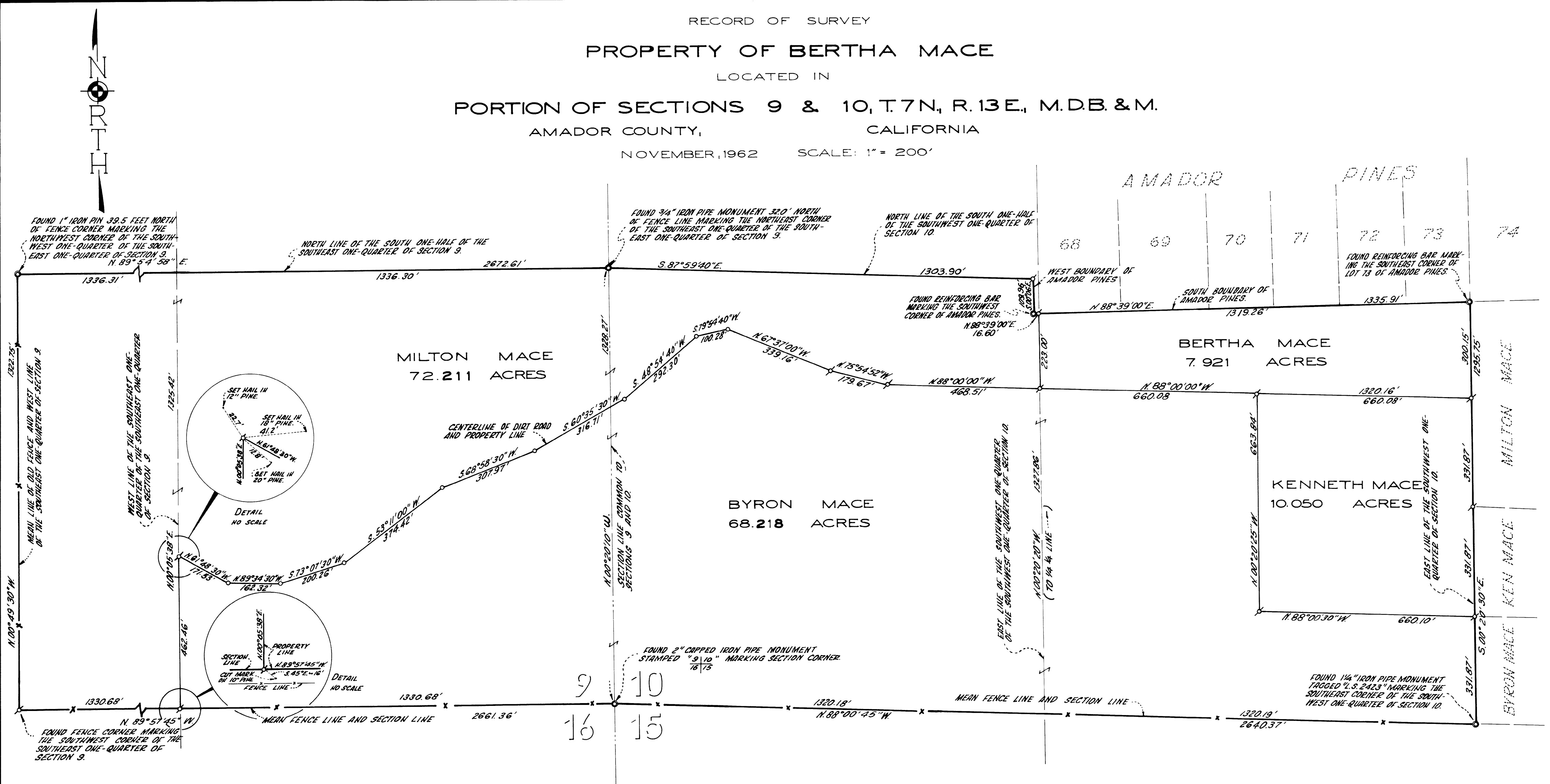
PORTION OF SECTIONS 9 & 10, T.7N, R.13E, M.D.B. & M.

AMADOR COUNTY,

CALIFORNIA

NOVEMBER, 1962

SCALE: 1" = 200'



LEGEND:

- x—x— SET REINFORCING BAR AS MONUMENT
- o—o— FOUND MONUMENT
- x—x— FENCE LINE

MERIDIAN NOTE:

THE MERIDIAN OF THIS SURVEY IS IDENTICAL WITH THAT OF AMADOR PINES THE OFFICIAL PLAT OF WHICH IS RECORDED IN THE OFFICE OF THE RECORDER OF AMADOR COUNTY IN BOOK 5 OF MAPS AT PAGES 92 AND 93.

THIS MAP CORRECTLY REPRESENTS A SURVEY MADE UNDER MY DIRECTION IN CONFORMANCE WITH THE REQUIREMENTS OF CHAPTER 15 OF DIVISION 3 OF THE BUSINESS AND PROFESSIONS CODE OF THE STATE OF CALIFORNIA IN OCTOBER, 1962 AT THE REQUEST OF R. P. MACE.

Harold A. Wecker  
HAROLD A. WECKER, L.S. 3013

THIS MAP HAS BEEN EXAMINED FOR CONFORMANCE WITH THE REQUIREMENTS OF CHAPTER 15 OF DIVISION 3 OF THE BUSINESS AND PROFESSIONS CODE OF THE STATE OF CALIFORNIA THIS 4<sup>th</sup> DAY OF SEPTEMBER, 1963.

Ledger L. McMinns  
COUNTY SURVEYOR OF AMADOR COUNTY

FILED FOR RECORD THIS 11<sup>th</sup> DAY OF Sept., 1963, AT 10 HOURS, 30 MINUTES, P. M., IN BOOK 10 OF MAPS AND PLATS AT PAGE 22, AT THE REQUEST OF HAROLD A. WECKER.

Filed 8:50 P.M.  
County Recorder of Amador County