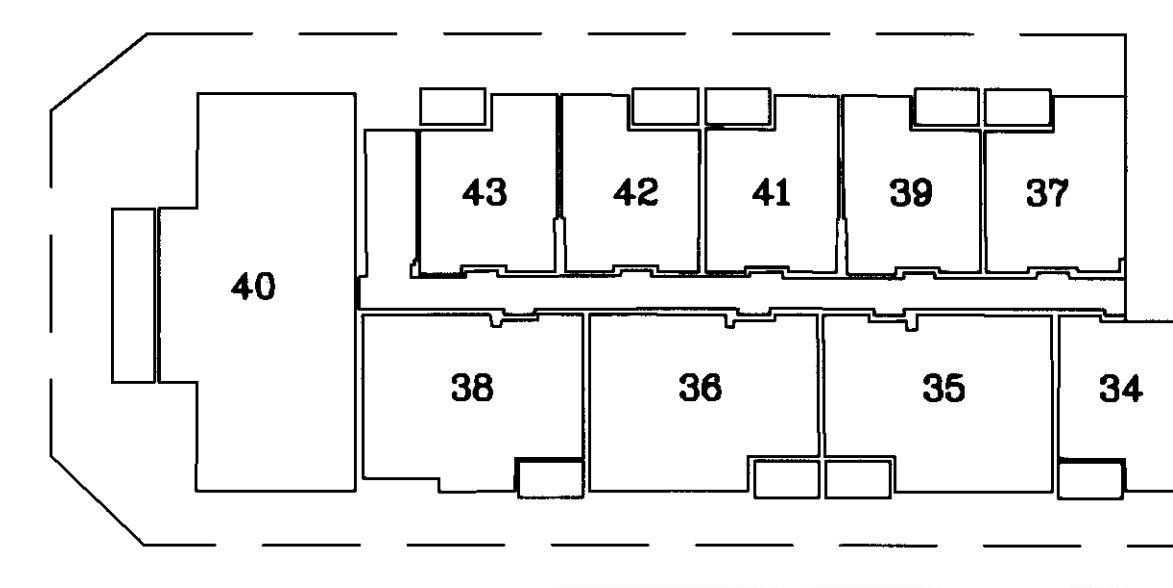
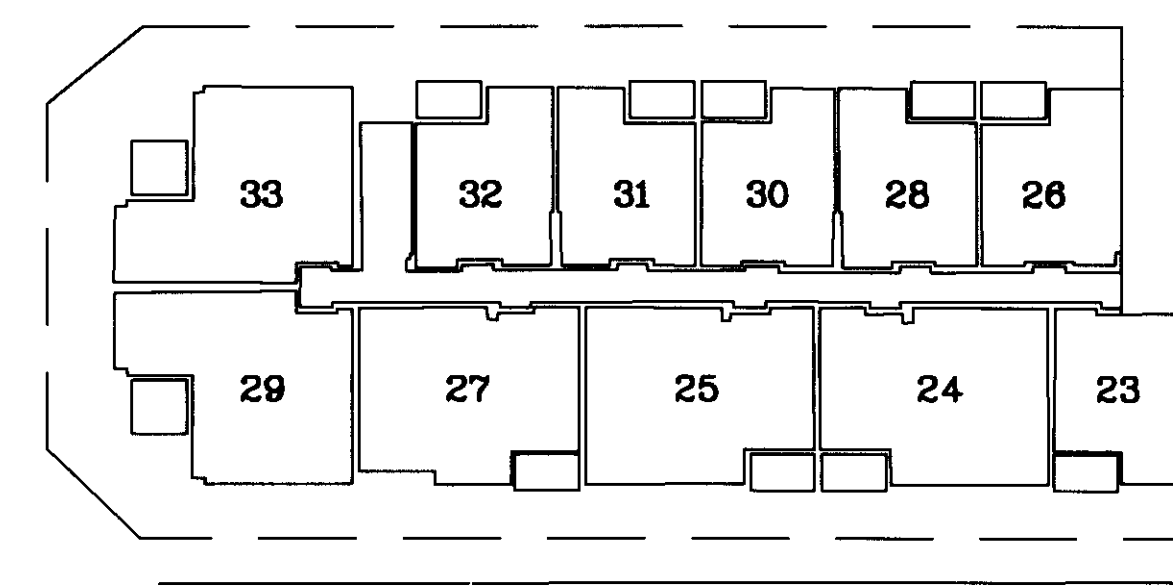


LEVEL 63.00

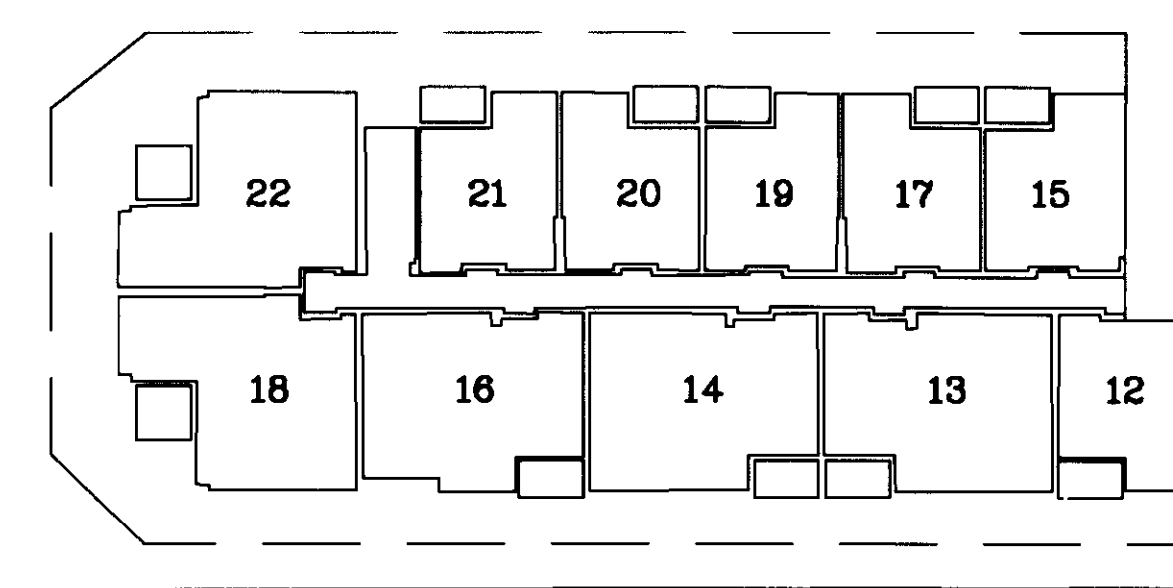
TRACT NO. 36-193C



LEVEL 93.00



LEVEL 83.00



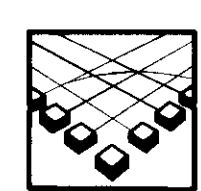
LEVEL 73.00

AMENDED REASSESSMENTS

MAP REF. NO.	REASMT. NO.	ASSESSOR'S PARCEL NO.	PARCEL DESCRIPTION
1	6225-1	33-020-30-1117	Tract 36-193C, Unit No. 1117
2	6225-2	33-020-30-1119	Tract 36-193C, Unit No. 1119
3	6225-3	33-020-30-1121	Tract 36-193C, Unit No. 1121
4	6225-4	33-020-30-1122	Tract 36-193C, Unit No. 1122
5	6225-5	33-020-30-1123	Tract 36-193C, Unit No. 1123
6	6225-6	33-020-30-1124	Tract 36-193C, Unit No. 1124
7	6225-7	33-020-30-1125	Tract 36-193C, Unit No. 1125
8	6225-8	33-020-30-1126	Tract 36-193C, Unit No. 1126
9	6225-9	33-020-30-1128	Tract 36-193C, Unit No. 1128
10	6225-10	33-020-30-1130	Tract 36-193C, Unit No. 1130
11	6225-11	33-020-30-1132	Tract 36-193C, Unit No. 1132
12	6225-12	33-020-30-1217	Tract 36-193C, Unit No. 1217
13	6225-13	33-020-30-1219	Tract 36-193C, Unit No. 1219
14	6225-14	33-020-30-1221	Tract 36-193C, Unit No. 1221
15	6225-15	33-020-30-1222	Tract 36-193C, Unit No. 1222
16	6225-16	33-020-30-1223	Tract 36-193C, Unit No. 1223
17	6225-17	33-020-30-1224	Tract 36-193C, Unit No. 1224
18	6225-18	33-020-30-1225	Tract 36-193C, Unit No. 1225
19	6225-19	33-020-30-1226	Tract 36-193C, Unit No. 1226
20	6225-20	33-020-30-1228	Tract 36-193C, Unit No. 1228
21	6225-21	33-020-30-1230	Tract 36-193C, Unit No. 1230
22	6225-22	33-020-30-1232	Tract 36-193C, Unit No. 1232

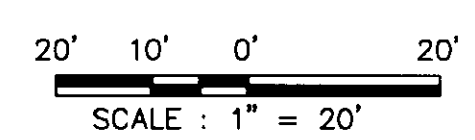
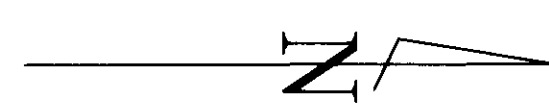
AMENDED REASSESSMENTS

MAP REF. NO.	REASMT. NO.	ASSESSOR'S PARCEL NO.	PARCEL DESCRIPTION
23	6225-23	33-020-30-1317	Tract 36-193C, Unit No. 1317
24	6225-24	33-020-30-1319	Tract 36-193C, Unit No. 1319
25	6225-25	33-020-30-1321	Tract 36-193C, Unit No. 1321
26	6225-26	33-020-30-1322	Tract 36-193C, Unit No. 1322
27	6225-27	33-020-30-1323	Tract 36-193C, Unit No. 1323
28	6225-28	33-020-30-1324	Tract 36-193C, Unit No. 1324
29	6225-29	33-020-30-1325	Tract 36-193C, Unit No. 1325
30	6225-30	33-020-30-1326	Tract 36-193C, Unit No. 1326
31	6225-31	33-020-30-1328	Tract 36-193C, Unit No. 1328
32	6225-32	33-020-30-1330	Tract 36-193C, Unit No. 1330
33	6225-33	33-020-30-1332	Tract 36-193C, Unit No. 1332
34	6225-34	33-020-30-1417	Tract 36-193C, Unit No. 1417
35	6225-35	33-020-30-1419	Tract 36-193C, Unit No. 1419
36	6225-36	33-020-30-1421	Tract 36-193C, Unit No. 1421
37	6225-37	33-020-30-1422	Tract 36-193C, Unit No. 1422
38	6225-38	33-020-30-1423	Tract 36-193C, Unit No. 1423
39	6225-39	33-020-30-1424	Tract 36-193C, Unit No. 1424
40	6225-40	33-020-30-1425	Tract 36-193C, Unit No. 1425
41	6225-41	33-020-30-1426	Tract 36-193C, Unit No. 1426
42	6225-42	33-020-30-1428	Tract 36-193C, Unit No. 1428
43	6225-43	33-020-30-1430	Tract 36-193C, Unit No. 1430
44	6225-44	33-020-31	REMAINDER



**MuniFinancial**

27368 Via Industria  
Suite 110  
Temecula, California 92590-3661  
Phone (951) 587-3500 Fax (951) 587-3510



LEGEND

- APPORTIONMENT BOUNDARY
- 1 MAP REFERENCE NUMBER

## AMENDED REASSESSMENT DIAGRAM OF REASSESSMENT DISTRICT NO. 2004-1

MAMMOTH COMMUNITY WATER DISTRICT  
COUNTY OF MONO  
STATE OF CALIFORNIA

AMENDING REASSESSMENT NUMBERS 2463, 2655, 2656, 6225, 6225-44, 6316, 6320, 6396 AND 6396-31