



Chick-fil-A

Chick-fil-A
5200 Buffington Road
Atlanta, Georgia 30349-2998

INTERPLAN
ARCHITECTURE
ENGINEERING
INTERIOR DESIGN
PROJECT MANAGEMENT

604 COURTLAND STREET
SUITE 100
ORLANDO, FLORIDA 32804
PH 407.645.5038
FX 407.629.9124

SEAL:
THIS DOCUMENT IS NOT FOR CONSTRUCTION
UNLESS THE ARCHITECT OR ENGINEER'S
SIGNATURE AND SEAL APPEAR BELOW

CHICK-FIL-A
Woodlawn Square FSR
1201 Johnson Ferry Road, Marietta, GA 30068

FSR# 00802

REVISION SCHEDULE			DESCRIPTION	
NO.	DATE			
2	10/18/17	OWNER REVISIONS - OMD		
5	03/29/18	OPERATOR REVISIONS		

CONSULTANT PROJECT # 2016.0430
PRINTED FOR BID
DATE 2017/06/26
DRAWN BY AD

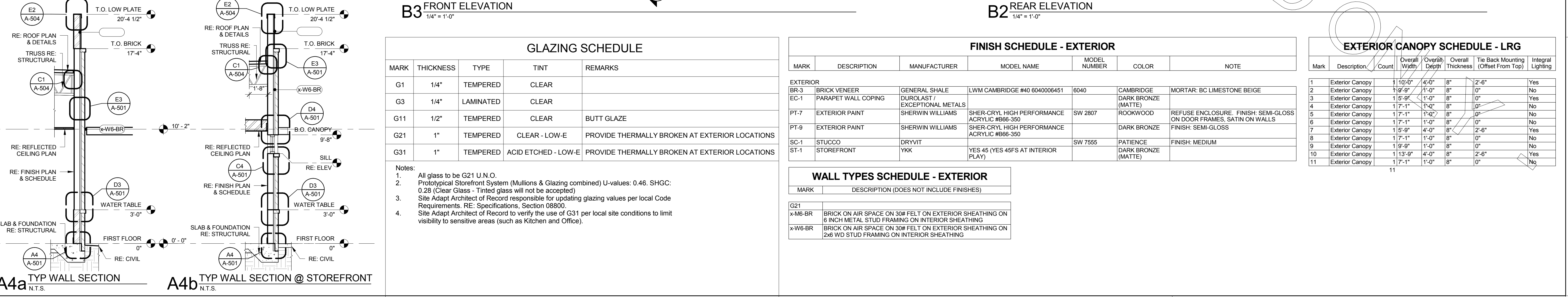
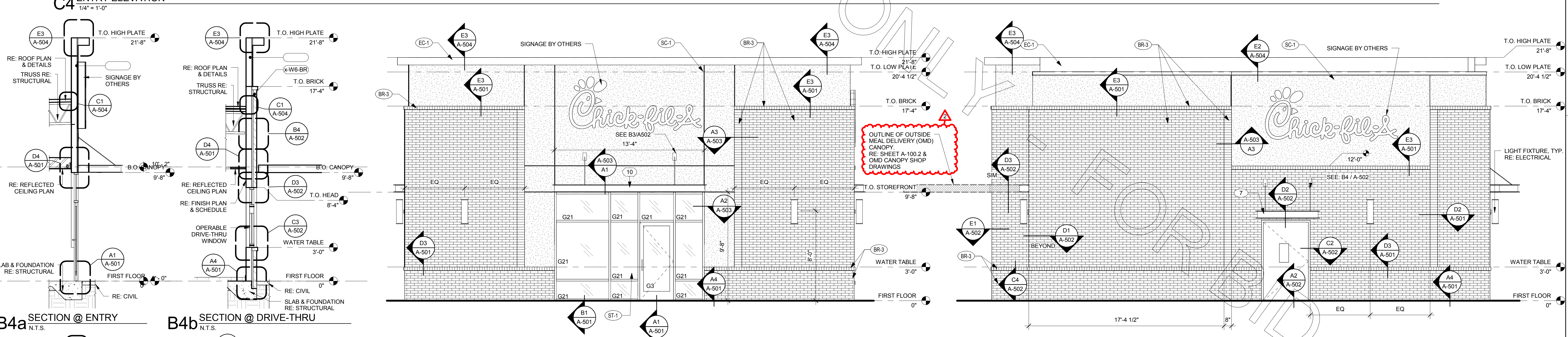
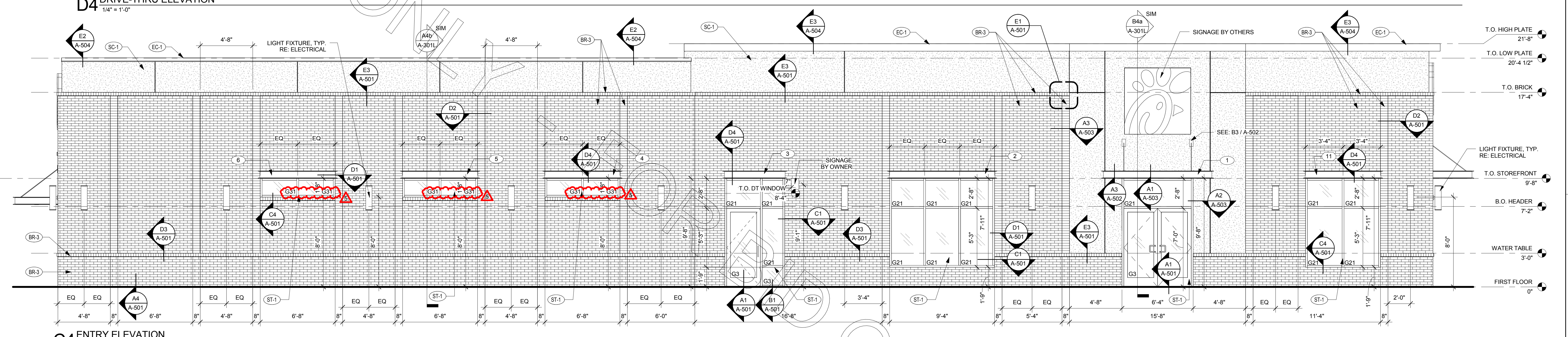
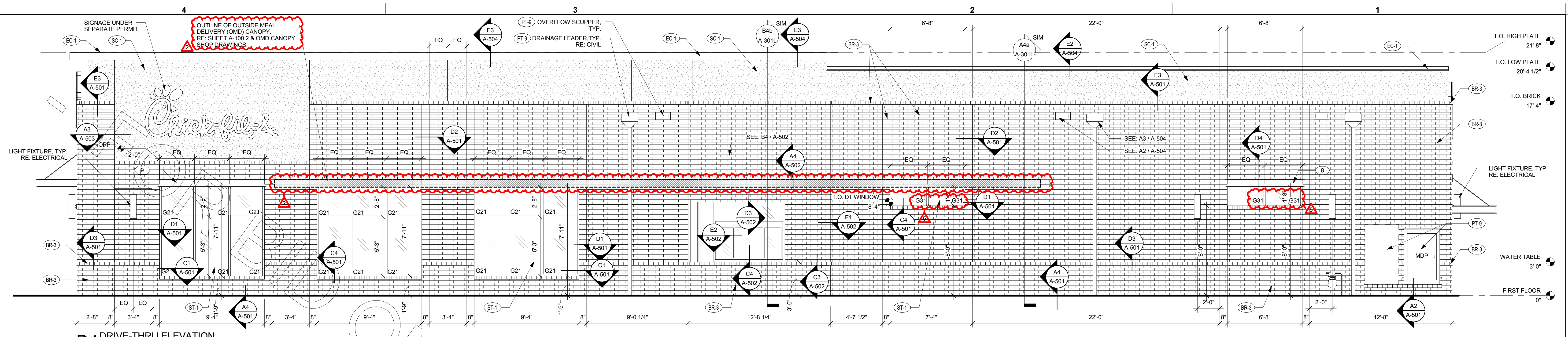
Information contained on this drawing and in all digital files produced for above named project may not be reproduced in any manner without express written or verbal consent from Interplan LLC. Reproduction of these documents for any purpose other than that for which they were prepared, reproductions or assignments are prohibited.

EXTERIOR ELEVATIONS AND SECTIONS

SHEET

SHEET NUMBER

A-301L



GLAZING SCHEDULE				
MARK	THICKNESS	TYPE	TINT	REMARKS
G1	1/4"	TEMPERED	CLEAR	
G3	1/4"	LAMINATED	CLEAR	
G11	1/2"	TEMPERED	CLEAR	BUTT GLAZE
G21	1"	TEMPERED	CLEAR - LOW-E	PROVIDE THERMALLY BROKEN AT EXTERIOR LOCATIONS
G31	1"	TEMPERED	ACID ETCHED - LOW-E	PROVIDE THERMALLY BROKEN AT EXTERIOR LOCATIONS

Notes:

- All glass to be G21 U.N.O.
- Prototypical Storefront System (Mullions & Glazing combined) U-values: 0.46. SHGC: 0.28 (Clear Glass - Tinted glass will not be accepted)
- Site Adapt Architect of Record responsible for updating glazing values per local Code Requirements. RE: Specifications, Section 08800.
- Site Adapt Architect of Record to verify the use of G31 per local site conditions to limit visibility to sensitive areas (such as Kitchen and Office).

FINISH SCHEDULE - EXTERIOR						
MARK	DESCRIPTION	MANUFACTURER	MODEL NAME	MODEL NUMBER	COLOR	NOTE
BR-3	BRICK VENEER	GENERAL SHALE	LWM CAMBRIDGE #40 6040006451	6040	CAMBRIDGE	MORTAR: BC Limestone BEIGE
EC-1	PARAPET WALL COPING	DUROLAST / EXCEPTIONAL METALS			DARK BRONZE (MATTE)	
PT-7	EXTERIOR PAINT	SHERWIN WILLIAMS	SHER-CRYL HIGH PERFORMANCE ACRYLIC #666-350	SW 2807	ROOKWOOD	REFUSE ENCLOSURE: FINISH: SEMI-GLOSS ON DOOR FRAMES, SATIN ON WALLS
PT-8	EXTERIOR PAINT	SHERWIN WILLIAMS	SHER-CRYL HIGH PERFORMANCE ACRYLIC #666-350		DARK BRONZE	FINISH: SEMI-GLOSS
SC-1	STUCCO	DRYVIT		SW 7555	PATIENCE	FINISH: MEDIUM
ST-1	STOREFRONT	YKK	YES 45 (YES 45FS AT INTERIOR PLAY)		DARK BRONZE (MATTE)	

WALL TYPES SCHEDULE - EXTERIOR	
MARK	DESCRIPTION (DOES NOT INCLUDE FINISHES)
G21	BRICK ON AIR SPACE ON 30# FELT ON EXTERIOR SHEATHING ON 6" INCH METAL STUD FRAMING ON INTERIOR SHEATHING
x-W6-BR	BRICK ON AIR SPACE ON 30# FELT ON EXTERIOR SHEATHING ON 2x6 WD STUD FRAMING ON INTERIOR SHEATHING

EXTERIOR CANOPY SCHEDULE - LRG									
Mark	Description	Count	Overall Width	Overall Depth	Overall Thickness	Tie Back Mounting (Offset From Top)	Integral Lighting		
1	Exterior Canopy	1	10'-0"	4'-0"	8"	2'-6"	Yes		
2	Exterior Canopy	1	10'-0"	1'-0"	8"	0"	No		
3	Exterior Canopy	1	10'-0"	1'-0"	8"	0"	Yes		
4	Exterior Canopy	1	17'-1"	1'-0"	8"	0"	No		
5	Exterior Canopy	1	17'-1"	1'-0"	8"	0"	No		
6	Exterior Canopy	1	17'-1"	1'-0"	8"	0"	No		
7	Exterior Canopy	1	17'-1"	1'-0"	8"	0"	No		
8	Exterior Canopy	1	17'-1"	1'-0"	8"	0"	No		
9	Exterior Canopy	1	17'-1"	1'-0"	8"	0"	No		
10	Exterior Canopy	1	17'-1"	1'-0"	8"	0"	Yes		
11	Exterior Canopy	1	17'-1"	1'-0"	8"	0"	No		

5/10/2018 9:31:44 AM