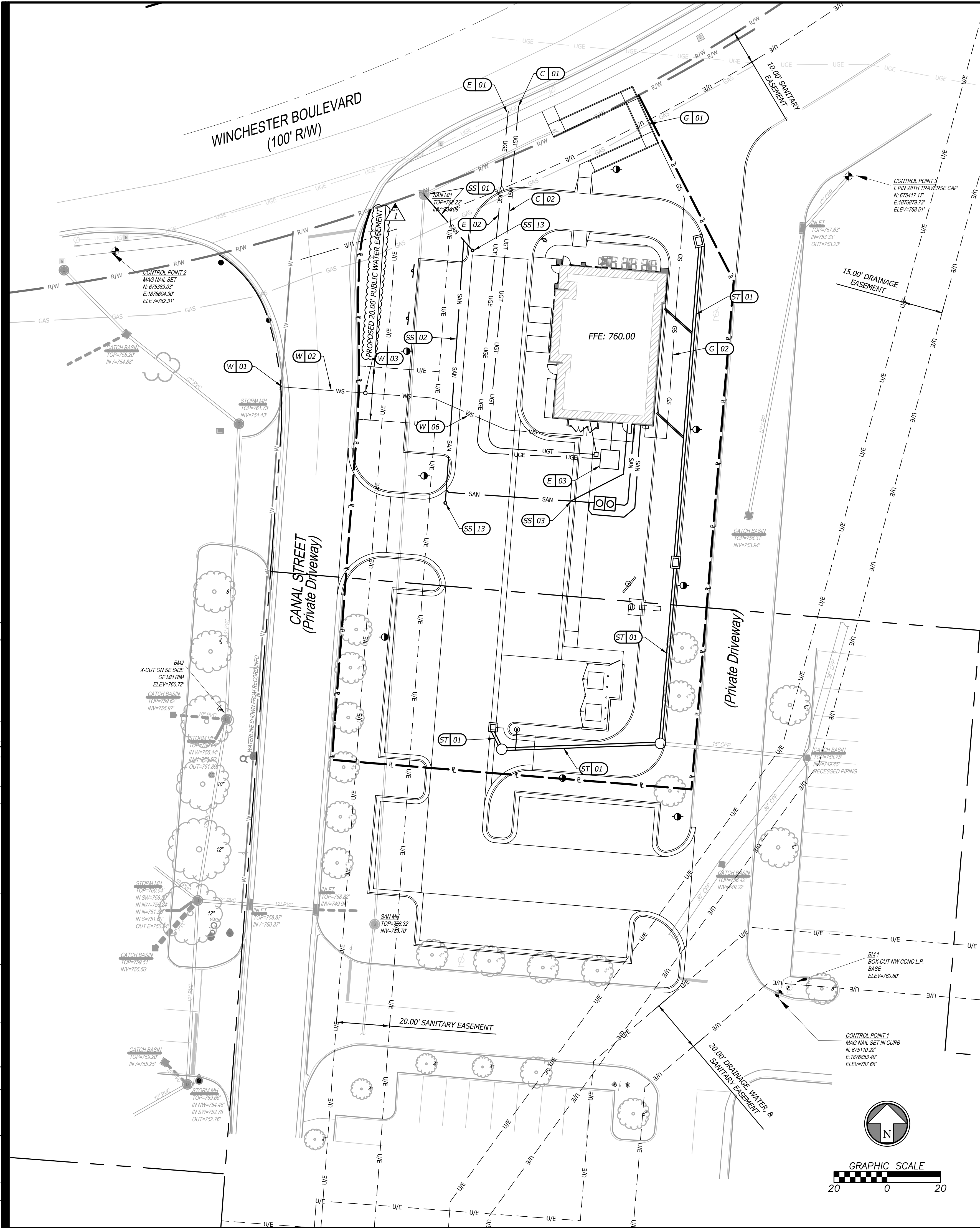


Apr. 07, 2020 - 5:19pm. Plotted By: kurt.veder V:\026800-Panda Express - Master 2018\026800.05-Canal Winchester, OH\04-DWG\Enr\Sheet\026800.05-SUTS-UTIL.dwg Layout: UTIL Plan



CONSTRUCTION NOTES

W - WATER SERVICE INFORMATION - CITY OF CANAL WINCHESTER WATER DEPARTMENT

- 01 EXISTING WATER MAIN LINE. COORDINATE WITH CITY OF CANAL WINCHESTER WATER DEPARTMENT FOR EXACT LOCATION. INSTALL TAPPING SLEEVE AND VALVE FOR MAIN CONNECTION.
- 02 BORE 35 L.F. OF 1 1/2" POLYETHYLENE (HDPE 4710 ASTM-D3350) DOMESTIC WATER SERVICE UNDER EXISTING ROAD.
- 03 INSTALL CURB STOP PER CITY OF CANAL WINCHESTER WATER DEPARTMENT STANDARD DRAWING W-06A-01.
- 04 NOT USED
- 05 NOT USED
- 06 INSTALL 88 L.F. OF 1 1/2" POLYETHYLENE (HDPE 4710 ASTM-D3350) DOMESTIC WATER SERVICE.
- 07 CONNECT TO BUILDING DOMESTIC SERVICE LINE. SEE PLUMBING PLANS FOR CONTINUATION INTO BUILDING. METER AND BACKFLOW PREVENTER TO BE INSIDE BUILDING.
- 08 INSTALL 3/4" POLYETHYLENE IRRIGATION STUB. IRRIGATION TO BE DESIGN/BUILD BY CONTRACTOR. SEE IRRIGATION SPECS ON L3.1 & L3.2. IRRIGATION METER AND BACKFLOW PREVENTER TO BE INSIDE BUILDING.

E - ELECTRIC SERVICE INFORMATION - SOUTH CENTRAL POWER

- 01 CONNECT TO EXISTING ELECTRIC SERVICE. COORDINATE WITH SOUTH CENTRAL POWER FOR EXACT LOCATION.
- 02 INSTALL 174 L.F. OF 4" CONDUIT FOR PRIMARY ELECTRIC SERVICE. COORDINATE WITH SOUTH CENTRAL POWER FOR EXACT ROUTE.
- 03 INSTALL TRANSFORMER AND PAD PER SOUTH CENTRAL POWER STANDARDS.
- 04 INSTALL 11 L.F. OF 4" CONDUIT FOR SECONDARY ELECTRIC SERVICE LINE
- 05 CONNECT TO BUILDING SERVICE LINE. SEE ELECTRICAL PLANS FOR CONTINUATION INTO BUILDING.

C - COMMUNICATION SERVICE INFORMATION - AT&T

- 01 CONNECT TO EXISTING COMMUNICATIONS SERVICE. COORDINATE WITH AT&T FOR EXACT LOCATION.
- 02 INSTALL 167 L.F. OF 4" CONDUIT FOR TELECOM AND DATA SERVICES.
- 03 INSTALL PULL BOX PER AT&T/OWNER STANDARDS. SEE ELECTRICAL PLANS FOR SPECIFICATIONS.
- 04 INSTALL 12 L.F. OF 4" CONDUIT FOR TELECOM AND DATA SERVICES.
- 05 CONNECT TO BUILDING SERVICE LINES. SEE ELECTRICAL PLANS FOR CONTINUATION.

G - GAS SERVICE INFORMATION - COLUMBIA GAS

- 01 CONNECT TO EXISTING GAS MAIN PER COLUMBIA GAS STANDARDS.
- 02 INSTALL 134 L.F. OF 3" GAS SERVICE LINE.
- 03 CONNECT GAS SERVICE TO BUILDING. SEE PLUMBING PLANS FOR CONTINUATION INTO BUILDING.

ST - STORM SEWER INFORMATION - CITY OF CANAL WINCHESTER STORM WATER DEPARTMENT

- 01 PROPOSED PRIVATE 12" STORM SEWER LINE. SEE SHEETS C6.1-C6.2

SS - SANITARY SEWER INFORMATION - CITY OF CANAL WINCHESTER WATER DEPARTMENT

- 01 CONNECT TO EXISTING SANITARY SEWER USING INSIDE DROP. SEE DETAIL ON SHEET C8.4. COORDINATE WITH CITY OF CANAL WINCHESTER CONSTRUCTION SERVICES DEPARTMENT PRIOR TO CONSTRUCTION.
PROPOSED SANITARY SERVICE FL AT MANHOLE: 752.34
EXISTING SANITARY MAIN FL: 734.60.
INSTALL 20.9 L.F. OF 6" SDR-35 PVC @ 1.00% SLOPE FROM MANHOLE TO BEND. UPSTREAM FL ELEV: 752.55.
INSTALL 94.8 L.F. OF 6" SDR-35 PVC @ 1.00% SLOPE FROM BEND TO BEND. UPSTREAM FL ELEV: 753.50
INSTALL 47.0 L.F. OF 6" SDR-35 PVC @ 1.00% SLOPE FROM RISER TO WYE. FL ELEV: 753.97
INSTALL 6" WYE AND 6.9 L.F. OF 6" SDR-35 PVC @ 2.00% SLOPE FROM WYE TO VENT CONNECTION. FL ELEV: 754.11
INSTALL 2 L.F. OF 6" SDR-35 PVC @ 2.00% SLOPE FROM VENT CONNECTION TO GREASE INTERCEPTOR CONNECTION. FL ELEV: 754.15
INSTALL 1000 GALLON GREASE INTERCEPTOR. SEE PLUMBING PLAN P-101 FOR SPECIFICATIONS.
FL (DS) ELEV: 754.15, FL (US) ELEV: 754.31
INSTALL 5 L.F. OF 6" SDR-35 PVC @ 2.00% SLOPE FOR GREASE SERVICE, FROM GREASE INTERCEPTOR CONNECTION TO 2 - 6" 45° BENDS. FL ELEV: 754.41
INSTALL 29.5 L.F. OF 6" SDR-35 PVC @ 2.00% SLOPE FOR GREASE SERVICE, FROM BENDS TO BUILDING CONNECTION. FL ELEV: 755.00
INSTALL 22.2 L.F. OF 6" SDR-35 PVC @ 2.51% SLOPE FROM WYE TO 45° BEND. FL ELEV: 754.53
INSTALL 18.7 L.F. OF 6" SDR-35 PVC @ 2.51% SLOPE FROM BEND TO BUILDING CONNECTION. FL ELEV: 755.00
INSTALL 53.6 L.F. OF 2" VENT LINE.
CONNECT TO BUILDING SERVICE LINES. SEE PLUMBING PLANS FOR CONTINUATION. FL ELEV: 755.00
INSTALL CLEANOUT. SEE DETAIL ON SHEET C8.4.

UTILITY NOTES

- 1. CONTRACTOR SHALL REFER TO ALL SPECIFICATIONS, GUIDELINES, AND INSTALLATION DRAWINGS FROM UTILITY SERVICE PROVIDER FOR THE INSTALLATION OF ALL SERVICE LINES.
- 2. CONTRACTOR TO ENSURE 6" MINIMUM SEPARATION BETWEEN UTILITIES AT CROSSINGS, EXCEPT FOR 18" VERTICAL SEPARATION BETWEEN WATER SERVICE AND SEWER SERVICES. CONTRACTOR TO CALL CIVIL IF ANY CONFLICTS BETWEEN UTILITIES ARE FOUND.
- 3. A COPPER CLAD STEEL TRACE WIRE SHALL BE INSTALLED WITH ALL WATER SERVICES. TRACER WIRE FOR OPEN CUT INSTALLATIONS SHALL BE #14 AWG WITH 30 MIL COATING BY COPPERHEAD INDUSTRIES OR EQUAL. TRACER WIRE SHALL BE #8 AWG WITH 45 MIL COATING BY COPPERHEAD INDUSTRIES OR EQUAL FOR DIRECTIONAL BORE INSTALLATIONS. TRACER WIRE MATERIALS AND INSTALLATION SHALL BE PER CW SS-W1 SUPPLEMENTAL SPECIFICATION FOR WATERLINE TRACE WIRE.

GRAPHIC SCALE

20 0 20

GRAPHIC SCALE

5 0 5

BHC RHODES
Civil Engineering • Surveying • Utilities
7101 College Blvd., Suite 400
Overland Park, Kansas 66210
p. (913) 663-1900 f. (913) 663-1633
BHC RHODES is a trademark of Brungardt Honanicki & Company, P.A.



PANDA EXPRESS, INC.
1683 Walnut Grove Ave.
Rosemead, California
91770
Telephone: 626.799.9898
Facsimile: 626.372.8288

All ideas, designs, arrangement and plans indicated or represented by this drawing are the property of Panda Express Inc. and were created for use on this specific project. None of these ideas, designs, arrangements or plans may be used by or disclosed to any person, firm, or corporation without the written permission of Panda Express Inc.

REVISIONS:	
▲ TECHNICAL REVIEW GROUP	03.17.20
▲ TECHNICAL REVIEW GROUP	04.07.20

ISSUE DATE:	
1st PERMIT/BID SET	01-13-20

DRAWN BY:

PANDA PROJECT #: S8-20-D6790
ARCH PROJECT #: 18044.035



hckloverarchitect
8813 Penrose Lane, Suite 400,
Lenexa, KS 66219
ph: 913.649.8181 • fx: 913.649.1275

PANDA EXPRESS
TRUE WARM & WELCOME 2300 R1
CANAL ST. & WINCHESTER BLVD
CANAL-WINCHESTER, OH 43110

UTILITY PLAN

C4.0

TRUE WARM & WELCOME 2300 R1

01-13-20
PERMIT/BID SET