

ROOFTOP EQUIPMENT SCHEDULE									
TAG	DESCRIPTION	KW	H.P.	FLA	VOLT/Ø	WIRE, CONDUIT	CONN.	MOUNT HEIGHT	DISC. SW. WITH RK1 FUSES PER MFR'S REQ'S. AND/OR REMARKS
AC-1	AC UNIT			16.4	460V.3Ø	3 #12, #12GND., 3/4" C.	<input type="checkbox"/>	AT UNIT	30AS/15AF
MA-1	MAKE-UP AIR UNIT	5.0	7.6	460V.3Ø	3 #12, #12GND., 3/4" C.	<input type="checkbox"/>	AT UNIT	①	
CD-1	MAKE-UP AIR COND. UNIT		8.5	460V.3Ø	3 #12, #12GND., 3/4" C.	<input type="checkbox"/>	AT UNIT	30AS/15AF	
CD-2	MAKE-UP AIR COND. UNIT		8.5	460V.3Ø	3 #12, #12GND., 3/4" C.	<input type="checkbox"/>	AT UNIT	30AS/15AF	
EF-1	EXHAUST FAN	2.0	3.4	460V.3Ø	3 #12, #12GND., 3/4" C.	<input type="checkbox"/>	AT UNIT	①	
EF-2	EXHAUST FAN	2.0	3.4	460V.3Ø	3 #12, #12GND., 3/4" C.	<input type="checkbox"/>	AT UNIT	①	
31-S	W/I COOLER COND.	1.5	10.0	208V.1Ø	2 #12, #12 GND., 3/4" C.	<input checked="" type="checkbox"/>	AT UNIT	② ③	
32-S1	W/I FREEZER COND.	1.5	10.0	208V.1Ø	2 #12, #12 GND., 3/4" C.	<input checked="" type="checkbox"/>	AT UNIT	② ③	
10J-S1	ICE MAKER COND.	1.5	11.8	208V.1Ø	2 #12, #12 GND., 3/4" C.	<input checked="" type="checkbox"/>	AT UNIT	② ③	

- ① DISCONNECT SWITCH PROVIDED WITH UNIT.  
② COMBINATION 30A, 2P, 2F, WP DISCONNECT SWITCH WITH RK5 FUSES PER MANUFACTURER RECOMMENDATION.  
③ COMBINE CIRCUITRY IN 1" CONDUIT FROM J-BOX ON EQUIPMENT DISCONNECT SWITCH SUPPORT. REFER TO DETAIL THIS SHEET, 1 / E-104.

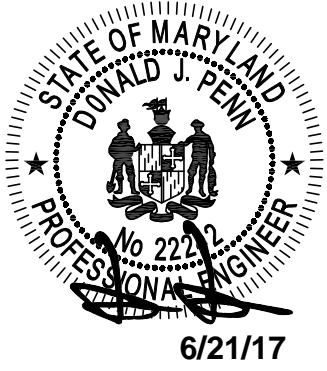
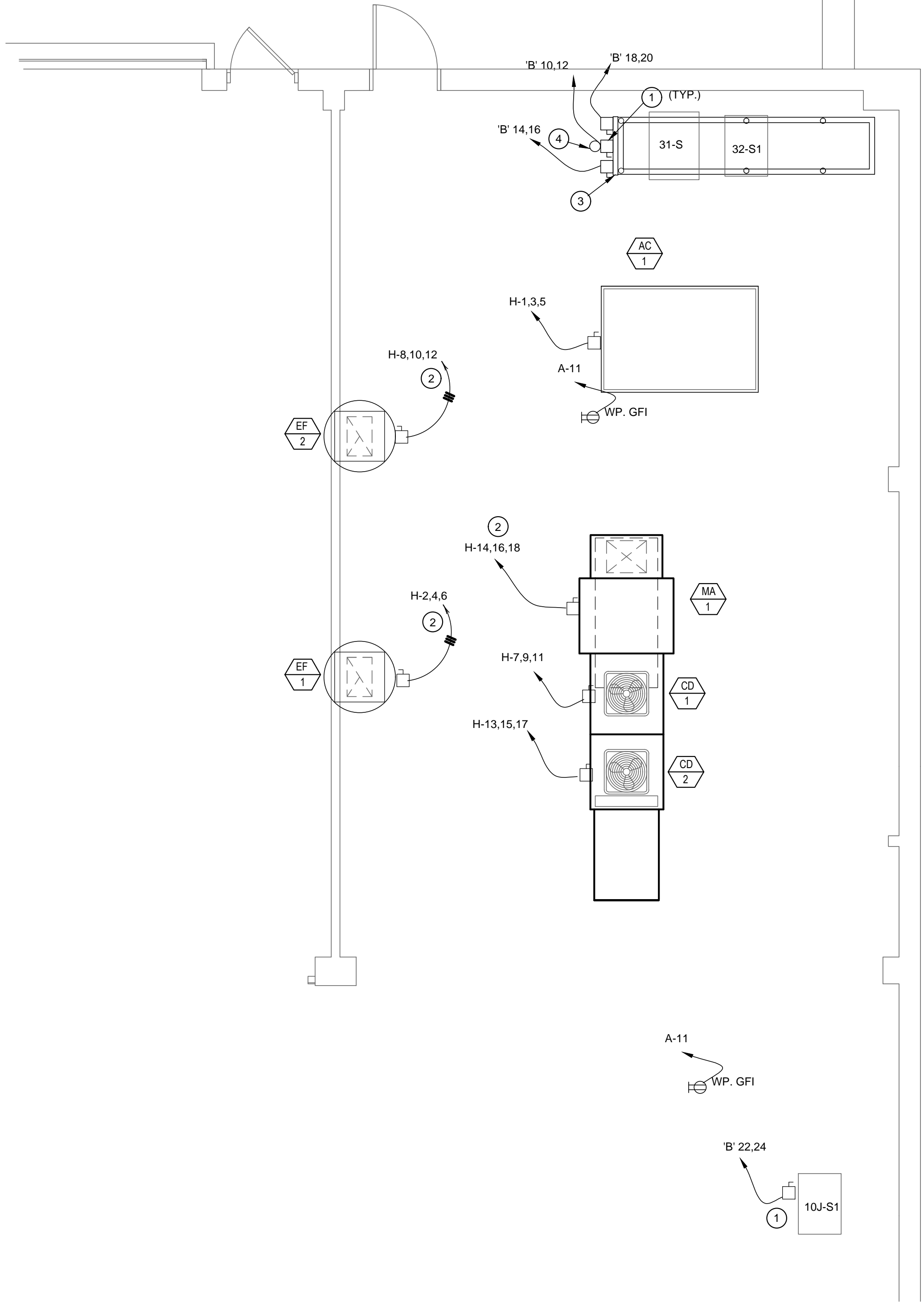
HVAC EQUIPMENT SCHEDULE		4
	NOT TO SCALE	E-104

- ALL ROOF MOUNTED EQUIPMENT SHALL BE IN NEMA-3R ENCLOSURES.
- ALL CONDUIT RUNS SHOWN ON THE ROOF SHALL BE RUN BELOW THE CEILING SPACE WHERE AMBIENT TEMPERATURE WILL BE BELOW 30° C. FINAL CONNECTIONS TO THE ROOF EQUIPMENT IS LIMITED TO 5'-0" OF DIRECT SOLAR EXPOSURE.
- NOT USED.
- VERIFY ALL FUSE SIZES AND TYPES WITH THE AIR CONDITIONING EQUIPMENT MANUFACTURER PRIOR TO INSTALLATION.
- REVIEW THE MECHANICAL PLANS FOR THE AIR CONDITIONING CONTROL REQUIREMENTS AND SCOPE OF WORK PRIOR TO BIDDING AND INCLUDE ALL COSTS IN BID.
- VERIFY CONNECTION POINTS OF ALL HVAC EQUIPMENT PRIOR TO INSTALLATION. PROVIDE CONTROL VOLTAGE CONNECTION TO DUCT MTD. SMOKE DETECTOR AS REQUIRED BY MECHANICAL DRAWING M-100.
- SEE MECHANICAL DRAWINGS FOR EXACT LOCATIONS OF MECHANICAL EQUIPMENT AND THERMOSTATS. PROVIDE RACEWAY SYSTEM FOR ALL CONTROL WIRING AS REQUIRED BY MECHANICAL DRAWING M-100.
- G.C. COORDINATE ELECTRICAL, MECHANICAL, FIRE ALARM (IF REQUIRED) FOR INTERLOCK SEQUENCE.
- RESTROOM EXHAUST FAN TO BE POWERED FROM BACK OF HOUSE LIGHTING CIRCUIT AND CONTROLLED VIA 2-POLE SWITCHES IN EACH BACK OF HOUSE. SEE DETAIL 5/E400 FOR ADDITIONAL INFORMATION.
- PROVIDE ELECTRICAL STUB AND GFCI OUTLET ON HINGED SIDE OF EXHAUST FAN. COORDINATE WITH MECHANICAL CONTRACTOR.

ROOF PLAN GENERAL NOTES		2
	NOT TO SCALE	E-104

- REFER TO CONDENSING UNIT WIRING DIAGRAM, SHEET 7 / E-400.
- ROUTE CIRCUITRY THROUGH HOOD CONTROL PANEL 'M4'. REFER TO DETAIL, SHEET 3 / E-401.
- STRUT RACK SUPPORT FOR EQUIPMENT DISCONNECT SWITCHES. REFER TO DETAIL, SHEET 2 / E-401.
- MOUNT PHOTOCELL AS DETAILED ON SHEET 11-E400 ON CONDENSER RACK.

ROOF PLAN KEYED NOTES		3
	NOT TO SCALE	E-104



ROOF POWER PLAN		1
	1/4" = 1'-0"	E-104



PANDA RESTAURANT GROUP INC.  
1683 Walnut Grove Ave.  
Rosemead, California  
91770  
Telephone: 626.799.9898  
Facsimile: 626.372.8288

All ideas, designs, arrangement and plans indicated, or represented by this drawing are the property of Panda Express Inc. and were created for use on this specific project. None of these ideas, designs, arrangements or plans may be used by or disclosed to any person, firm, or corporation without the written permission of Panda Express Inc.

REVISIONS:	

ISSUE DATE:	
1	100% SUBMITTAL

CHECKED BY:  
DRAWN BY: STAFF

PANDA PROJECT #: B1-17-D5167  
ARCH PROJECT #:



don penn ■ consulting engineer  
1301 SOLANA BLVD., BLDG. 1,  
SUITE 1420  
WESTLAKE, TEXAS 76262  
Phone: 817-410-2858  
Fax: 817-251-8411

Professional Certification

I hereby certify that these documents were prepared or approved by me, and that I am a duly licensed professional engineer under the laws of the State of Maryland. License number 22242, Expiration Date: 02/03/19

PANDA EXPRESS

NAS PAX RIVER  
PAX RIVER NAVY BASE  
PATUXENT RIVER, MD

E-104

ROOF POWER PLAN

CONSTRUCTION SET - 2017/07/30