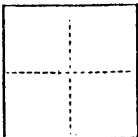


CORNER RECORD

CR 318

COUNTY OF Alameda T. 1 S. R. 3 W. M.D.B. & M. MERIDIAN CALIFORNIA

CORNER TYPE: GOV'T. CORNER ☐ MEANDER ☐ RANCHO ☐ CONTROL ☐ OTHER ☒
CORNER IDENTIFICATION — DATE OF VISIT OCTOBER 19 93



Subdivision Lot corners for:
LOT 35
TRACT 2379
BOOK 48, PAGE 45

CORNER — LEFT AS FOUND ☐ FOUND AND TAGGED ☐ REESTABLISHED OBLITERATED CORNER ☐ REBUILT ☐

PHYSICAL DESCRIPTION OF CORNER FOUND; EVIDENCE AND METHOD USED TO IDENTIFY OR REESTABLISH

Reestablished from record data and found monuments as shown on the above named map. See sketch below for physical description of monuments found and set.

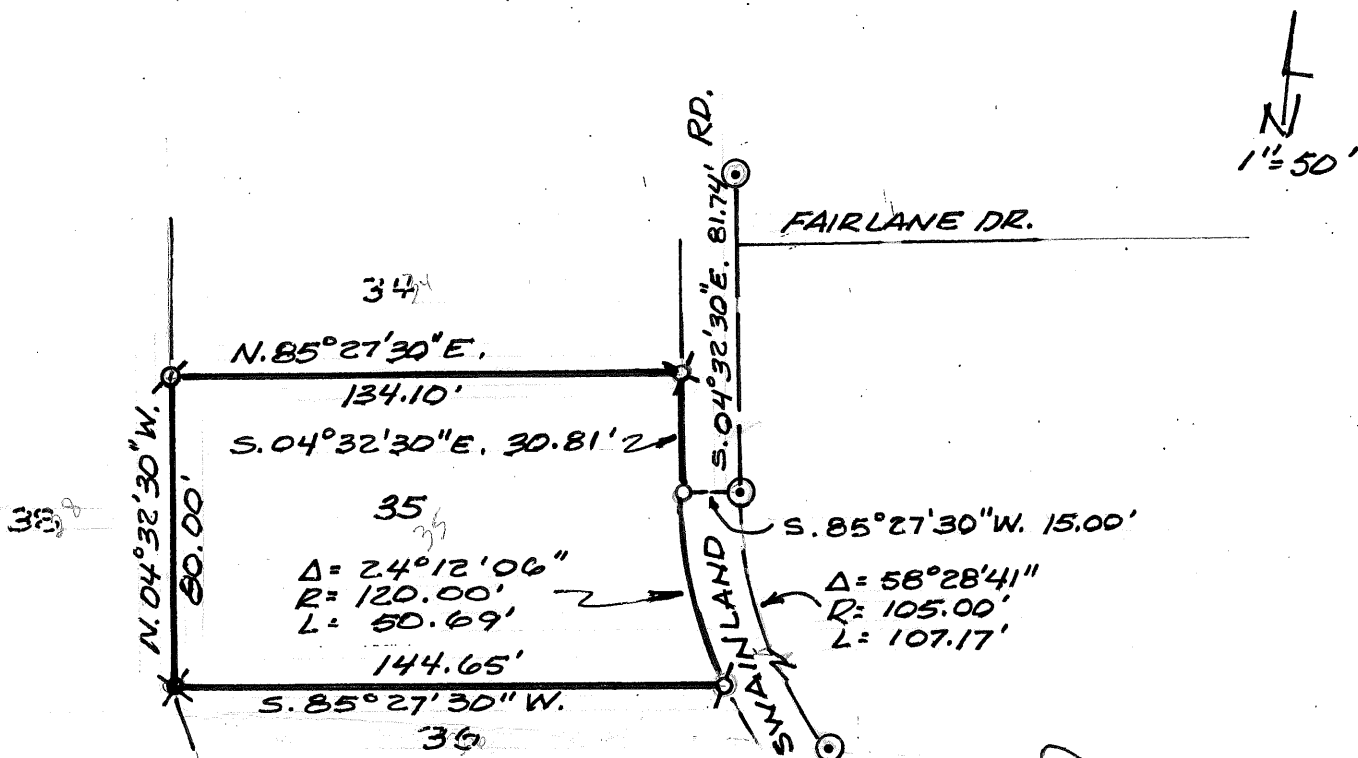
PHYSICAL DESCRIPTION OF MONUMENTS REBUILT OR PERPETUATED

- FOUND CITY OF OAKLAND MONUMENT
- X FOUND 1-1/2" IRON PIPE (NOT OF RECORD)
- X SET CONC. NAIL AND TAG R.C.E. 26930 IN WALK
- SET 5/8" REBAR AND CAP R.C.E. 26930
- DIMENSION POINT

CALIFORNIA COORDINATE SYSTEM ORDER: FIRST ☐ SECOND ☐ THIRD ☐
STATIONS USED: NGS (USC & GS) ☐ N COUNTY ☐ A STATION ☐ STATION ☐
ZONE ☐ ELEVATION ☐ NORTHINGS (Y) ☐ EASTINGS (X) ☐

(Fold)

SKETCH: (Include reference tie or witness points, remarks and topo of area)



SURVEYOR'S CERTIFICATE
THIS CORNER RECORD WAS RECEIVED BY ME OR UNDER MY
DIRECTION IN CONFORMANCE WITH THE LAND SURVEYORS ACT
ON 11/4 19 93
SIGNED: [Signature]
L.S. C.E. No. RCE26930
Exp. 3/31/97
CIVIL
STATE OF CALIFORNIA

COUNTY SURVEYOR'S CERTIFICATE
THE CORNER RECORD WAS RECEIVED October 20 19 93
AND EXAMINED AND FILED 11/13 19 93
BY REID DENLAND
TITLE: 93-69
EXP. 12/31/95
DEPUTY COUNTY SURVYR.

STATEMENT ON BACK OF SHEET

YES ☐ NO ☒