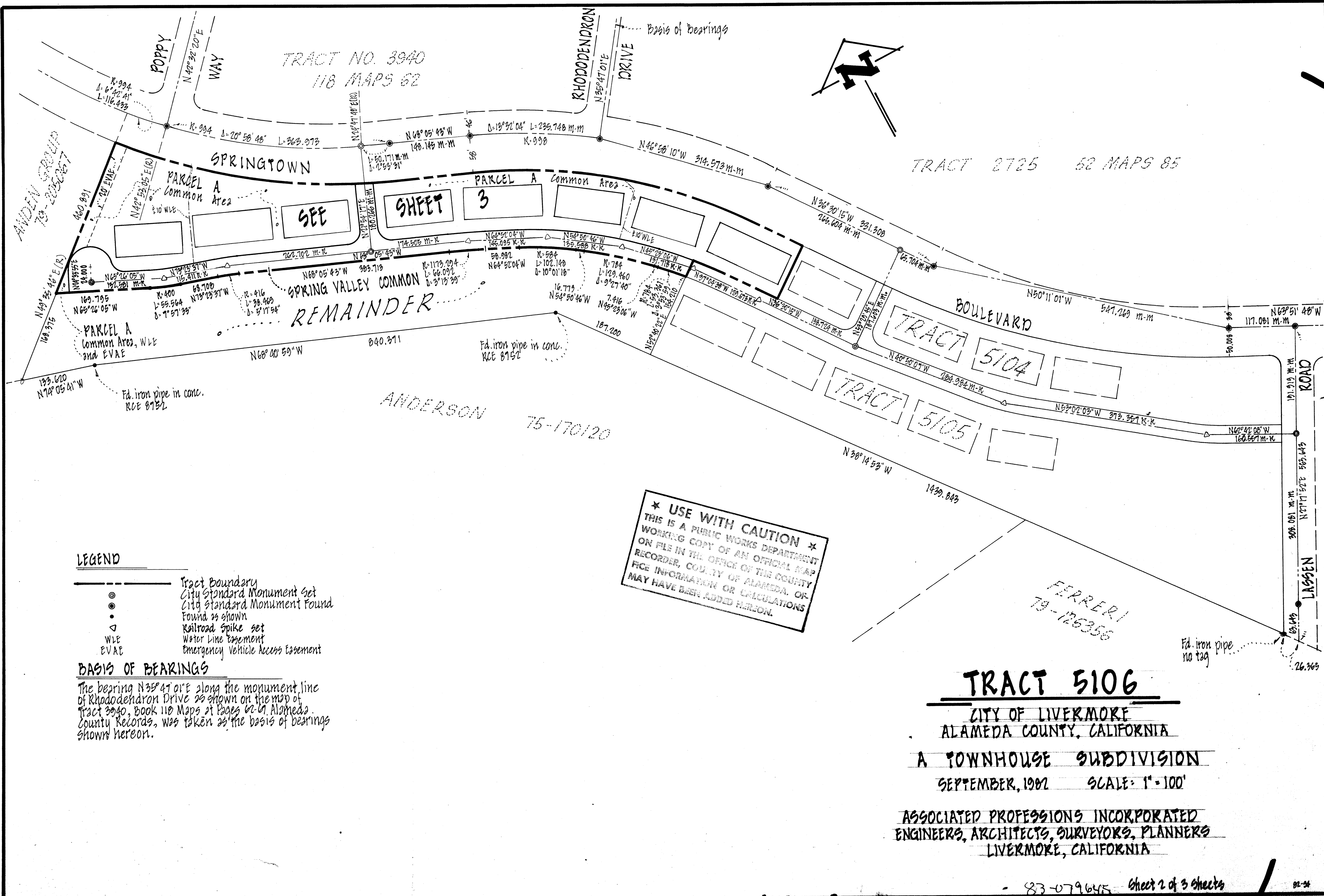


12/61/39/21

TR 5106

139



LEGEND

- Tract Boundary
- City Standard Monument Set
- City Standard Monument Found
- Found as shown
- Railroad Spike set
- Water Line Easement
- Emergency Vehicle Access Easement
- WLE
- EVAE

BASIS OF BEARINGS

The bearing N35°41'01"E along the monument line of Rhododendron Drive as shown on the map of Tract 3940, Book 118 Maps 62-67, Alameda County Records, was taken as the basis of bearings shown hereon.

★ USE WITH CAUTION ★
THIS IS A PUBLIC WORKS DEPARTMENT
WORKING COPY OF AN OFFICIAL MAP
ON FILE IN THE OFFICE OF THE COUNTY
RECORDER, COUNTY OF ALAMEDA. OF
FICE INFORMATION OR CALCULATIONS
MAY HAVE BEEN ADDED HEREON.

TRACT 5106
CITY OF LIVERMORE
ALAMEDA COUNTY, CALIFORNIA
A TOWNHOUSE SUBDIVISION
SEPTEMBER, 1982 SCALE: 1"=100'
ASSOCIATED PROFESSIONS INCORPORATED
ENGINEERS, ARCHITECTS, SURVEYORS, PLANNERS
LIVERMORE, CALIFORNIA

filed 5-11-83

139/21